



# Retiring Times

MONTGOMERY COUNTY PUBLIC SCHOOLS Maryland

Volume 17 Number 1 SPRING

2020

■ Montgomery County Public Schools ■ Rockville, Maryland ■

## Remember: Spring Issues of *Retiring Times* ARE ONLINE ONLY

### THE SPRING ISSUE OF *RETIRING TIMES*

is available online only. It is no longer printed or mailed.

**The fall issue, which contains Open Enrollment information, is still printed and mailed. ■**

### IN THIS ISSUE

- 1 Spring Issues of *Retiring Times* Now Online Only
- 1 Wellness Initiatives: Reduce Your Share of Health Insurance Costs in 2020
- 2 Can We Help?
- 2 Wellness Initiatives: The Fine Print
- 2 Be Alert for Scammers Using ERSC's Phone Number as Caller ID
- 3 Eligible for Medicare? What You Need to Know
- 3 Keep Your Personal Information Up to Date
- 3 Submit Benefit Changes by the Fifth of the Month
- 4 Disability, Medicare, and Your MCPS Retiree Benefits
- 4 MCPS Retirees Association Needs You!

## WELLNESS INITIATIVES: Reduce Your Share of Health Insurance Costs in 2021

Are you a Montgomery County Public Schools (MCPS) retiree who is covered by an MCPS-provided medical insurance plan through CareFirst or Kaiser Permanente? Are you not yet eligible for Medicare? Or, are you eligible for Medicare but your covered spouse is not? If you answered yes to two of these questions, keep reading to be sure you are familiar with the Wellness Initiatives program and the steps you need to take to benefit from it.

Wellness Initiatives is designed to keep you informed about your health and help you reduce your share of health insurance premiums. The primary components of the program are a **biometric health screening**, a **health risk assessment**, and a **smoker (tobacco-user) surcharge**.

MCPS will pay an additional 1 percent of the total cost of your

health insurance (medical, prescription, dental, and vision plans) in 2021—reducing your contribution by 1 percent—if, as a retiree, you complete a biometric health screening of your blood pressure, blood sugar, body mass index (BMI), and cholesterol by October 2, 2020. If you complete your medical insurance plan's online health risk assessment by the same deadline, you will save an additional 1 percent.

You may complete your screening either by having a physical with your primary care physician or by attending a Well Aware health screening. Screenings are held throughout the year. Learn more at [www.montgomeryschoolsmd.org/departments/ersc/biometric-health-screenings-schedule.aspx](http://www.montgomeryschoolsmd.org/departments/ersc/biometric-health-screenings-schedule.aspx).

If you and/or your spouse use tobacco products, you will save even

more by quitting. That's because MCPS imposes a 3 percent surcharge on the total health insurance cost of retirees who are covered by an MCPS-provided medical plan if either they OR their covered spouses are not yet eligible for Medicare AND smoke or use other forms of tobacco.

If you are affected and wish to avoid the surcharge, you and your covered spouse need to be tobacco free for 12 consecutive months prior to January 1 each year. Then, during Retiree Benefits Open Enrollment each fall, you must attest online to whether or not you and/or your spouse will be tobacco free throughout the current year. If you do not attest, your contributions to your

continued on page 2

## WELLNESS INITIATIVES

continued from page 1

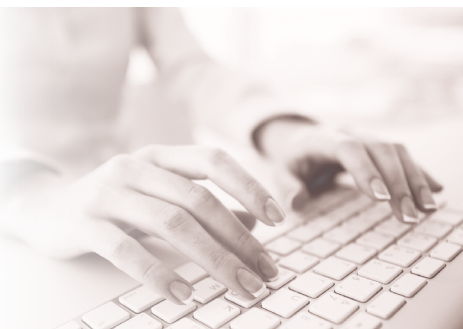
health insurance (medical, prescription, dental, and vision plans) will include a 3 percent surcharge on the total cost of the insurance.

Once you and your spouse have been tobacco free for any 12 consecutive months, you may re-attest online to have the surcharge removed within two months. To help you quit, you may wish to attend a smoking-cessation class such as Quit for Good. Visit [www.montgomeryschoolsmd.org/staff/wellness/smoking-cessation/](http://www.montgomeryschoolsmd.org/staff/wellness/smoking-cessation/) for details.

For more information about the Wellness Initiatives program, visit the Wellness Initiatives for Retirees web page at [www.montgomeryschoolsmd.org/departments/ersc/retirees/benefits/wellness-initiatives.aspx](http://www.montgomeryschoolsmd.org/departments/ersc/retirees/benefits/wellness-initiatives.aspx). There you will find helpful links to frequently asked questions and dates, times, and locations of Well Aware's biometric health screenings. ■

## Can We HELP?

ERSC endeavors to keep you informed about your benefits. Our retiree website makes it easy for you to find everything you need. Visit it at [www.montgomeryschoolsmd.org/departments/ersc/retirees](http://www.montgomeryschoolsmd.org/departments/ersc/retirees).



### STILL HAVE QUESTIONS?

**We are here to help!** Call ERSC at 301-517-8100, Monday–Friday, 8:00 a.m.–4:15 p.m., or email [ERSC@mcpsmd.org](mailto:ERSC@mcpsmd.org). ■

## WELLNESS INITIATIVES: The Fine Print

- **The biometric health screening and health risk assessment** are available only to MCPS retirees who are not yet eligible for Medicare and are covered by an MCPS-provided medical insurance plan.
- **The tobacco-user surcharge** applies to retirees who are covered by an MCPS-provided medical plan and their covered spouses, if either or both of them are non-Medicare-eligible. The surcharge will not exceed 3 percent of the total cost of a retiree's health insurance, even if both the retiree and spouse use tobacco.
- **If you retire after completing your screening and assessment for 2021 while still an employee, you will need to complete them again as a retiree by October 2, 2020, to receive the rate reductions in 2021.**
- **Spouses of MCPS retirees** are NOT required to complete a biometric health screening or health risk assessment in order for the retiree to receive the rate reductions. A spouse may choose to complete a screening to learn more about his or her health, but doing so will not impact the retiree's contribution to his or her health plan costs.
- **The steps for completing** a biometric health screening and health risk assessment may vary depending on your medical plan. For plan-specific information and instructions, visit the Wellness Initiatives for Retirees website at [www.montgomeryschoolsmd.org/departments/ersc/retirees/benefits/wellness-initiatives.aspx](http://www.montgomeryschoolsmd.org/departments/ersc/retirees/benefits/wellness-initiatives.aspx).
- **If you are covered** by an MCPS-provided prescription, dental, and/or vision plan, but do not carry medical insurance through MCPS, you will not be able to complete a biometric health screening or health risk assessment and will NOT be eligible for either of the 1 percent reductions. ■

## BE ALERT FOR SCAMMERS

### Using ERSC's Phone Number as Caller ID

A number of MCPS retirees recently have received telephone calls that appeared to be coming from the Employee and Retiree Service Center (ERSC), but were actually scam calls. This practice is known as caller ID impersonation or caller ID spoofing. Scammers use the name and/or telephone number of an organization or business they believe the call recipient trusts, in an attempt to obtain personal or financial information. The calls also may appear to come from government agencies, local police departments, or companies the person answering the phone has recently done business with.

Unfortunately, we can no longer rely on caller ID to verify who is calling. If you receive an unexpected call that appears to be from ERSC or any other MCPS office or school, hang up and call us yourself to verify whether or not MCPS actually called you. As always, never provide or confirm personal or financial information to anyone whose call you were not expecting. ■

## ELIGIBLE FOR MEDICARE? What You Need to Know

After you retire, and as soon as you become eligible for it, Medicare will become an important part of your Montgomery County Public Schools (MCPS)-sponsored retiree medical and prescription plans. It will serve as your primary medical coverage and your MCPS retiree medical plan will be your secondary medical coverage. If you are enrolled in the Caremark prescription plan prior to Medicare, SilverScript (a Medicare Part D prescription plan) will become your new MCPS-sponsored prescription plan.

You become eligible for Medicare when you turn 65 years old, if you begin receiving disability benefits from the Social Security Administration (SSA) and are beginning the 25th month of entitlement, or have certain medical conditions that qualify you for Medicare. MCPS requires all participants enrolled in the MCPS Retiree Benefit Plan to begin the enrollment process for Medicare Parts A and B well in advance of their eligibility date, in order to maintain medical and prescription benefits through MCPS. Once eligible, you or your spouse (or other covered dependent) must enroll in Medicare Parts A and B.

To enroll in Medicare Parts A and B, you must contact the SSA three months before you become eligible for Medicare. It is the retiree and/or dependent's responsibility to enroll in Medicare Parts A and B and submit a copy of the Medicare card to the Employee and Retiree Service Center (ERSC) 60 days prior to the effective date of Medicare coverage. You do not enroll in the SilverScript Part D prescription plan through the SSA; MCPS processes your Part D enrollment directly through SilverScript.

Once Medicare becomes your primary medical coverage, your MCPS-sponsored medical plan monthly premium will be reduced to reflect its status as secondary coverage. For the monthly costs of the different plans, please refer to the rate charts in the Retiree Benefit Rate Schedules online at [www.montgomeryschoolsmd.org/uploadedFiles/retiree\\_benefit\\_rate\\_schedules\\_current.pdf](http://www.montgomeryschoolsmd.org/uploadedFiles/retiree_benefit_rate_schedules_current.pdf).

Should you and/or your covered dependent(s) become eligible for Medicare through social security disability benefits or a qualifying medical condition, be sure to notify the ERSC Medicare specialist of the early eligibility. You may reach the

### You are eligible for Medicare if you—

- are age 65 (or over if you have been employed and covered by an active group health plan),
- receive disability benefits from the Social Security Administration and are beginning the 25th month of entitlement, or
- have certain medical conditions that qualify you for Medicare..

specialist by telephone at 301-517-8100. Remember, you must submit a copy of your Medicare card to ERSC 60 days prior to the effective date of Medicare coverage.

For information regarding Medicare enrollment, contact the SSA at 1-800-772-1213 or visit [www.ssa.gov/](http://www.ssa.gov/). For information regarding Medicare costs and benefits, contact Medicare at 1-800-633-4227 or visit <https://www.medicare.gov>. Additional information about Medicare enrollment and your MCPS retiree health benefits can be found in the Retiree Benefit Summary at [www.montgomeryschoolsmd.org/uploadedFiles/retiree\\_benefit\\_summary\\_current.pdf](http://www.montgomeryschoolsmd.org/uploadedFiles/retiree_benefit_summary_current.pdf). ■

## KEEP YOUR Personal Information UP TO DATE

### Have you moved recently or are you planning a move?

Make sure to update your address with the Employee and Retiree Service Center (ERSC) by submitting MCPS Form 445-1B, *Change in Personal Information for MCPS Retirees and Former Employees*. This will ensure that you receive important retiree information, such as details regarding fall Open Enrollment. ■

## DID YOU KNOW? Submit Your Benefit Changes by the fifth of the month for them to take effect on the first of the following month.

Occasionally, you may experience a life event that enables you to make changes to your benefits outside of the annual Open Enrollment period. For example, if you divorce, you may remove your former spouse from your plan and reduce your healthcare premiums without waiting for Open Enrollment. You must submit your change to the Employee and Retiree Service Center (ERSC) by the fifth of the month in order for your change to take effect on the first of the following month.

Learn more at [www.montgomeryschoolsmd.org/departments/ersc/retirees/](http://www.montgomeryschoolsmd.org/departments/ersc/retirees/). Click the **Life events tab** in the blue navigation bar. ■

## Disability, Medicare, and YOUR MCPS RETIREE BENEFITS

If you, your spouse, or other covered dependent has received disability benefits from the Social Security Administration (SSA) for 24 months, regardless of age, then you are eligible for Medicare Parts A and B. As a requirement for continuing to carry Montgomery County Public Schools (MCPS) health benefits, any person eligible for Medicare Parts A and B must enroll in **both** parts—A and B—when first eligible, or the person will lose his or her MCPS coverage.

Medicare Parts A and B are effective on the first day of the 25th month of your social security disability benefits entitlement. About three months before the Medicare-effective date, the SSA automatically will enroll you in Medicare Parts A and B and mail you a Medicare ID card. While Social Security gives you the option to decline Medicare Part B, **you must keep Part B if you wish to continue your MCPS benefits. Also, you must send a copy of your Medicare card with Parts A and B to the Employee and Retiree Service Center (ERSC) at least 60 days prior to the effective date of your Medicare coverage.**

The cost of your MCPS medical benefits is reduced when you enroll in Medicare Parts A and B. Medicare becomes your primary medical coverage and your MCPS plan becomes your secondary medical coverage, thus reducing the amount you must pay for your MCPS medical plan. When you become Medicare-eligible, you must notify ERSC to reduce your medical premiums.

If you or your dependents are Medicare-eligible, notify ERSC at [ERSC@mcpsmd.org](mailto:ERSC@mcpsmd.org) or 301-517-8100 and submit a copy of your Medicare card to ERSC 60 days prior to the effective date of Medicare coverage. ■

**REMEMBER: You *must* enroll in Medicare Parts A and B when you and/or your spouse or dependent are first eligible, or your MCPS medical and prescription benefits will be terminated. Remember to send a copy of your Medicare card with Parts A and B to ERSC at least 60 days prior to your Medicare-coverage effective date**

## Montgomery County Public Schools Retirees Association **NEEDS YOU!**

Have you joined the Montgomery County Public Schools Retirees Association (MCPSRA)? MCPSRA represents all Montgomery County Public Schools (MCPS) retirees—both professional and support staff—and works with the Maryland Retired School Personnel Association (MRSPA) to support its members.

The organization is looking to increase its membership!

### Interested in joining?

Visit [mcpsra.org](http://mcpsra.org) and **click on Membership** on the left side of the screen. On the next screen, **click the Application Form button.** ■



## Retiring Times

is published twice a year by Montgomery County Public Schools Employee and Retiree Service Center  
45 W. Gude Drive, Suite 1200  
Rockville, Maryland 20850

Phone: 301-517-8100  
E-mail: [ERSC@mcpsmd.org](mailto:ERSC@mcpsmd.org)

**Daniel K. Marella**  
Acting Chief Financial Officer

**Krishnanda Tallur**  
Director, Employee and Retiree Service Center

**Richard C. Johnstone**  
Director, Benefits Strategy and Vendor Relations

**Marcia J. Welch**  
Communications Specialist and Editor

1048.20 • EDITORIAL, GRAPHICS & PUBLISHING SERVICES

NP • 3/20 