

# AT Quick Guide

## Co:Writer SOLO Edition\*

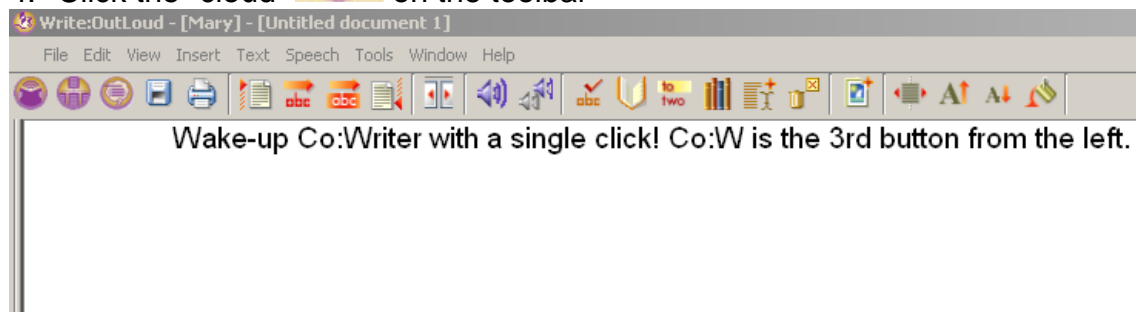


Co:Writer is a word predication program that must be used in conjunction with another program, most typically a word processing program such as Write:OutLoud or MS Word. Co:Writer is a part of the SOLO Suite which also includes Read:OutLoud, Draft:Builder, and Write:OutLoud.

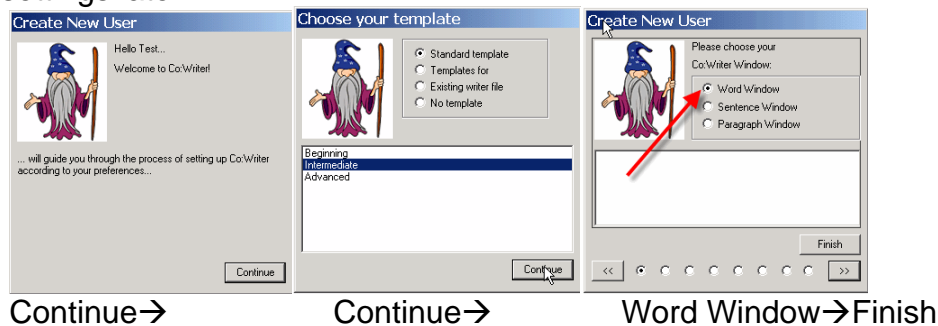
To open Co:Writer, first decide if you want to use it with Write:OutLoud, the word processor that comes with SOLO, or another program like Microsoft Word. These directions will show you how to use Co:Writer with Write:OutLoud.

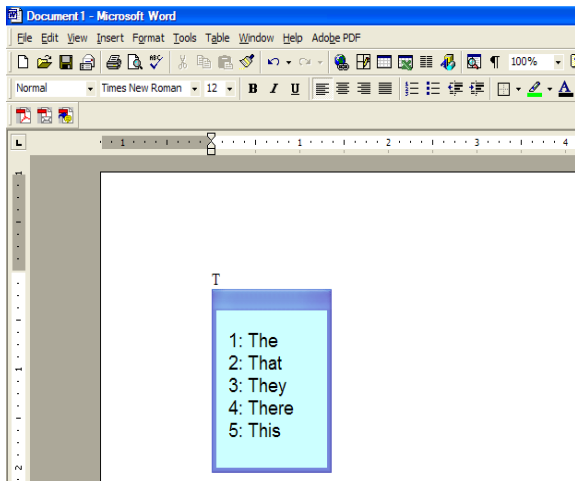
1. Open SOLO
2. Log in
3. Open Write:OutLoud

4. Click the “cloud”  on the toolbar



5. A wizard will appear to step you through the process. Rather than making choices here to set up your new writer, simply follow the instructions below. You can change your writer settings later.





6. You will see the word window ready to predict words for you. Co:Writer is now ready to be used with the default settings.

Tip: When learning how to use Co:Writer, type slowly, as if you are just learning!

Notice that as you type, the software predicts the next word that you want. When you see the word that you want, you can select it in one of three ways:

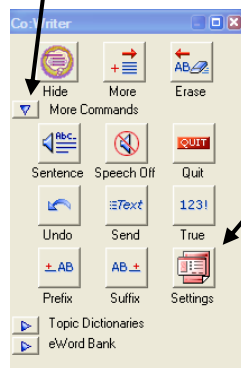
- Click the word with the mouse
- Type the number in front of the word
- Use the arrow keys to move through the selections and then the space bar when you are at your choice.

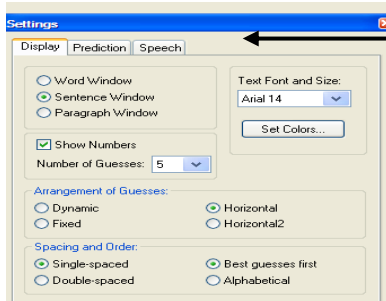
If the word you want is not in the list, simply continue typing letter by letter until it shows up. Notice that Co:Writer puts the space in for you. Once you have selected the word you want, just go ahead and start typing the next word.

Tip: If you actually want to type a number into your document, you will need to press Escape to put Co:Writer to sleep. When you want to choose words from the list again, wake Co:Writer up by clicking on the Co:Writer icon in the upper right hand corner of your screen.

### More Commands

Click on the “more commands” drop down to find the Settings button. From here, Co:Writer can be individualized for a specific student. Within Settings there will be 3 tabs; Display, Prediction, and Speech.





The three tabs in the Settings window

**Display:** This is the location to make changes on how Co:Writer is displayed, such as a word vs. sentence window, how many choices are shown at a time, if the choices are numbered and how the choices are displayed.

**Prediction:** The different options are explained as you move your mouse over the choices. Predict ahead means word will be displayed automatically. When this option is turned off then the user must type a letter to start a word before choices are offered.

**Speech:** How the voice speaks, such as speed and volume, as well as when the program speaks, after each letter, after each word or after a sentence or paragraph can be made in this area. There are only 2 voices, Aaron and Laura.

After making all of your choices click on OK. The More Commands section can be shrunk with a click on the arrow to the left so that is once again pointing to the right.



\* Co:Writer software and support information is available from Don Johnston Inc. ([www.donjohnston.com](http://www.donjohnston.com)).