

INFORMATION

Office of the Superintendent of Schools
MONTGOMERY COUNTY PUBLIC SCHOOLS
 Rockville, Maryland

January 19, 2017

MEMORANDUM

To: High School Principals

From: Janet S. Wilson, Associate Superintendent

Subject: 2016 Advanced Placement and International Baccalaureate Exam Participation and Performance for Students in Montgomery County Public Schools and Public School Students in the State of Maryland and the Nation

Advanced Placement Exam in MCPS, Maryland, and the Nation

Montgomery County Public Schools (MCPS) has continued to emphasize rigorous course-taking resulting in 34,760 Advanced Placement (AP) exams taken by MCPS students in 2016 (Table 1). The percentage of AP exams taken by MCPS students who attained scores of 3 or higher (74.1 percent) was 12.0 and 18.1 percentage points higher than those for public school students in the state of Maryland (62.1 percent) and the nation (56.0 percent), respectively. The number of AP exams taken by MCPS students in 2016 accounted for 32.1 percent of all those taken by Maryland public school students, and the number of AP exams with scores of 3 or higher taken by MCPS students accounted for 38.3 percent of all those in Maryland.

Table 1. 2016 Advanced Placement Exam Participation and Performance for Public School Students in MCPS, the State of Maryland, and the Nation by Race/Ethnicity

	MCPS			Maryland ^a			Nation ^a		
	N AP Exams Taken	N AP Exams 3 or Higher	% AP Exams 3 or Higher	N AP Exams Taken	N AP Exams 3 or Higher	% AP Exams 3 or Higher	N AP Exams Taken	N AP Exams 3 or Higher	% AP Exams 3 or Higher
All	34,760	25,742	74.1	108,392	67,277	62.1	4,018,016	2,250,668	56.0
AS	8,718	6,905	79.2	17,381	12,932	74.4	572,139	392,843	68.7
BL	4,102	2,056	50.1	16,211	5,541	34.2	268,799	75,471	28.1
HI	4,296	2,577	60.0	10,559	5,664	53.6	889,130	365,097	41.1
WH	15,825	12,755	80.6	56,688	38,654	68.2	2,048,363	1,288,609	62.9
MU	1,777	1,423	80.1	5,575	3,408	61.1	167,347	94,973	48.2

Note. AP = Advanced Placement; AS = Asian; BL = Black or African American; HI = Hispanic/Latino; WH = White; MU = Two or More Races. Results for MCPS American Indian or Alaskan Native and Native Hawaiian or Other Pacific Islander students are included with all students but are not reported separately. AP exam results are based on data reported by the College Board as of September 2016.

^a“All Students” includes those who identified themselves as American Indian or students who did not report their race/ethnicity. AP exam results for Maryland and the nation are based on May 2016 exam data reported by the College Board.

MCPS students of all races/ethnicities exceeded the percentage of AP exams with scores of 3 or higher compared with their peers in the state and the nation. Particularly noteworthy was the

percentage of AP exams taken by MCPS Black or African American students receiving scores of 3 or higher (50.1 percent), which was 15.9 and 22.0 percentage points higher than those in the state (34.2 percent) and the nation (28.1 percent), respectively (Table 1). Overall, the number of AP exams taken by MCPS Black or African American students and those exams with scores of 3 or higher accounted for 25.3 and 37.1 percent of all such exams taken by their peers in Maryland, respectively. Similarly, the percentage of AP exams taken by MCPS Hispanic/Latino students receiving scores of 3 or higher (60.0 percent) was 6.4 and 18.9 percentage points higher than the public school students in the state of Maryland (53.6 percent) and the nation (41.1 percent), respectively. The number of AP exams taken by MCPS Hispanic/Latino students and those tests with scores of 3 or higher accounted for 40.7 and 45.5 percent of all such exams taken by their counterpart in Maryland, respectively.

Four-Year Trend of Advanced Placement Exam in MCPS, Maryland, and the Nation

From 2013 to 2016, the number of AP exams taken by MCPS students increased 1,118 tests, (Table A1). The similar increasing trend was observed in Maryland and the nation. The percentage of AP exams taken by public school students in MCPS, Maryland, and the nation with scores 3 or higher remained steady (Figure 1).

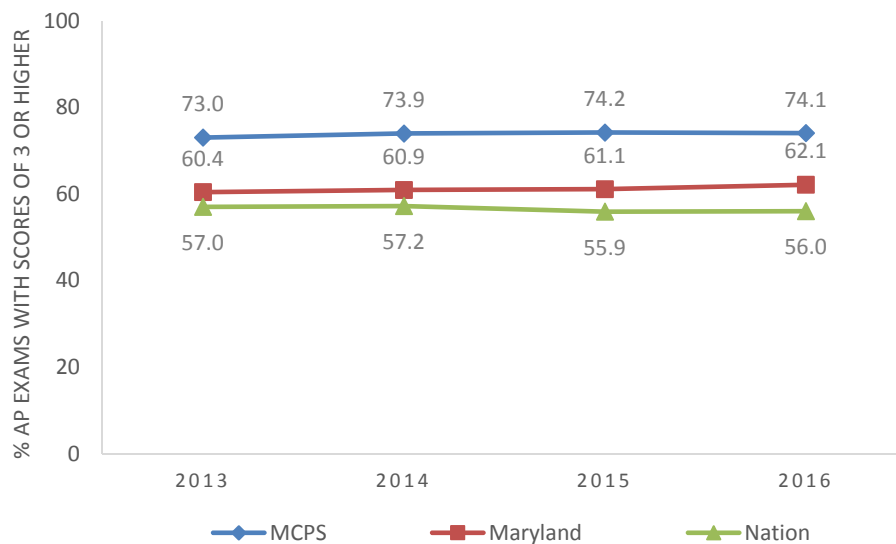


Figure 1. Percentage of Advanced Placement Exam Scores of 3 or Higher for public school students in MCPS, Maryland, and the nation from 2013 to 2016.

Between 2013 and 2016, an upward trend was observed for the number of AP exams and the percentage of exam with scores of 3 or higher by MCPS students of all racial/ethnic groups (See Table A1 and Figure 2). However, the AP exam results varied by groups in the state of Maryland, and the nation. It is worth noting the continuing improvement of AP exam participation and performance by MCPS Black or African American and Hispanic/Latino students. In the four-year span, the number of AP exams taken by MCPS Black or African American students increased 805 tests (See Table A1). The AP exam participation for their peers in the nation increased but there was a decrease in the number of exams taken by Black or African American students in the nation. The percentage of AP exams taken by Black or African American students in MCPS and Maryland

with scores of 3 or higher increased 3.1 percentage points each from 2013 to 2016 but the AP exam performance for the nation remained steady (Figure 2). In the last four years, the number of AP exams taken by MCPS Hispanic/Latino students increased very slightly (43 tests) but the percentage of exams with scores of 3 or higher improved 4.0 percentage points. The same trend held true for Hispanic/Latino students in Maryland and the nation but the increase of AP exam performance for the national Hispanic/Latino was slim to none.

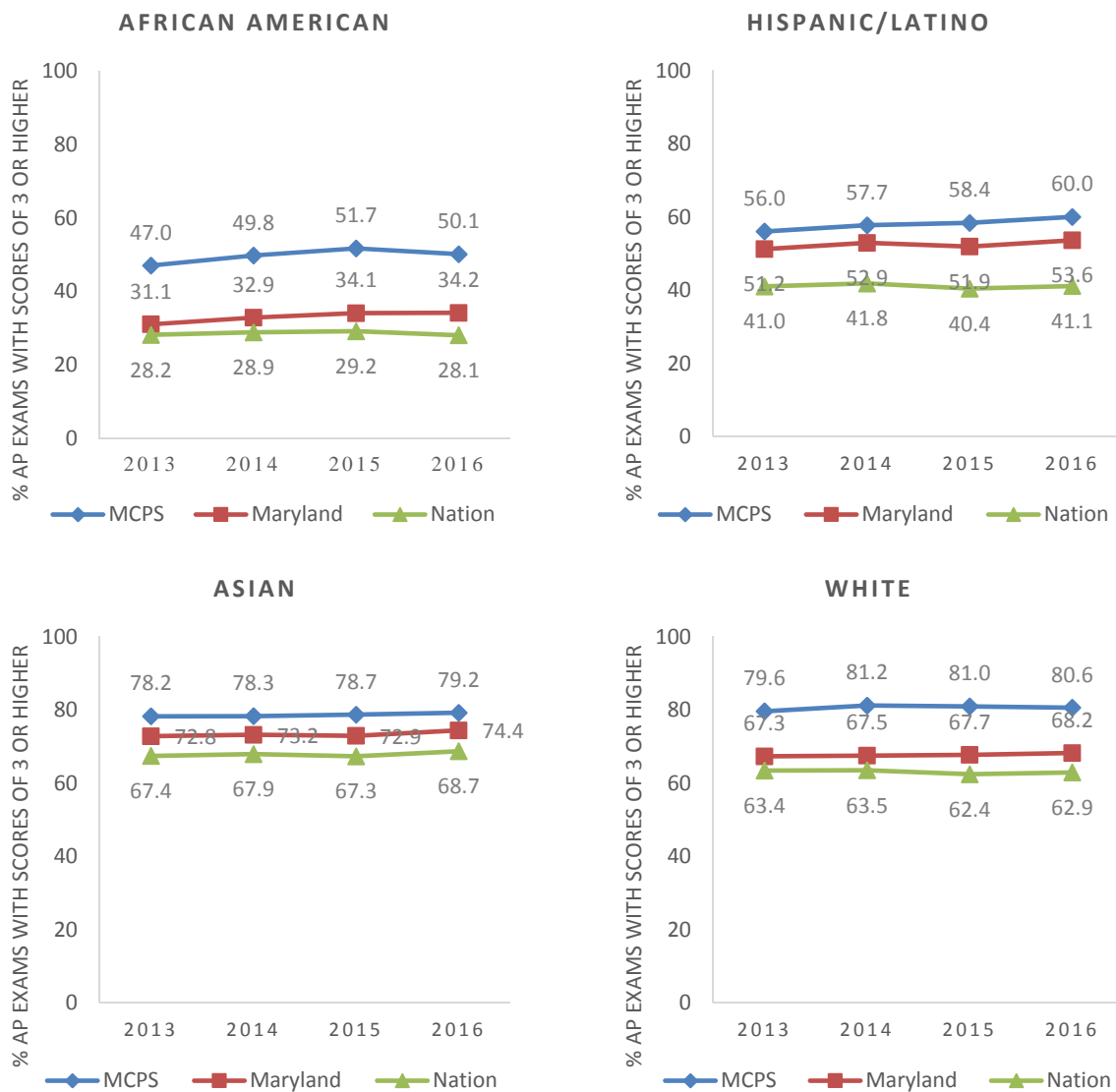


Figure 2. Percentage of Advanced Placement Exam Scores of 3 or Higher for public school students in MCPS, Maryland, and the nation by Race/Ethnicity from 2012 to 2016.

Advanced Placement Exam among MCPS High Schools

MCPS high schools continued to support AP exam participation and performance of minority students. Between 2015 and 2016, 17 and 14 of the 25 high schools observed an increase in the number of AP exams taken by Black or African American students and Hispanic/Latino students, respectively (Tables A2a and A2b). Ten and fourteen of the 25 high schools had an increase in

the percentage of AP exams taken by Black or African American students and Hispanic/Latino students who earned scores of 3 or higher, respectively. Six of the 25 high schools noted increases for both AP exam participation and performance for Black or African American students; of those, Richard Montgomery High School demonstrated the greatest improvement (10.7 percentage points) in these students earning AP exam scores of 3 or higher. Eight of the 25 high schools showed increases for both AP exam participation and performance for Hispanic/Latino students; out of the 8 schools, Wheaton High School recorded the largest increase (11.5 percentage points) in these students attaining AP exam scores of 3 or higher.

In 2016, in the order of popularity, the 20 AP exams most frequently taken by students in MCPS were: U.S. Government and Politics, English Language and Composition, Psychology, World History, English Literature and Composition, U.S. History, Calculus AB, Statistics, Calculus BC, Environmental Science, Biology, Spanish Language, Chemistry, Human Geography, Computer Science A, Physics C: Mechanics, Microeconomics, Macroeconomics, Physics 1, and Comparative Government and Politics (Table B1).

Noteworthy gains were realized in both the number of exams taken and the percentage of AP exam scores of 3 or higher in English Literature and Composition, Calculus BC, Statistics, Environmental Science, Comparative Government and Politics, U.S. Government and Politics, World History, and Computer Science A for students overall and for at least three racial/ethnic groups from 2015 to 2016 (Table B2). There was an increase in the number of exams taken and the percentage of AP exam scores of 3 or higher in English Language and Composition, Statistics, Environmental Science, Comparative Government and Politics, U.S. Government and Politics, World History, and Computer Science A for Black or African American students. An increase was evident for Hispanic/Latino students in the number of exams taken and the percentage of AP exam scores of 3 or higher in English Language and Composition, Environmental Science, Microeconomics, U.S. Government and Politics, U.S. History, World History, and Spanish Language.

Two-Year Trend of International Baccalaureate Exam in MCPS

Besides Advanced Placement courses, MCPS provides International Baccalaureate (IB) programs in eight high schools to meet the needs of highly motivated students. The IB program exposes students to college-level materials and those who take the IB courses can choose to take the corresponding exams. IB exams with scores of 4 or higher are considered as college-ready. The number of IB exams taken by MCPS students increased from 3,066 in 2015 to 3,404 in 2016 (Table 2). The same trend was displayed among all racial/ethnic groups. IB exams taken by Hispanic/Latino students increased the most by 108 tests. The percentage of IB exams taken by MCPS students with scores of 4 or higher remained steady in the last two years. The IB performance varied by racial/ethnic groups. The IB exam taken by students who attained scores 4 or higher increased 3.4 and 2.5 percentage points for White and those self-identified as Two or More Races, respectively, while there were decreases in the rates for Asian (5.4 percentage points), Black or African American (1.1 percentage points), and Hispanic/Latino students (3.8 percentage points).

Table 2. Number of International Baccalaureate Exams Taken by MCPS Students and Percentage of International Baccalaureate Exam Scores of 4 or Higher in 2015 and 2016 by Race/Ethnicity

	N IB Exam Taken		% IB Exams 4 or Higher	
	2015	2016	2015	2016
All Students	3,066	3,404	77.2	76.4
Asian	689	775	85.1	79.7
Black or African American	509	561	56.4	55.3
Hispanic/Latino	480	588	70.6	66.8
White	1,218	1,290	84.2	87.6
Two or More Races	165	190	77.0	79.5

Note. IB = International Baccalaureate. Results for MCPS American Indian or Alaskan Native and Native Hawaiian or Other Pacific Islander students are included with all students but are not reported separately. IB exam results are based on data reported by the International Baccalaureate Organization as of September 2016.

One of MCPS' academic focuses in 2016–2017 school year is to ensure students are ready for postsecondary study or the workforce. The positive trends in AP and IB exam participation and performance provide evidence of MCPS' continuing efforts to engage students in challenging and wide-ranging contents for students of all races/ethnicities. The attached tables include additional AP and IB exam information for review. Appendix A provides data on AP exam participation and performance among groups of students enrolled in MCPS schools, and public school students in Maryland and the nation. Appendix B describes the 20 most popular AP exams taken by MCPS students. Appendix C delineates information of IB exam participation and performance in MCPS.

If you have questions about AP/IB exam participation and performance data, please contact Dr. Kecia L. Addison, supervisor, Applied Research Unit, Office of Shared Accountability, at 301-279-3194 or via e-mail.

JSW:sl

Attachment

Copy to:

Executive Staff
 Dr. Addison
 Dr. Collins
 Mrs. Liu
 High School Administrative Secretaries
 Dr. Steinberg
 Mr. Koutsos
 Mr. Lloyd

Approved: _____

Henry R. Johnson Jr., Chief of Staff

Appendix A

Table A1

Number of Advanced Placement Exams Taken and Number and Percentage of Advanced Placement Exam Scores of 3 or Higher for MCPS Students, and Public School Students in Maryland and the Nation by Race/Ethnicity and Advanced Placement Exam Year

Student Group	AP Exam Year	MCPS			Maryland (Public Schools) ^a			Nation (Public Schools) ^a		
		N AP Exams Taken	N AP Exams 3 or Higher	% AP Exams 3 or Higher	N AP Exams Taken	N AP Exams 3 or Higher	% AP Exams 3 or Higher	N AP Exams Taken	N AP Exams 3 or Higher	% AP Exams 3 or Higher
All Students	2013	33,642	24,563	73.0	108,038	65,278	60.4	3,355,934	1,913,723	57.0
	2014	33,662	24,893	73.9	108,826	66,325	60.9	3,567,207	2,039,795	57.2
	2015	33,554	24,889	74.2	107,717	65,828	61.1	3,826,645	2,140,859	55.9
	2016	34,760	25,742	74.1	108,392	67,277	62.1	4,018,016	2,250,668	56.0
Asian	2013	8,687	6,796	78.2	17,127	12,462	72.8	507,461	341,836	67.4
	2014	8,823	6,906	78.3	17,203	12,585	73.2	539,404	366,467	67.9
	2015	8,612	6,777	78.7	17,751	12,937	72.9	576,427	388,186	67.3
	2016	8,718	6,905	79.2	17,381	12,932	74.4	572,139	392,843	68.7
Black or African American	2013	3,297	1,551	47.0	17,583	5,461	31.1	244,017	68,896	28.2
	2014	3,578	1,781	49.8	18,238	6,000	32.9	265,801	76,947	28.9
	2015	3,777	1,953	51.7	17,462	5,954	34.1	280,126	81,840	29.2
	2016	4,102	2,056	50.1	16,211	5,541	34.2	268,799	75,471	28.1
Hispanic/Latino	2013	4,253	2,382	56.0	8,075	4,135	51.2	574,737	235,586	41.0
	2014	4,271	2,465	57.7	8,332	4,407	52.9	633,987	265,173	41.8
	2015	4,231	2,469	58.4	8,181	4,243	51.9	699,422	282,794	40.4
	2016	4,296	2,577	60.0	10,559	5,664	53.6	889,130	365,097	41.1
White	2013	15,745	12,537	79.6	59,306	39,892	67.3	1,854,735	1,176,063	63.4
	2014	15,519	12,598	81.2	59,358	40,053	67.5	1,941,886	1,233,028	63.5
	2015	15,375	12,447	81.0	57,166	38,713	67.7	2,034,550	1,270,549	62.4
	2016	15,825	12,755	80.6	56,688	38,654	68.2	2,048,363	1,288,609	62.9
Two or More Races	2013	1,606	1,257	78.3	n/a	n/a	n/a	n/a	n/a	n/a
	2014	1,419	1,115	78.6	n/a	n/a	n/a	n/a	n/a	n/a
	2015	1,517	1,216	80.2	n/a	n/a	n/a	n/a	n/a	n/a
	2016	1,777	1,423	80.1	5,575	3,408	61.1	167,347	94,973	48.2

Note. AP = Advanced Placement. Results for MCPS American Indian or Alaskan Native and Native Hawaiian or Other Pacific Islander students are included with all students but are not reported separately. AP exam results for MCPS are reported for MCPS-verified students who received scores as of September of each reporting year. Results are not available (n/a) for students of Two or More Races in Maryland and the nation from 2013 to 2015. Therefore, race/ethnicity comparison between MCPS and Maryland and the nation for those years should be interpreted with caution.

^a "All Students" includes students who identified themselves as American Indian or multiracial and students who did not report their race/ethnicity. AP exam results for Maryland and the nation are based on May 2016 exam data reported by the College Board.

Table A2a
Number of Advanced Placement Exams Taken by MCPS Students and Number and Percentage of Advanced Placement Exam Scores of 3 or Higher in 2015 and 2016 by High School and Race/Ethnicity

High School	<u>All Students</u>						<u>Asian</u>						<u>Black or African American</u>					
	N		N		%		N		N		%		N		N		%	
	AP Exams Taken		Exams 3 or Higher		Exams 3 or Higher		AP Exams Taken		Exams 3 or Higher		Exams 3 or Higher		AP Exams Taken		Exams 3 or Higher		Exams 3 or Higher	
	2015	2016	2015	2016	2015	2016	2015	2016	2015	2016	2015	2016	2015	2016	2015	2016	2015	2016
All	33,554	34,760	24,889	25,742	74.2	74.1	8,612	8,718	6,777	6,905	78.7	79.2	3,777	4,102	1,953	2,056	51.7	50.1
Bethesda-Chevy Chase	1,664	1,854	1,313	1,488	78.9	80.3	89	109	64	91	71.9	83.5	110	132	46	54	41.8	40.9
Montgomery Blair	2,106	2,114	1,851	1,843	87.9	87.2	756	655	691	613	91.4	93.6	260	306	180	193	69.2	63.1
James Hubert Blake	998	1,051	699	695	70.0	66.1	178	191	117	134	65.7	70.2	271	286	173	142	63.8	49.7
Winston Churchill	2,900	3,034	2,548	2,566	87.9	84.6	905	924	817	798	90.3	86.4	103	135	78	97	75.7	71.9
Clarksburg	1,138	1,178	767	807	67.4	68.5	409	448	309	327	75.6	73.0	168	198	82	116	48.8	58.6
Damascus	932	893	595	583	63.8	65.3	79	87	53	56	67.1	64.4	55	72	35	39	63.6	54.2
Albert Einstein	969	928	605	623	62.4	67.1	143	117	67	74	46.9	63.2	186	165	87	81	46.8	49.1
Gaithersburg	668	599	373	300	55.8	50.1	128	102	68	50	53.1	49.0	108	112	56	45	51.9	40.2
Walter Johnson	2,488	2,429	2,186	2,075	87.9	85.4	368	323	327	277	88.9	85.8	121	122	83	86	68.6	70.5
John F. Kennedy	457	379	117	143	25.6	37.7	81	59	19	24	23.5	40.7	188	125	41	36	21.8	28.8
Col. Zadok Magruder	773	807	565	536	73.1	66.4	178	224	127	156	71.3	69.6	84	77	46	36	54.8	46.8
Richard Montgomery	2,188	2,277	1,766	1,882	80.7	82.7	885	859	751	723	84.9	84.2	161	181	102	134	63.4	74.0
Northwest	1,751	1,895	1,026	1,182	58.6	62.4	579	590	359	406	62.0	68.8	245	275	107	120	43.7	43.6
Northwood	552	712	240	287	43.5	40.3	67	89	27	43	40.3	48.3	133	181	41	45	30.8	24.9
Paint Branch	996	1,006	600	627	60.2	62.3	324	289	177	188	54.6	65.1	396	433	236	250	59.6	57.7
Poolesville	1,978	1,961	1,694	1,701	85.6	86.7	785	837	707	757	90.1	90.4	72	71	54	55	75.0	77.5
Quince Orchard	2,045	2,157	1,199	1,305	58.6	60.5	382	404	254	266	66.5	65.8	171	191	54	70	31.6	36.6
Rockville	553	603	319	372	57.7	61.7	74	67	36	31	48.6	46.3	59	51	23	27	39.0	52.9
Seneca Valley	279	174	147	84	52.7	48.3	51	39	36	21	70.6	53.8	65	28	31	11	47.7	39.3
Sherwood	1,584	1,643	1,161	1,170	73.3	71.2	296	285	221	200	74.7	70.2	148	163	89	93	60.1	57.1
Springbrook	741	897	391	422	52.8	47.0	174	200	102	97	58.6	48.5	270	340	116	121	43.0	35.6
Watkins Mill	324	337	116	120	35.8	35.6	49	54	20	23	40.8	42.6	71	84	9	14	12.7	16.7
Wheaton	801	969	401	548	50.1	56.6	152	238	87	153	57.2	64.3	244	289	107	128	43.9	44.3
Walt Whitman	2,212	2,324	1,987	2,074	89.8	89.2	297	340	270	296	90.9	87.1	33	32	28	23	84.8	71.9
Thomas S. Wootton	2,457	2,534	2,223	2,308	90.5	91.1	1,183	1,188	1,071	1,101	90.5	92.7	55	53	49	40	89.1	75.5

Note. AP = Advanced Placement. Results for MCPS American Indian or Alaskan Native and Native Hawaiian or Other Pacific Islander students are included with all students but are not reported separately. AP exam results are based on data reported by the College Board as of September 2016. To comply with federal requirements, any percentage rates greater than or equal to 95.0% or less than or equal to 5.0% will be noted as ≥ 95.0 or ≤ 5.0 , respectively, and the number of AP exams and the number of exams with scores of 3 or higher will not be reported (--). Additionally, results are not reported (--) for groups with fewer than 10 AP exams. For groups of between 10 and 20 AP exams, only the percentage rate will be reported.

Table A2b
Number of Advanced Placement Exams Taken by MCPS Students and Number and Percentage of Advanced Placement Exam Scores of 3 or Higher in 2015 and 2016 by High School and Race/Ethnicity

High School	Hispanic/Latino						White						Two or More Races					
	N		N		%		N		N		%		N		N		%	
	AP Exams Taken		Exams 3 or Higher		Exams 3 or Higher		AP Exams Taken		Exams 3 or Higher		Exams 3 or Higher		AP Exams Taken		Exams 3 or Higher		Exams 3 or Higher	
	2015	2016	2015	2016	2015	2016	2015	2016	2015	2016	2015	2016	2015	2016	2015	2016	2015	2016
All	4,231	4,296	2,469	2,577	58.4	60.0	15,375	15,825	12,447	12,755	81.0	80.6	1,517	1,777	1,216	1,423	80.2	80.1
Bethesda-Chevy Chase	140	190	104	147	74.3	77.4	1,222	1,311	1,016	1,097	83.1	83.7	103	112	83	99	80.6	88.4
Montgomery Blair	177	185	137	139	77.4	75.1	797	838	738	775	92.6	92.5	114	130	103	123	90.4	94.6
James Hubert Blake	144	160	86	95	59.7	59.4	357	348	286	274	80.1	78.7	45	66	34	50	75.6	75.8
Winston Churchill	234	197	187	162	79.9	82.2	1,554	1,626	1,368	1,370	88.0	84.3	104	152	98	139	94.2	91.4
Clarksburg	177	138	97	73	54.8	52.9	338	346	246	261	72.8	75.4	46	48	33	30	71.7	62.5
Damascus	120	97	61	59	50.8	60.8	651	610	432	410	66.4	67.2	23	21	10	13	43.5	61.9
Albert Einstein	261	255	143	142	54.8	55.7	350	350	290	298	82.9	85.1	25	37	16	27	64.0	73.0
Gaithersburg	204	189	113	98	55.4	51.9	200	181	123	99	61.5	54.7	25	--	10	--	40.0	57.1
Walter Johnson	275	304	221	229	80.4	75.3	1,576	1,527	1,426	1,355	90.5	88.7	147	153	129	128	87.8	83.7
John F. Kennedy	145	155	40	56	27.6	36.1	38	33	15	24	39.5	72.7	--	--	--	--	--	--
Col. Zadok Magruder	147	145	104	91	70.7	62.8	316	318	251	221	79.4	69.5	48	40	37	29	77.1	72.5
Richard Montgomery	296	260	195	191	65.9	73.5	748	837	633	715	84.6	85.4	94	133	83	114	88.3	85.7
Northwest	209	203	91	98	43.5	48.3	628	717	409	485	65.1	67.6	87	109	59	73	67.8	67.0
Northwood	189	233	78	78	41.3	33.5	146	178	85	110	58.2	61.8	--	31	--	11	52.9	35.5
Paint Branch	94	103	52	60	55.3	58.3	144	130	111	94	77.1	72.3	37	46	24	33	64.9	71.7
Poolesville	93	119	71	95	76.3	79.8	911	805	762	682	83.6	84.7	109	126	94	111	86.2	88.1
Quince Orchard	263	277	118	133	44.9	48.0	1,152	1,199	725	780	62.9	65.1	75	85	48	56	64.0	65.9
Rockville	112	150	47	72	42.0	48.0	276	304	195	218	70.7	71.7	31	29	17	22	54.8	75.9
Seneca Valley	41	24	12	5	29.3	20.8	100	71	55	40	55.0	56.3	21	--	12	--	57.1	58.3
Sherwood	130	117	84	86	64.6	73.5	942	1,008	711	735	75.5	72.9	68	70	56	56	82.4	80.0
Springbrook	146	158	68	72	46.6	45.6	121	138	81	95	66.9	68.8	30	61	24	37	80.0	60.7
Watkins Mill	136	107	54	37	39.7	34.6	58	71	30	39	51.7	54.9	--	21	--	7	--	33.3
Wheaton	254	262	95	128	37.4	48.9	115	142	82	112	71.3	78.9	36	36	30	27	83.3	75.0
Walt Whitman	141	155	125	134	88.7	86.5	1,615	1,666	1,449	1,503	89.7	90.2	125	125	114	113	91.2	90.4
Thomas S. Wootton	103	113	86	97	83.5	85.8	1,020	1,066	928	962	91.0	90.2	93	113	88	107	94.6	94.7

Note. AP = Advanced Placement. Results for MCPS American Indian or Alaskan Native and Native Hawaiian or Other Pacific Islander students are included with all students but are not reported separately. AP exam results are based on data reported by the College Board as of September 2016. To comply with federal requirements, any percentage rates greater than or equal to 95.0% or less than or equal to 5.0% will be noted as ≥ 95.0 or ≤ 5.0 , respectively, and the number of AP exams and the number of exams with scores of 3 or higher will not be reported (--). Additionally, results are not reported (--) for groups with fewer than 10 AP exams. For groups of between 10 and 20 AP exams, only the percentage rate will be reported.

Table A3a
 Number of Students Who Took One or More Advanced Placement Exams and Number and Percentage of Test Takers Who Earned One or More Advanced Placement Exam Scores of 3 or Higher in 2015 and 2016 by High School and Race/Ethnicity

High School	All Students						Asian						Black or African American					
	N Took AP Exam		N Scored 3 or Higher		% Scored 3 or Higher		N Took AP Exam		N Scored 3 or Higher		% Scored 3 or Higher		N Took AP Exam		N Scored 3 or Higher		% Scored 3 or Higher	
	2015	2016	2015	2016	2015	2016	2015	2016	2015	2016	2015	2016	2015	2016	2015	2016	2015	2016
All	17,008	17,569	12,792	13,323	75.2	75.8	3,778	3,852	2,998	3,110	79.4	80.7	2,264	2,453	1,229	1,328	54.3	54.1
Bethesda-Chevy Chase	876	944	727	794	83.0	84.1	51	52	37	46	72.5	88.5	70	79	35	37	50.0	46.8
Montgomery Blair	891	910	792	800	88.9	87.9	239	224	220	210	92.1	93.8	139	170	100	113	71.9	66.5
James Hubert Blake	524	542	384	384	73.3	70.8	81	80	62	65	76.5	81.3	159	163	99	91	62.3	55.8
Winston Churchill	1,244	1,292	1,109	1,118	89.1	86.5	344	366	319	329	92.7	89.9	56	63	44	52	78.6	82.5
Clarksburg	621	645	430	465	69.2	72.1	215	227	160	168	74.4	74.0	102	114	57	72	55.9	63.2
Damascus	449	460	313	330	69.7	71.7	33	45	26	35	78.8	77.8	32	38	22	21	68.8	55.3
Albert Einstein	500	501	349	370	69.8	73.9	76	62	44	45	57.9	72.6	102	96	52	51	51.0	53.1
Gaithersburg	447	409	277	232	62.0	56.7	77	64	46	35	59.7	54.7	77	76	41	34	53.2	44.7
Walter Johnson	1,174	1,178	1,039	1,035	88.5	87.9	153	133	136	114	88.9	85.7	64	69	46	50	71.9	72.5
John F. Kennedy	343	280	104	120	30.3	42.9	60	43	19	18	31.7	41.9	136	94	35	31	25.7	33.0
Col. Zadok Magruder	450	458	338	319	75.1	69.7	97	105	70	79	72.2	75.2	47	44	28	22	59.6	50.0
Richard Montgomery	1,017	1,074	843	912	82.9	84.9	363	370	310	322	85.4	87.0	90	109	58	84	64.4	77.1
Northwest	864	963	536	636	62.0	66.0	252	275	167	205	66.3	74.5	134	171	61	76	45.5	44.4
Northwood	341	446	174	207	51.0	46.4	41	46	17	25	41.5	54.3	81	120	31	38	38.3	31.7
Paint Branch	543	562	366	390	67.4	69.4	146	138	96	99	65.8	71.7	239	264	155	178	64.9	67.4
Poolesville	748	745	661	664	88.4	89.1	--	--	--	--	≥95.0	≥95.0	24	29	22	27	91.7	93.1
Quince Orchard	1,003	1,019	602	662	60.0	65.0	152	165	91	119	59.9	72.1	95	111	39	44	41.1	39.6
Rockville	331	392	212	264	64.0	67.3	45	50	26	27	57.8	54.0	34	37	16	22	47.1	59.5
Seneca Valley	233	161	124	78	53.2	48.4	42	39	30	21	71.4	53.8	52	27	25	10	48.1	37.0
Sherwood	827	814	640	636	77.4	78.1	133	123	109	92	82.0	74.8	89	85	55	57	61.8	67.1
Springbrook	478	521	251	274	52.5	52.6	97	107	53	56	54.6	52.3	183	205	84	90	45.9	43.9
Watkins Mill	281	313	112	114	39.9	36.4	43	50	20	22	46.5	44.0	61	81	9	14	14.8	17.3
Wheaton	477	538	268	326	56.2	60.6	87	120	58	79	66.7	65.8	144	157	67	76	46.5	48.4
Walt Whitman	1,124	1,153	1,029	1,060	91.5	91.9	137	158	127	141	92.7	89.2	21	--	18	--	85.7	70.0
Thomas S. Wootton	1,222	1,244	1,112	1,132	91.0	91.0	552	541	503	499	91.1	92.2	33	31	30	24	90.9	77.4

Note. AP = Advanced Placement. Results for MCPS American Indian or Alaskan Native and Native Hawaiian or Other Pacific Islander students are included with all students but are not reported separately. AP exam results are based on data reported by the College Board as of September 2016. To comply with federal requirements, any percentage rates greater than or equal to 95.0% or less than or equal to 5.0% will be noted as ≥95.0 or ≤5.0, respectively, and the number of students who took AP exams and the number of students with at least a score of 3 or higher will not be reported (--). Additionally, results are not reported (--) for groups with fewer than 10 test takers. For groups of between 10 and 20 test takers, only the percentage rate will be reported.

Table A3b
 Number of Students Who Took One or More Advanced Placement Exams and Number and Percentage of Test Takers Who Earned One or More Advanced Placement Exam Scores of 3 or Higher in 2015 and 2016 by High School and Race/Ethnicity

High School	Hispanic/Latino						White						Two or More Races					
	N Took AP Exam		N Scored 3 or Higher		% Scored 3 or Higher		N Took AP Exam		N Scored 3 or Higher		% Scored 3 or Higher		N Took AP Exam		N Scored 3 or Higher		% Scored 3 or Higher	
	2015	2016	2015	2016	2015	2016	2015	2016	2015	2016	2015	2016	2015	2016	2015	2016	2015	2016
All	2,480	2,567	1,586	1,656	64.0	64.5	7,669	7,807	6,325	6,525	82.5	83.6	794	867	639	689	80.5	79.5
Bethesda-Chevy Chase	90	105	68	85	75.6	81.0	612	650	539	573	88.1	88.2	53	58	48	53	90.6	91.4
Montgomery Blair	102	109	85	90	83.3	82.6	363	357	344	339	94.8	95.0	47	--	42	--	89.4	≥95.0
James Hubert Blake	86	93	60	61	69.8	65.6	167	174	139	142	83.2	81.6	30	32	23	25	76.7	78.1
Winston Churchill	99	87	82	71	82.8	81.6	693	714	615	610	88.7	85.4	52	62	49	56	94.2	90.3
Clarksburg	98	88	61	57	62.2	64.8	181	187	134	150	74.0	80.2	25	29	18	18	72.0	62.1
Damascus	51	51	35	38	68.6	74.5	318	308	222	224	69.8	72.7	--	--	--	--	50.0	62.5
Albert Einstein	131	150	91	100	69.5	66.7	176	173	151	161	85.8	93.1	--	--	--	--	71.4	66.7
Gaithersburg	144	143	94	88	65.3	61.5	131	114	87	68	66.4	59.6	--	--	--	--	47.1	63.6
Walter Johnson	152	153	124	123	81.6	80.4	728	746	665	683	91.3	91.6	76	77	68	65	89.5	84.4
John F. Kennedy	119	114	37	50	31.1	43.9	23	22	11	18	47.8	81.8	--	--	--	--	--	--
Col. Zadok Magruder	93	101	72	73	77.4	72.3	187	186	149	129	79.7	69.4	26	--	19	--	73.1	70.0
Richard Montgomery	156	132	123	106	78.8	80.3	354	397	303	347	85.6	87.4	51	63	47	51	92.2	81.0
Northwest	116	122	56	61	48.3	50.0	316	341	221	255	69.9	74.8	44	53	30	39	68.2	73.6
Northwood	115	154	62	64	53.9	41.6	94	108	58	73	61.7	67.6	--	--	--	--	60.0	38.9
Paint Branch	61	61	40	39	65.6	63.9	75	73	60	55	80.0	75.3	21	23	15	17	71.4	73.9
Poolesville	39	49	31	41	79.5	83.7	380	350	317	296	83.4	84.6	40	47	36	40	90.0	85.1
Quince Orchard	144	143	71	80	49.3	55.9	569	557	374	388	65.7	69.7	41	42	27	31	65.9	73.8
Rockville	62	100	32	56	51.6	56.0	166	185	122	143	73.5	77.3	23	--	15	--	65.2	78.9
Seneca Valley	34	24	11	5	32.4	20.8	86	61	46	35	53.5	57.4	--	--	--	--	61.1	70.0
Sherwood	79	67	55	53	69.6	79.1	495	506	396	406	80.0	80.2	31	33	25	28	80.6	84.8
Springbrook	100	95	49	50	49.0	52.6	77	82	49	60	63.6	73.2	21	32	16	18	76.2	56.3
Watkins Mill	114	102	52	36	45.6	35.3	53	61	28	35	52.8	57.4	--	--	--	--	--	36.8
Wheaton	164	176	80	100	48.8	56.8	64	68	50	60	78.1	88.2	--	--	--	--	72.2	73.3
Walt Whitman	81	85	68	75	84.0	88.2	818	823	753	766	92.1	93.1	66	--	62	--	93.9	≥95.0
Thomas S. Wootton	50	63	47	54	94.0	85.7	543	559	492	508	90.6	90.9	42	49	39	46	92.9	93.9

Note. AP = Advanced Placement. Results for MCPS American Indian or Alaskan Native and Native Hawaiian or Other Pacific Islander students are included with all students but are not reported separately. AP exam results are based on data reported by the College Board as of September 2016. To comply with federal requirements, any percentage rates greater than or equal to 95.0% or less than or equal to 5.0% will be noted as ≥95.0 or ≤5.0, respectively, and the number of students who took AP exams and the number of students with at least a score of 3 or higher will not be reported (--). Additionally, results are not reported (--) for groups with fewer than 10 test takers. For groups of between 10 and 20 test takers, only the percentage rate will be reported.

Table A4a
 Number of Students Who Took One or More Advanced Placement Exams and Number and Percentage of Test Takers
 Who Earned One or More Advanced Placement Exam Scores of 3 or Higher in 2015 and 2016 by High School and Gender

High School	Male						Female					
	N Took AP Exam		N Scored 3 or Higher		% Scored 3 or Higher		N Took AP Exam		N Scored 3 or Higher		% Scored 3 or Higher	
	2015	2016	2015	2016	2015	2016	2015	2016	2015	2016	2015	2016
All	7,732	7,953	5,921	6,110	76.6	76.8	9,276	9,616	6,871	7,213	74.1	75.0
Bethesda-Chevy Chase	435	461	361	392	83.0	85.0	441	483	366	402	83.0	83.2
Montgomery Blair	428	431	385	390	90.0	90.5	463	479	407	410	87.9	85.6
James Hubert Blake	191	190	134	139	70.2	73.2	333	352	250	245	75.1	69.6
Winston Churchill	581	636	523	549	90.0	86.3	663	656	586	569	88.4	86.7
Clarksburg	257	261	193	193	75.1	73.9	364	384	237	272	65.1	70.8
Damascus	210	201	152	145	72.4	72.1	239	259	161	185	67.4	71.4
Albert Einstein	166	161	117	121	70.5	75.2	334	340	232	249	69.5	73.2
Gaithersburg	190	156	121	80	63.7	51.3	257	253	156	152	60.7	60.1
Walter Johnson	565	575	499	495	88.3	86.1	609	603	540	540	88.7	89.6
John F. Kennedy	122	103	42	46	34.4	44.7	221	177	62	74	28.1	41.8
Col. Zadok Magruder	211	200	158	144	74.9	72.0	239	258	180	175	75.3	67.8
Richard Montgomery	456	483	382	411	83.8	85.1	561	591	461	501	82.2	84.8
Northwest	375	410	234	263	62.4	64.1	489	553	302	373	61.8	67.5
Northwood	127	182	77	91	60.6	50.0	214	264	97	116	45.3	43.9
Paint Branch	252	238	180	179	71.4	75.2	291	324	186	211	63.9	65.1
Poolesville	381	369	332	328	87.1	88.9	367	376	329	336	89.6	89.4
Quince Orchard	460	481	280	302	60.9	62.8	543	538	322	360	59.3	66.9
Rockville	152	201	99	139	65.1	69.2	179	191	113	125	63.1	65.4
Seneca Valley	83	53	34	27	41.0	50.9	150	108	90	51	60.0	47.2
Sherwood	358	365	276	281	77.1	77.0	469	449	364	355	77.6	79.1
Springbrook	234	259	129	135	55.1	52.1	244	262	122	139	50.0	53.1
Watkins Mill	141	150	56	58	39.7	38.7	140	163	56	56	40.0	34.4
Wheaton	243	290	134	179	55.1	61.7	234	248	134	147	57.3	59.3
Walt Whitman	524	517	486	488	92.7	94.4	600	636	543	572	90.5	89.9
Thomas S. Wootton	590	578	537	535	91.0	92.6	632	666	575	597	91.0	89.6

Note. AP = Advanced Placement. AP exam results are based on data reported by the College Board as of September 2016.

Table A4b
 Number of Students Who Took One or More Advanced Placement Exams and Number and Percentage of Test Takers
 Who Earned One or More Advanced Placement Exam Scores of 3 or Higher in 2015 and 2016 by High School and Service Group

High School	FARMS						Special Education						LEP					
	N Took AP Exam		N Scored 3 or Higher		% Scored 3 or Higher		N Took AP Exam		N Scored 3 or Higher		% Scored 3 or Higher		N Took AP Exam		N Scored 3 or Higher		% Scored 3 or Higher	
	2015	2016	2015	2016	2015	2016	2015	2016	2015	2016	2015	2016	2015	2016	2015	2016	2015	2016
All	2,361	2,465	1,247	1,352	52.8	54.8	324	368	202	230	62.3	62.5	461	481	334	343	72.5	71.3
Bethesda-Chevy Chase	39	43	20	18	51.3	41.9	24	25	20	17	83.3	68.0	--	--	--	--	60.0	73.7
Montgomery Blair	148	170	106	121	71.6	71.2	--	--	--	--	80.0	≥95.0	--	29	--	20	90.0	69.0
James Hubert Blake	99	113	64	70	64.6	61.9	--	--	--	--	--	--	--	--	--	--	--	--
Winston Churchill	24	--	15	--	62.5	70.0	35	36	22	22	62.9	61.1	--	--	--	--	--	--
Clarksburg	85	102	46	64	54.1	62.7	--	--	--	--	--	--	--	--	--	--	90.9	--
Damascus	33	29	25	15	75.8	51.7	--	--	--	--	--	--	--	--	--	--	--	--
Albert Einstein	142	145	88	85	62.0	58.6	--	--	--	--	--	72.7	--	27	--	18	75.0	66.7
Gaithersburg	137	130	82	84	59.9	64.6	--	--	--	--	--	--	55	45	40	37	72.7	82.2
Walter Johnson	43	46	35	34	81.4	73.9	38	38	30	33	78.9	86.8	40	34	33	27	82.5	79.4
John F. Kennedy	170	117	42	50	24.7	42.7	--	--	--	--	--	--	21	22	7	16	33.3	72.7
Col. Zadok Magruder	79	80	57	54	72.2	67.5	--	--	--	--	--	--	--	--	--	--	92.3	91.7
Richard Montgomery	116	108	73	82	62.9	75.9	--	21	--	16	72.2	76.2	21	23	17	19	81.0	82.6
Northwest	136	147	60	82	44.1	55.8	--	--	--	--	50.0	37.5	--	--	--	--	--	--
Northwood	107	156	42	52	39.3	33.3	--	--	--	--	--	27.8	22	37	12	22	54.5	59.5
Paint Branch	130	136	79	80	60.8	58.8	--	--	--	--	--	--	--	--	--	--	--	--
Poolesville	32	39	25	32	78.1	82.1	--	--	--	--	68.8	86.7	--	--	--	--	--	--
Quince Orchard	149	147	66	74	44.3	50.3	27	25	7	8	25.9	32.0	21	27	16	17	76.2	63.0
Rockville	60	73	26	42	43.3	57.5	--	--	--	--	42.9	55.6	--	--	--	--	--	80.0
Seneca Valley	38	40	15	14	39.5	35.0	--	--	--	--	--	--	--	--	--	--	--	--
Sherwood	65	63	37	38	56.9	60.3	--	--	--	--	33.3	--	31	22	21	16	67.7	72.7
Springbrook	157	168	68	67	43.3	39.9	--	--	--	--	--	--	--	--	--	--	23.1	35.7
Watkins Mill	125	129	47	36	37.6	27.9	--	--	--	--	--	--	33	--	26	--	78.8	44.4
Wheaton	202	212	89	104	44.1	49.1	--	--	--	--	40.0	50.0	29	35	18	28	62.1	80.0
Walt Whitman	--	--	--	--	--	66.7	40	40	33	35	82.5	87.5	--	46	--	37	≥95.0	80.4
Thomas S. Wootton	36	36	32	30	88.9	83.3	--	--	--	--	50.0	68.4	--	--	--	--	92.3	77.8

Note. AP = Advanced Placement. FARMS = Free and Reduced-price Meals System; ESOL = English for Speakers of Other Languages. AP exam results are based on data reported by the College Board as of September 2016. To comply with federal requirements, any percentage rates greater than or equal to 95.0% or less than or equal to 5.0% will be noted as ≥95.0 or ≤5.0, respectively, and the number of students who took AP exams and the number of students with at least a score of 3 or higher will not be reported (--). Additionally, results are not reported (--) for groups with fewer than 10 test takers. For groups of between 10 and 20 test takers, only the percentage rate will be reported.

Table A5
Number and Percentage of MCPS Students Who Took Advanced Placement Exams by Number of Advanced Placement Exams Taken,
Race/Ethnicity and Advanced Placement Exam Year

Student Group	AP Exam Year	N Took Any AP Exams	AP Exam(s)									
			N Took One	N Took Two	N Took Three	N Took Four	N Took Five or More	% Took One	% Took Two	% Took Three	% Took Four	% Took Five or More
All	2013	17,009	8,221	3,867	2,866	1,422	--	48.3	22.7	16.8	8.4	≤5.0
	2014	17,055	8,265	3,917	2,842	1,361	--	48.5	23.0	16.7	8.0	≤5.0
	2015	17,008	8,334	3,817	2,730	1,437	--	49.0	22.4	16.1	8.4	≤5.0
	2016	17,569	8,542	3,907	2,912	1,546	--	48.6	22.2	16.6	8.8	≤5.0
Asian	2013	3,801	1,572	771	684	474	300	41.4	20.3	18.0	12.5	7.9
	2014	3,791	1,471	830	719	456	315	38.8	21.9	19.0	12.0	8.3
	2015	3,778	1,592	767	628	473	318	42.1	20.3	16.6	12.5	8.4
	2016	3,852	1,609	777	692	478	296	41.8	20.2	18.0	12.4	7.7
Black or African American	2013	2,060	1,274	446	247	--	--	61.8	21.7	12.0	≤5.0	≤5.0
	2014	2,192	1,302	538	241	--	--	59.4	24.5	11.0	≤5.0	≤5.0
	2015	2,264	1,312	552	275	--	--	58.0	24.4	12.1	≤5.0	≤5.0
	2016	2,453	1,437	551	327	--	--	58.6	22.5	13.3	≤5.0	≤5.0
Hispanic/Latino	2013	2,480	1,394	595	336	--	--	56.2	24.0	13.5	≤5.0	≤5.0
	2014	2,484	1,371	636	327	--	--	55.2	25.6	13.2	≤5.0	≤5.0
	2015	2,480	1,412	601	305	--	--	56.9	24.2	12.3	≤5.0	≤5.0
	2016	2,567	1,497	613	300	--	--	58.3	23.9	11.7	≤5.0	≤5.0
White	2013	7,867	3,618	1,880	1,446	672	--	46.0	23.9	18.4	8.5	≤5.0
	2014	7,825	3,736	1,749	1,426	652	--	47.7	22.4	18.2	8.3	≤5.0
	2015	7,669	3,607	1,709	1,389	699	--	47.0	22.3	18.1	9.1	≤5.0
	2016	7,807	3,585	1,762	1,446	748	--	45.9	22.6	18.5	9.6	≤5.0
Two or More Races	2013	771	348	166	149	76	--	45.1	21.5	19.3	9.9	≤5.0
	2014	738	374	159	123	57	--	50.7	21.5	16.7	7.7	≤5.0
	2015	794	399	183	129	57	--	50.3	23.0	16.2	7.2	≤5.0
	2016	867	401	199	145	82	--	46.3	23.0	16.7	9.5	≤5.0

Note. AP = Advanced Placement. Results for MCPS American Indian or Alaskan Native and Native Hawaiian or Other Pacific Islander students are included with all students but are not reported separately. AP exam results are based on data reported by the College Board as of September 2016. To comply with federal requirements, any percentage rates greater than or equal to 95.0% or less than or equal to 5.0% will be noted as ≥95.0 or ≤5.0, respectively, and the number of students who took AP exams and the number of students with at least a score of 3 or higher will not be reported (--). Additionally, results are not reported (-) for groups with fewer than 10 test takers. For groups of between 10 and 20 test takers, only the percentage rate will be reported.

Table A6
Number and Percentage of MCPS Students Who Took Advanced Placement Exams in 2016 by
Number of Advanced Placement Exams Taken by High School

High School	N Took Any AP Exams	AP Exam(s)									
		N Took One	N Took Two	N Took Three	N Took Four	N Took Five or More	% Took One	% Took Two	% Took Three	% Took Four	% Took Five or More
All	17,569	8,542	3,907	2,912	1,546	--	48.6	22.2	16.6	8.8	≤5.0
Bethesda-Chevy Chase	944	499	178	138	78	51	52.9	18.9	14.6	8.3	5.4
Montgomery Blair	910	307	252	190	96	65	33.7	27.7	20.9	10.5	7.1
James Hubert Blake	542	258	122	111	40	--	47.6	22.5	20.5	7.4	≤5.0
Winston Churchill	1,292	483	299	236	163	111	37.4	23.1	18.3	12.6	8.6
Clarksburg	645	360	109	118	44	--	55.8	16.9	18.3	6.8	≤5.0
Damascus	460	215	99	108	34	--	46.7	21.5	23.5	7.4	≤5.0
Albert Einstein	501	249	131	77	34	--	49.7	26.1	15.4	6.8	≤5.0
Gaithersburg	409	272	91	39	--	--	66.5	22.2	9.5	≤5.0	≤5.0
Walter Johnson	1,178	514	297	202	120	--	43.6	25.2	17.1	10.2	≤5.0
John F. Kennedy	280	200	62	17	--	--	71.4	22.1	6.1	≤5.0	≤5.0
Col. Zadok Magruder	458	255	98	73	24	--	55.7	21.4	15.9	5.2	≤5.0
Richard Montgomery	1,074	480	252	167	104	71	44.7	23.5	15.5	9.7	6.6
Northwest	963	493	153	189	112	--	51.2	15.9	19.6	11.6	≤5.0
Northwood	446	248	137	54	--	--	55.6	30.7	12.1	≤5.0	≤5.0
Paint Branch	562	295	129	105	--	--	52.5	23.0	18.7	≤5.0	≤5.0
Poolesville	745	219	164	148	124	90	29.4	22.0	19.9	16.6	12.1
Quince Orchard	1,019	462	195	196	121	--	45.3	19.1	19.2	11.9	≤5.0
Rockville	392	256	75	47	--	--	65.3	19.1	12.0	≤5.0	≤5.0
Seneca Valley	161	149	11	--	--	--	92.5	6.8	≤5.0	≤5.0	≤5.0
Sherwood	814	375	169	165	93	--	46.1	20.8	20.3	11.4	≤5.0
Springbrook	521	295	123	67	--	--	56.6	23.6	12.9	≤5.0	≤5.0
Watkins Mill	313	290	22	--	--	--	92.7	7.0	≤5.0	≤5.0	≤5.0
Wheaton	538	281	148	56	43	--	52.2	27.5	10.4	8.0	≤5.0
Walt Whitman	1,153	532	262	208	116	--	46.1	22.7	18.0	10.1	≤5.0
Thomas S. Wootton	1,244	550	329	199	117	--	44.2	26.4	16.0	9.4	≤5.0

Note. AP = Advanced Placement. AP exam results are based on data reported by the College Board as of September 2016. To comply with federal requirements, any percentage rates greater than or equal to 95.0% or less than or equal to 5.0% will be noted as ≥95.0 or ≤5.0, respectively, and the number of students who took AP exams and the number of students with at least a score of 3 or higher will not be reported (--). Additionally, results are not reported (--) for groups with fewer than 10 test takers. For groups of between 10 and 20 test takers, only the percentage rate will be reported.

Appendix B

Table B1

2016 Advanced Placement Exam Results for MCPS, Maryland, and the Nation: Number of Exams Taken and Percentage of Exam Scores of 1, 2, 3, 4, and 5 for the 20 Most Frequently Taken Advanced Placement Exams by Subject Area

AP Exam by Subject Area	MCPS						Maryland (Public Schools) ^a						Nation (Public Schools) ^a					
	<i>N</i> Exams	% of Exam Scores 1, 2, 3, 4, or 5					<i>N</i> Exams	% of Exam Scores 1, 2, 3, 4 or 5					<i>N</i> Exams	% of Exam Scores 1, 2, 3, 4, or 5				
		1	2	3	4	5		1	2	3	4	5		1	2	3	4	5
English																		
English Language & Composition	3,776	7.1	23.9	26.1	23.3	19.6	12,786	10.2	29.7	27.6	19.5	13.1	483,443	13.5	33.4	26.9	16.6	9.6
English Literature & Composition	2,685	7.2	24.9	29.2	25.0	13.8	9,074	13.6	30.8	27.9	19.4	8.4	342,625	13.2	35.1	28.7	16.5	6.5
Mathematics																		
Calculus AB	1,739	17.8	8.9	17.8	21.9	33.8	6,927	27.0	8.8	17.3	17.7	29.1	250,088	32.1	9.9	17.4	17.1	23.5
Calculus BC	1,299	≤5.0	≤5.0	12.6	15.9	62.7	3,735	11.0	5.5	16.0	16.2	51.3	95,575	13.4	6.0	17.7	15.6	47.4
Statistics	1,568	15.5	11.3	24.2	26.8	22.2	5,448	24.3	13.4	24.6	22.6	15.0	176,696	24.6	15.9	24.8	21.3	13.4
Science																		
Biology	1,254	≤5.0	19.1	32.6	31.3	13.8	4,766	11.5	27.1	32.2	22.1	7.2	202,115	10.8	29.8	33.1	20.1	6.1
Chemistry	975	5.9	16.1	29.1	28.4	20.4	2,872	18.7	22.4	26.9	19.2	12.8	124,235	23.7	25.5	27.1	14.5	9.2
Environmental Science	1,297	18.4	20.6	17.1	31.1	12.8	4,058	25.0	24.7	15.1	25.9	9.4	132,287	29.4	25.8	14.6	22.8	7.4
Physics 1	538	20.6	32.7	24.2	17.1	5.4	2,994	23.2	35.9	22.4	14.8	3.8	143,044	32.3	30.7	20.4	12.7	3.8
Physics C: Mechanics	606	8.4	16.2	16.2	24.8	34.5	1,610	11.6	15.7	18.9	24.8	29.0	39,339	10.1	14.0	18.8	27.3	29.7
Social Studies																		
Microeconomics	598	9.2	8.7	20.4	30.4	31.3	1,833	13.7	14.3	23.3	27.6	21.1	59,187	20.5	14.7	23.1	27.0	14.7
Macroeconomics	591	9.1	11.7	17.1	29.4	32.7	1,860	14.4	15.3	18.0	27.8	24.6	110,535	28.2	17.7	16.3	22.8	15.0
Comparative Government & Politics	463	5.8	13.8	21.2	27.6	31.5	711	7.3	16.5	21.7	26.6	28.0	17,562	16.9	21.8	20.6	21.0	19.8
U.S. Government & Politics	4,733	8.1	18.0	28.0	21.2	24.7	11,200	17.6	21.7	26.3	16.5	17.9	261,824	26.3	24.0	24.5	13.2	11.9
U.S. History	1,774	9.9	19.5	26.4	25.3	19.0	6,590	21.9	24.7	23.8	17.8	11.7	425,621	23.8	22.2	17.1	11.0	0.0
World History	2,955	5.6	20.7	34.4	25.9	13.4	8,951	12.4	25.0	33.0	20.3	9.3	259,016	20.7	29.2	28.9	15.0	6.2
Human Geography	830	15.8	16.9	18.7	27.2	21.4	2,972	25.6	18.4	19.0	21.6	15.2	172,573	29.6	19.3	19.8	19.8	11.6
Psychology	3,177	15.6	11.1	16.7	28.7	27.9	10,047	23.0	13.8	18.6	25.5	19.0	258,553	22.2	14.3	19.1	25.8	18.6
Technology																		
Computer Science A	608	11.2	7.6	18.8	21.9	40.6	1,683	23.8	11.5	21.6	18.2	24.9	46,480	24.2	12.6	23.0	20.1	20.1
Foreign Language																		
Spanish Language	1,043	≤5.0	5.1	23.0	36.3	35.3	2,207	1.1	11.0	29.4	32.3	26.2	136,544	1.4	9.4	27.4	35.0	26.8

Note. AP = Advanced Placement. Sum of percentages calculated from unrounded values may vary by ±0.1 points from rounded percentages. To comply with federal requirements, any percentage rates greater than or equal to 95.0% or less than or equal to 5.0% will be noted as ≥95.0 or ≤5.0, respectively.

^a AP exam results for Maryland and the nation are based on September 2016 exam data reported by the College Board.

Table B2

Advanced Placement Exam Results for MCPS: Number of Exams Taken and Number and Percentage of Exam Scores of 3 or Higher for the 20 Most Frequently Taken Advanced Placement Exams by Subject Area, Year, and Race/Ethnicity

AP Exam by Subject Area	Year	All			Asian			Black or African American			Hispanic/Latino			White			Two or More Races		
		N AP Exams Taken	N AP Exams 3 or Higher	% AP Exams 3 or Higher	N AP Exams Taken	N AP Exams 3 or Higher	% AP Exams 3 or Higher	N AP Exams Taken	N AP Exams 3 or Higher	% AP Exams 3 or Higher	N AP Exams Taken	N AP Exams 3 or Higher	% AP Exams 3 or Higher	N AP Exams Taken	N AP Exams 3 or Higher	% AP Exams 3 or Higher	N AP Exams Taken	N AP Exams 3 or Higher	% AP Exams 3 or Higher
English																			
English Language and Composition	2013	3,781	2,502	66.2	852	617	72.4	438	173	39.5	486	201	41.4	1,830	1,381	75.5	170	126	74.1
	2014	3,701	2,488	67.2	869	624	71.8	462	213	46.1	476	198	41.6	1,734	1,331	76.8	153	117	76.5
	2015	3,838	2,721	70.9	857	660	77.0	489	227	46.4	462	205	44.4	1,831	1,472	80.4	193	154	79.8
	2016	3,776	2,603	68.9	798	640	80.2	539	251	46.6	531	240	45.2	1,726	1,333	77.2	179	137	76.5
English Literature and Composition	2013	2,767	1,939	70.1	635	481	75.7	310	146	47.1	290	130	44.8	1,365	1,063	77.9	160	113	70.6
	2014	2,780	1,849	66.5	625	451	72.2	313	127	40.6	324	138	42.6	1,383	1,031	74.5	131	99	75.6
	2015	2,608	1,713	65.7	585	412	70.4	308	137	44.5	307	129	42.0	1,304	963	73.8	98	67	68.4
	2016	2,685	1,824	67.9	566	426	75.3	324	132	40.7	294	136	46.3	1,359	1,022	75.2	136	105	77.2
Mathematics																			
Calculus AB	2013	1,668	1,247	74.8	438	329	75.1	140	68	48.6	181	100	55.2	827	684	82.7	79	64	81.0
	2014	1,719	1,255	73.0	474	347	73.2	178	86	48.3	185	106	57.3	806	657	81.5	71	56	78.9
	2015	1,723	1,255	72.8	463	330	71.3	202	91	45.0	186	101	54.3	781	656	84.0	90	76	84.4
	2016	1,739	1,276	73.4	446	331	74.2	195	87	44.6	171	102	59.6	854	702	82.2	73	54	74.0
Calculus BC	2013	1,176	1,053	89.5	510	463	90.8	44	31	70.5	68	51	75.0	489	448	91.6	63	58	92.1
	2014	1,241	1,136	91.5	497	456	91.8	54	46	85.2	76	60	78.9	560	524	93.6	53	49	92.5
	2015	1,241	1,111	89.5	523	476	91.0	72	55	76.4	86	61	70.9	500	464	92.8	60	55	91.7
	2016	1,299	1,186	91.3	506	467	92.3	76	51	67.1	83	63	75.9	--	--	≥95.0	78	74	94.9
Statistics	2013	1,567	1,105	70.5	487	384	78.9	121	41	33.9	143	58	40.6	742	561	75.6	72	59	81.9
	2014	1,594	1,153	72.3	517	424	82.0	129	39	30.2	181	86	47.5	694	543	78.2	70	60	85.7
	2015	1,630	1,127	69.1	538	410	76.2	181	74	40.9	177	68	38.4	658	520	79.0	71	52	73.2
	2016	1,568	1,148	73.2	460	374	81.3	188	84	44.7	142	66	46.5	686	546	79.6	91	78	85.7
Science																			
Biology	2013	1,502	1,183	78.8	533	434	81.4	155	85	54.8	144	91	63.2	603	516	85.6	65	56	86.2
	2014	1,285	1,081	84.1	513	449	87.5	153	95	62.1	97	67	69.1	474	427	90.1	46	41	89.1
	2015	1,204	1,021	84.8	447	399	89.3	176	112	63.6	98	65	66.3	439	403	91.8	--	--	≥95.0
	2016	1,254	974	77.7	422	348	82.5	175	72	41.1	107	69	64.5	481	425	88.4	68	60	88.2

Continued

Table B2

Advanced Placement Exam Results for MCPS: Number of Exams Taken and Number and Percentage of Exam Scores of 3 or Higher for the 20 Most Frequently Taken Advanced Placement Exams by Subject Area, Year, and Race/Ethnicity

AP Exam by Subject Area	Year	All			Asian			Black or African American			Hispanic/Latino			White			Two or More Races		
		N AP Exams Taken	N AP Exams 3 or Higher	% AP Exams 3 or Higher	N AP Exams Taken	N AP Exams 3 or Higher	% AP Exams 3 or Higher	N AP Exams Taken	N AP Exams 3 or Higher	% AP Exams 3 or Higher	N AP Exams Taken	N AP Exams 3 or Higher	% AP Exams 3 or Higher	N AP Exams Taken	N AP Exams 3 or Higher	% AP Exams 3 or Higher	N AP Exams Taken	N AP Exams 3 or Higher	% AP Exams 3 or Higher
Chemistry	2013	910	771	84.7	417	360	86.3	69	41	59.4	61	44	72.1	320	287	89.7	42	38	90.5
	2014	915	715	78.1	378	294	77.8	76	51	67.1	70	39	55.7	358	300	83.8	33	31	93.9
	2015	871	703	80.7	376	306	81.4	86	51	59.3	65	41	63.1	309	274	88.7	35	31	88.6
	2016	975	760	77.9	381	316	82.9	108	52	48.1	55	28	50.9	386	323	83.7	45	41	91.1
Environmental Science	2013	1,327	760	57.3	245	150	61.2	113	25	22.1	156	56	35.9	745	486	65.2	66	42	63.6
	2014	1,127	693	61.5	219	139	63.5	91	25	27.5	150	58	38.7	624	446	71.5	42	25	59.5
	2015	1,200	725	60.4	212	133	62.7	125	39	31.2	142	55	38.7	666	459	68.9	52	37	71.2
	2016	1,297	791	61.0	239	148	61.9	132	43	32.6	147	57	38.8	724	503	69.5	53	40	75.5
Physics 1	2013	--	--	--	--	--	--	--	--	--	--	--	--	--	--	--	--	--	--
	2014	--	--	--	--	--	--	--	--	--	--	--	--	--	--	--	--	--	--
	2015	414	230	55.6	121	56	46.3	40	--	15.0	36	--	38.9	195	140	71.8	22	--	63.6
	2016	538	251	46.7	150	62	41.3	71	--	8.5	50	--	28.0	221	141	63.8	45	27	60.0
Physics C: Mechanics	2013	547	425	77.7	186	154	82.8	33	--	45.5	27	--	55.6	272	216	79.4	29	25	86.2
	2014	566	467	82.5	214	179	83.6	31	--	54.8	38	24	63.2	251	218	86.9	32	29	90.6
	2015	552	455	82.4	213	180	84.5	27	--	74.1	34	--	47.1	256	218	85.2	--	--	≥95.0
	2016	606	457	75.4	229	181	79.0	37	--	43.2	34	22	64.7	266	204	76.7	40	34	85.0
Social Studies																			
Microeconomics	2013	594	494	83.2	227	200	88.1	--	--	50.0	53	31	58.5	269	230	85.5	27	24	88.9
	2014	590	500	84.7	241	213	88.4	34	--	55.9	38	22	57.9	260	232	89.2	--	--	87.5
	2015	619	476	76.9	214	181	84.6	38	--	36.8	40	24	60.0	296	232	78.4	31	25	80.6
	2016	598	491	82.1	220	189	85.9	25	--	52.0	41	27	65.9	281	235	83.6	31	27	87.1
Macroeconomics	2013	667	505	75.7	256	206	80.5	32	--	40.6	56	32	57.1	293	229	78.2	30	25	83.3
	2014	627	479	76.4	255	200	78.4	35	21	60.0	41	22	53.7	277	221	79.8	--	--	83.3
	2015	613	448	73.1	236	191	80.9	28	--	42.9	30	21	70.0	288	202	70.1	31	22	71.0
	2016	591	468	79.2	228	190	83.3	23	--	52.2	35	23	65.7	273	218	79.9	32	25	78.1
Comparative Government and Politics	2013	420	317	75.5	88	71	80.7	28	--	53.6	50	25	50.0	238	192	80.7	--	--	87.5
	2014	494	369	74.7	91	74	81.3	38	--	47.4	47	24	51.1	295	237	80.3	23	--	69.6
	2015	422	324	76.8	87	70	80.5	22	--	40.9	51	23	45.1	241	207	85.9	21	--	71.4
	2016	463	372	80.3	45	35	77.8	36	22	61.1	46	30	65.2	316	270	85.4	--	--	75.0

Continued

Table B2

Advanced Placement Exam Results for MCPS: Number of Exams Taken and Number and Percentage of Exam Scores of 3 or Higher for the 20 Most Frequently Taken Advanced Placement Exams by Subject Area, Year, and Race/Ethnicity

AP Exam by Subject Area	Year	All			Asian			Black or African American			Hispanic/Latino			White			Two or More Races		
		N AP Exams Taken	N AP Exams 3 or Higher	% AP Exams 3 or Higher	N AP Exams Taken	N AP Exams 3 or Higher	% AP Exams 3 or Higher	N AP Exams Taken	N AP Exams 3 or Higher	% AP Exams 3 or Higher	N AP Exams Taken	N AP Exams 3 or Higher	% AP Exams 3 or Higher	N AP Exams Taken	N AP Exams 3 or Higher	% AP Exams 3 or Higher	N AP Exams Taken	N AP Exams 3 or Higher	% AP Exams 3 or Higher
U.S. Government and Politics	2013	4,088	2,949	72.1	1,020	759	74.4	481	246	51.1	440	232	52.7	1,967	1,572	79.9	170	131	77.1
	2014	4,287	3,061	71.4	972	706	72.6	524	235	44.8	410	207	50.5	2,143	1,739	81.1	230	172	74.8
	2015	4,521	3,270	72.3	1,076	816	75.8	550	295	53.6	503	273	54.3	2,146	1,697	79.1	240	186	77.5
	2016	4,733	3,497	73.9	1,098	840	76.5	646	367	56.8	526	303	57.6	2,181	1,770	81.2	277	212	76.5
U.S. History	2013	1,685	1,177	69.9	380	292	76.8	233	102	43.8	161	81	50.3	816	628	77.0	92	73	79.3
	2014	1,761	1,224	69.5	444	323	72.7	228	122	53.5	199	92	46.2	809	637	78.7	79	50	63.3
	2015	1,665	1,140	68.5	429	326	76.0	226	103	45.6	169	81	47.9	750	558	74.4	90	71	78.9
	2016	1,774	1,253	70.6	533	401	75.2	212	112	52.8	189	92	48.7	739	576	77.9	97	70	72.2
World History	2013	3,049	2,071	67.9	729	537	73.7	395	167	42.3	417	191	45.8	1,380	1,082	78.4	124	92	74.2
	2014	2,974	2,246	75.5	708	555	78.4	432	244	56.5	390	222	56.9	1,314	1,117	85.0	124	104	83.9
	2015	3,011	2,228	74.0	679	542	79.8	445	244	54.8	356	188	52.8	1,388	1,143	82.3	136	108	79.4
	2016	2,955	2,179	73.7	665	527	79.2	473	265	56.0	382	205	53.7	1,286	1,055	82.0	146	126	86.3
Human Geography	2013	539	420	77.9	97	74	76.3	36	--	55.6	69	40	58.0	312	264	84.6	25	22	88.0
	2014	617	431	69.9	103	79	76.7	55	30	54.5	97	50	51.5	340	253	74.4	--	--	85.0
	2015	647	484	74.8	89	58	65.2	68	43	63.2	88	56	63.6	376	306	81.4	25	21	84.0
	2016	830	559	67.3	124	85	68.5	94	51	54.3	114	52	45.6	457	345	75.5	37	24	64.9
Psychology	2013	3,464	2,521	72.8	687	531	77.3	412	200	48.5	499	260	52.1	1,676	1,385	82.6	182	141	77.5
	2014	3,449	2,429	70.4	756	588	77.8	492	226	45.9	514	249	48.4	1,564	1,272	81.3	117	91	77.8
	2015	3,230	2,397	74.2	665	527	79.2	459	253	55.1	497	269	54.1	1,484	1,244	83.8	123	102	82.9
	2016	3,177	2,328	73.3	643	518	80.6	480	230	47.9	426	232	54.5	1,476	1,231	83.4	146	112	76.7
Technology																			
Computer Science A	2013	521	437	83.9	217	190	87.6	31	--	45.2	38	23	60.5	200	175	87.5	--	--	≥95.0
	2014	533	393	73.7	235	192	81.7	42	--	40.5	32	--	46.9	197	152	77.2	27	--	63.0
	2015	612	463	75.7	241	203	84.2	34	--	38.2	46	--	41.3	255	197	77.3	36	31	86.1
	2016	608	494	81.3	259	231	89.2	53	30	56.6	32	21	65.6	220	174	79.1	43	38	88.4

Continued

Table B2

Advanced Placement Exam Results for MCPS: Number of Exams Taken and Number and Percentage of Exam Scores of 3 or Higher for the 20 Most Frequently Taken Advanced Placement Exams by Subject Area, Year, and Race/Ethnicity

AP Exam by Subject Area	Year	All			Asian			Black or African American			Hispanic/Latino			White			Two or More Races		
		N AP Exam s Taken	N AP Exams 3 or Higher	% AP Exams 3 or Higher	N AP Exam s Taken	N AP Exams 3 or Higher	% AP Exams 3 or Higher	N AP Exam s Taken	N AP Exams 3 or Higher	% AP Exams 3 or Higher	N AP Exam s Taken	N AP Exams 3 or Higher	% AP Exams 3 or Higher	N AP Exam s Taken	N AP Exams 3 or Higher	% AP Exams 3 or Higher	N AP Exam s Taken	N AP Exams 3 or Higher	% AP Exams 3 or Higher
Foreign Language	2013	1,061	826	77.9	128	90	70.3	42	--	38.1	590	487	82.5	258	205	79.5	42	27	64.3
Spanish	2014	1,096	1,036	94.5	120	112	93.3	31	21	67.7	607	572	94.2	--	--	≥95.0	28	25	89.3
Language	2015	1,059	998	94.2	117	107	91.5	34	30	88.2	--	--	≥95.0	320	302	94.4	--	--	88.9
	2016	1,043	987	94.6	121	108	89.3	40	33	82.5	--	--	≥95.0	--	--	≥95.0	30	28	93.3

Note. AP = Advanced Placement. Results for MCPS American Indian or Alaskan Native and Native Hawaiian or Other Pacific Islander students are included with all students but are not reported separately. AP exam results are based on data reported by the College Board as of September 2016. Sum of percentages calculated from unrounded values may vary by ±0.1 points from rounded percentages. To comply with federal requirements, any percentage rates greater than or equal to 95.0% or less than or equal to 5.0% will be noted as ≥95.0 or ≤5.0, respectively, and the number of AP exams and the number of exams with scores of 3 or higher will not be reported (--). Additionally, results are not reported (--) for groups with fewer than 10 AP exams. For groups of between 10 and 20 AP exams, only the percentage rate will be reported. No results are available for Physics 1 because it is a new AP exam starting 2015.

Table B3
2016 MCPS Advanced Placement English Language and Composition:
Number of Exams Taken; Percentage of Exam Scores of 1, 2, 3, 4, and 5; and Mean Exam Score by High School

High School	N Exams Taken	% Exam Scores of 1, 2, 3, 4, or 5					% Exam Scores 3 or Higher	Mean Exam Score
		% Score 1	% Score 2	% Score 3	% Score 4	% Score 5		
All	3,776	7.1	23.9	26.1	23.3	19.6	68.9	3.2
Bethesda-Chevy Chase	204	≤5.0	19.6	22.1	32.8	22.1	77.0	3.5
Montgomery Blair	246	≤5.0	11.0	16.3	28.0	43.9	88.2	4.0
James Hubert Blake	110	6.4	28.2	38.2	21.8	5.5	65.5	2.9
Winston Churchill	216	≤5.0	10.6	29.6	33.3	25.9	88.9	3.7
Clarksburg	141	≤5.0	24.8	41.1	19.1	12.8	73.0	3.2
Damascus	112	≤5.0	33.0	34.8	19.6	8.9	63.4	3.0
Albert Einstein	111	8.1	33.3	27.0	18.0	13.5	58.6	3.0
Gaithersburg	101	10.9	44.6	29.7	9.9	≤5.0	44.6	2.5
Walter Johnson	259	≤5.0	14.7	23.9	29.7	29.7	83.4	3.7
John F. Kennedy	25	20.0	52.0	16.0	12.0	≤5.0	28.0	2.2
Col. Zadok Magruder	111	≤5.0	40.5	31.5	18.9	6.3	56.8	2.9
Richard Montgomery	158	≤5.0	22.2	30.4	23.4	21.5	75.3	3.4
Northwest	263	9.1	35.7	28.9	17.1	9.1	55.1	2.8
Northwood	137	32.8	43.8	12.4	7.3	≤5.0	23.4	2.1
Paint Branch	76	≤5.0	26.3	42.1	21.1	7.9	71.1	3.1
Poolesville	170	≤5.0	8.2	23.5	29.4	37.6	90.6	3.9
Quince Orchard	345	16.2	34.5	23.8	19.4	6.1	49.3	2.6
Rockville	132	25.8	34.1	25.8	8.3	6.1	40.2	2.3
Seneca Valley	--	--	--	--	--	--	--	--
Sherwood	201	≤5.0	12.9	28.9	32.8	24.9	86.6	3.7
Springbrook	106	16.0	49.1	21.7	8.5	≤5.0	34.9	2.4
Watkins Mill	65	36.9	43.1	15.4	≤5.0	≤5.0	20.0	1.9
Wheaton	56	5.4	30.4	26.8	19.6	17.9	64.3	3.1
Walt Whitman	140	≤5.0	≤5.0	12.1	30.7	55.7	≥95.0	4.4
Thomas S. Wootton	291	≤5.0	7.2	28.5	33.7	30.6	92.8	3.9

Note. Sum of percentages calculated from unrounded values may vary by ±0.1 points from rounded percentages. To comply with federal requirements, any percentage rates greater than or equal to 95.0% or less than or equal to 5.0% will be noted as ≥95.0 or ≤5.0, respectively. Additionally, results are not reported (--) for groups with fewer than 10 AP exams. For groups of between 10 and 20 AP exams, only the percentage rate will be reported.

Table B4
2016 MCPS Advanced Placement English Literature and Composition:
Number of Exams Taken; Percentage of Exam Scores of 1, 2, 3, 4, and 5; and Mean Exam Score by High School

High School	N Exams Taken	% Exam Scores of 1, 2, 3, 4, or 5					% Exam Scores 3 or Higher	Mean Exam Score
		% Score 1	% Score 2	% Score 3	% Score 4	% Score 5		
All	2,685	7.2	24.9	29.2	25.0	13.8	67.9	3.1
Bethesda-Chevy Chase	141	≤5.0	27.7	35.5	27.0	7.8	70.2	3.1
Montgomery Blair	59	≤5.0	10.2	16.9	45.8	27.1	89.8	3.9
James Hubert Blake	91	5.5	29.7	31.9	26.4	6.6	64.8	3.0
Winston Churchill	244	≤5.0	16.4	31.6	28.7	22.1	82.4	3.5
Clarksburg	55	≤5.0	34.5	34.5	21.8	9.1	65.5	3.1
Damascus	121	≤5.0	43.8	33.1	15.7	≤5.0	52.1	2.7
Albert Einstein	106	6.6	34.0	36.8	13.2	9.4	59.4	2.8
Gaithersburg	58	≤5.0	43.1	29.3	19.0	5.2	53.4	2.8
Walter Johnson	174	≤5.0	20.7	31.6	31.6	16.1	79.3	3.4
John F. Kennedy	44	45.5	47.7	6.8	≤5.0	≤5.0	6.8	1.6
Col. Zadok Magruder	79	≤5.0	36.7	43.0	12.7	6.3	62.0	2.9
Richard Montgomery	202	≤5.0	7.4	22.8	37.1	32.7	92.6	4.0
Northwest	202	11.9	35.1	29.7	18.3	≤5.0	53.0	2.7
Northwood	80	20.0	46.3	21.3	12.5	≤5.0	33.8	2.3
Paint Branch	32	≤5.0	40.6	37.5	12.5	9.4	59.4	2.9
Poolesville	152	≤5.0	10.5	26.3	38.2	24.3	88.8	3.8
Quince Orchard	305	27.5	31.8	24.6	10.5	5.6	40.7	2.3
Rockville	37	≤5.0	62.2	27.0	8.1	≤5.0	35.1	2.4
Seneca Valley	--	--	--	--	--	--	--	--
Sherwood	127	≤5.0	11.8	40.2	33.9	12.6	86.6	3.4
Springbrook	50	18.0	44.0	30.0	≤5.0	6.0	38.0	2.3
Watkins Mill	--	--	--	--	--	--	--	--
Wheaton	40	12.5	30.0	30.0	12.5	15.0	57.5	2.9
Walt Whitman	147	≤5.0	≤5.0	23.8	42.9	28.6	≥95.0	3.9
Thomas S. Wootton	124	≤5.0	≤5.0	27.4	47.6	23.4	≥95.0	3.9

Note. Sum of percentages calculated from unrounded values may vary by ±0.1 points from rounded percentages. To comply with federal requirements, any percentage rates greater than or equal to 95.0% or less than or equal to 5.0% will be noted as ≥95.0 or ≤5.0, respectively. Additionally, results are not reported (--) for groups with fewer than 10 AP exams. For groups of between 10 and 20 AP exams, only the percentage rate will be reported.

Table B5
2016 MCPS Advanced Placement Calculus AB:
Number of Exams Taken; Percentage of Exam Scores of 1, 2, 3, 4, and 5; and Mean Exam Score by High School

High School	N Exams Taken	% Exam Scores of 1, 2, 3, 4, or 5					% Exam Scores 3 or Higher	Mean Exam Score
		% Score 1	% Score 2	% Score 3	% Score 4	% Score 5		
All	1,739	17.8	8.9	17.8	21.9	33.8	73.4	3.4
Bethesda-Chevy Chase	92	15.2	14.1	35.9	25.0	9.8	70.7	3.0
Montgomery Blair	60	15.0	≤5.0	28.3	28.3	25.0	81.7	3.5
James Hubert Blake	39	28.2	7.7	38.5	17.9	7.7	64.1	2.7
Winston Churchill	130	≤5.0	5.4	20.0	30.0	40.8	90.8	4.0
Clarksburg	41	≤5.0	≤5.0	12.2	36.6	48.8	≥95.0	4.3
Damascus	32	≤5.0	≤5.0	31.3	53.1	12.5	≥95.0	3.8
Albert Einstein	45	53.3	≤5.0	15.6	11.1	15.6	42.2	2.3
Gaithersburg	34	35.3	17.6	17.6	14.7	14.7	47.1	2.6
Walter Johnson	157	≤5.0	≤5.0	13.4	26.8	55.4	≥95.0	4.3
John F. Kennedy	10	70.0	10.0	20.0	≤5.0	≤5.0	20.0	1.5
Col. Zadok Magruder	55	9.1	10.9	36.4	25.5	18.2	80.0	3.3
Richard Montgomery	95	9.5	15.8	33.7	20.0	21.1	74.7	3.3
Northwest	79	7.6	≤5.0	11.4	31.6	45.6	88.6	4.0
Northwood	23	60.9	26.1	≤5.0	8.7	≤5.0	13.0	1.6
Paint Branch	53	69.8	15.1	9.4	5.7	≤5.0	15.1	1.5
Poolesville	89	≤5.0	≤5.0	6.7	15.7	75.3	≥95.0	4.6
Quince Orchard	82	≤5.0	≤5.0	≤5.0	13.4	84.1	≥95.0	4.8
Rockville	57	31.6	24.6	10.5	19.3	14.0	43.9	2.6
Seneca Valley	12	≤5.0	8.3	16.7	33.3	41.7	91.7	4.1
Sherwood	114	42.1	19.3	19.3	14.0	5.3	38.6	2.2
Springbrook	58	20.7	19.0	17.2	27.6	15.5	60.3	3.0
Watkins Mill	25	76.0	12.0	≤5.0	8.0	≤5.0	12.0	1.4
Wheaton	84	53.6	9.5	16.7	14.3	6.0	36.9	2.1
Walt Whitman	136	7.4	8.8	18.4	25.0	40.4	83.8	3.8
Thomas S. Wootton	137	≤5.0	≤5.0	8.8	19.7	68.6	≥95.0	4.5

Note. Sum of percentages calculated from unrounded values may vary by ±0.1 points from rounded percentages. To comply with federal requirements, any percentage rates greater than or equal to 95.0% or less than or equal to 5.0% will be noted as ≥95.0 or ≤5.0, respectively. Additionally, results are not reported (--) for groups with fewer than 10 AP exams. For groups of between 10 and 20 AP exams, only the percentage rate will be reported.

Table B6
2016 MCPS Advanced Placement Calculus BC:
Number of Exams Taken; Percentage of Exam Scores of 1, 2, 3, 4, and 5; and Mean Exam Score by High School

High School	N Exams Taken	% Exam Scores of 1, 2, 3, 4, or 5					% Exam Scores 3 or Higher	Mean Exam Score
		% Score 1	% Score 2	% Score 3	% Score 4	% Score 5		
All	1,299	≤5.0	≤5.0	12.6	15.9	62.7	91.3	4.3
Bethesda-Chevy Chase	82	≤5.0	≤5.0	≤5.0	14.6	80.5	≥95.0	4.8
Montgomery Blair	116	≤5.0	≤5.0	7.8	6.9	80.2	94.8	4.6
James Hubert Blake	57	10.5	10.5	21.1	22.8	35.1	78.9	3.6
Winston Churchill	103	≤5.0	≤5.0	7.8	18.4	72.8	≥95.0	4.6
Clarksburg	32	≤5.0	≤5.0	≤5.0	18.8	71.9	93.8	4.5
Damascus	31	≤5.0	≤5.0	22.6	29.0	45.2	≥95.0	4.2
Albert Einstein	25	32.0	8.0	12.0	20.0	28.0	60.0	3.0
Gaithersburg	11	36.4	≤5.0	18.2	18.2	27.3	63.6	3.0
Walter Johnson	72	≤5.0	≤5.0	11.1	8.3	77.8	≥95.0	4.6
John F. Kennedy	--	--	--	--	--	--	--	--
Col. Zadok Magruder	18	16.7	16.7	33.3	33.3	≤5.0	66.7	2.8
Richard Montgomery	142	≤5.0	≤5.0	9.2	19.7	64.8	93.7	4.4
Northwest	64	≤5.0	≤5.0	9.4	10.9	73.4	93.8	4.5
Northwood	--	--	--	--	--	--	--	--
Paint Branch	29	≤5.0	10.3	24.1	20.7	41.4	86.2	3.9
Poolesville	110	6.4	≤5.0	16.4	20.0	54.5	90.9	4.1
Quince Orchard	66	≤5.0	≤5.0	10.6	≤5.0	84.8	≥95.0	4.7
Rockville	10	20.0	10.0	30.0	30.0	10.0	70.0	3.0
Seneca Valley	--	--	--	--	--	--	--	--
Sherwood	45	6.7	6.7	24.4	20.0	42.2	86.7	3.8
Springbrook	28	14.3	10.7	35.7	21.4	17.9	75.0	3.2
Watkins Mill	24	8.3	8.3	25.0	20.8	37.5	83.3	3.7
Wheaton	32	25.0	12.5	18.8	21.9	21.9	62.5	3.0
Walt Whitman	75	≤5.0	≤5.0	10.7	17.3	68.0	≥95.0	4.5
Thomas S. Wootton	115	≤5.0	≤5.0	5.2	10.4	83.5	≥95.0	4.8

Note. Sum of percentages calculated from unrounded values may vary by ±0.1 points from rounded percentages. To comply with federal requirements, any percentage rates greater than or equal to 95.0% or less than or equal to 5.0% will be noted as ≥95.0 or ≤5.0, respectively. Additionally, results are not reported (--) for groups with fewer than 10 AP exams. For groups of between 10 and 20 AP exams, only the percentage rate will be reported.

Table B7
2016 MCPS Advanced Placement Statistics:
Number of Exams Taken; Percentage of Exam Scores of 1, 2, 3, 4, and 5; and Mean Exam Score by High School

High School	N Exams Taken	% Exam Scores of 1, 2, 3, 4, or 5					% Exam Scores 3 or Higher	Mean Exam Score
		% Score 1	% Score 2	% Score 3	% Score 4	% Score 5		
All	1,568	15.5	11.3	24.2	26.8	22.2	73.2	3.3
Bethesda-Chevy Chase	102	19.6	11.8	34.3	26.5	7.8	68.6	2.9
Montgomery Blair	148	≤5.0	6.8	15.5	33.1	41.2	89.9	4.0
James Hubert Blake	45	48.9	15.6	20.0	11.1	≤5.0	35.6	2.1
Winston Churchill	122	≤5.0	10.7	28.7	38.5	19.7	86.9	3.6
Clarksburg	23	17.4	17.4	43.5	≤5.0	17.4	65.2	2.9
Damascus	46	23.9	26.1	28.3	19.6	≤5.0	50.0	2.5
Albert Einstein	38	15.8	7.9	28.9	18.4	28.9	76.3	3.4
Gaithersburg	29	41.4	24.1	20.7	6.9	6.9	34.5	2.1
Walter Johnson	94	≤5.0	6.4	13.8	33.0	44.7	91.5	4.1
John F. Kennedy	21	47.6	≤5.0	9.5	28.6	9.5	47.6	2.5
Col. Zadok Magruder	43	11.6	16.3	27.9	34.9	9.3	72.1	3.1
Richard Montgomery	123	≤5.0	8.1	18.7	27.6	43.1	89.4	4.0
Northwest	137	33.6	15.3	28.5	16.8	5.8	51.1	2.5
Northwood	25	64.0	20.0	12.0	≤5.0	≤5.0	16.0	1.6
Paint Branch	78	17.9	12.8	32.1	28.2	9.0	69.2	3.0
Poolesville	111	≤5.0	≤5.0	17.1	32.4	46.8	≥95.0	4.2
Quince Orchard	66	≤5.0	13.6	30.3	24.2	27.3	81.8	3.6
Rockville	23	17.4	13.0	13.0	26.1	30.4	69.6	3.4
Seneca Valley	--	--	--	--	--	--	--	--
Sherwood	58	6.9	15.5	37.9	29.3	10.3	77.6	3.2
Springbrook	14	≤5.0	≤5.0	57.1	42.9	≤5.0	≥95.0	3.4
Watkins Mill	26	69.2	19.2	11.5	≤5.0	≤5.0	11.5	1.4
Wheaton	67	41.8	19.4	23.9	11.9	≤5.0	38.8	2.1
Walt Whitman	43	7.0	9.3	20.9	37.2	25.6	83.7	3.7
Thomas S. Wootton	82	≤5.0	≤5.0	23.2	45.1	28.0	≥95.0	4.0

Note. Sum of percentages calculated from unrounded values may vary by ±0.1 points from rounded percentages. To comply with federal requirements, any percentage rates greater than or equal to 95.0% or less than or equal to 5.0% will be noted as ≥95.0 or ≤5.0, respectively. Additionally, results are not reported (--) for groups with fewer than 10 AP exams. For groups of between 10 and 20 AP exams, only the percentage rate will be reported.

Table B8
2016 MCPS Advanced Placement Biology:
Number of Exams Taken; Percentage of Exam Scores of 1, 2, 3, 4, and 5; and Mean Exam Score by High School

High School	N Exams Taken	% Exam Scores of 1, 2, 3, 4, or 5					% Exam Scores 3 or Higher	Mean Exam Score
		% Score 1	% Score 2	% Score 3	% Score 4	% Score 5		
All	1,254	≤5.0	19.1	32.6	31.3	13.8	77.7	3.3
Bethesda-Chevy Chase	48	≤5.0	31.3	37.5	25.0	≤5.0	66.7	3.0
Montgomery Blair	124	≤5.0	12.1	24.2	41.9	19.4	85.5	3.6
James Hubert Blake	33	≤5.0	27.3	45.5	12.1	15.2	72.7	3.2
Winston Churchill	114	≤5.0	9.6	27.2	40.4	21.9	89.5	3.7
Clarksburg	72	≤5.0	16.7	37.5	29.2	15.3	81.9	3.4
Damascus	23	≤5.0	13.0	47.8	39.1	≤5.0	87.0	3.3
Albert Einstein	28	10.7	32.1	50.0	7.1	≤5.0	57.1	2.5
Gaithersburg	37	≤5.0	27.0	32.4	27.0	13.5	73.0	3.3
Walter Johnson	64	≤5.0	≤5.0	14.1	37.5	43.8	≥95.0	4.2
John F. Kennedy	--	--	--	--	--	--	--	--
Col. Zadok Magruder	29	6.9	17.2	55.2	13.8	6.9	75.9	3.0
Richard Montgomery	34	5.9	17.6	17.6	35.3	23.5	76.5	3.5
Northwest	59	≤5.0	15.3	40.7	32.2	10.2	83.1	3.3
Northwood	32	18.8	34.4	28.1	15.6	≤5.0	46.9	2.5
Paint Branch	50	≤5.0	46.0	38.0	12.0	≤5.0	50.0	2.6
Poolesville	50	≤5.0	≤5.0	18.0	52.0	26.0	≥95.0	4.0
Quince Orchard	40	≤5.0	22.5	32.5	27.5	12.5	72.5	3.2
Rockville	14	7.1	21.4	42.9	21.4	7.1	71.4	3.0
Seneca Valley	--	--	--	--	--	--	--	--
Sherwood	121	≤5.0	31.4	33.9	28.1	≤5.0	66.9	3.0
Springbrook	33	9.1	39.4	42.4	9.1	≤5.0	51.5	2.5
Watkins Mill	--	--	--	--	--	--	--	--
Wheaton	59	16.9	27.1	27.1	23.7	5.1	55.9	2.7
Walt Whitman	78	≤5.0	7.7	33.3	43.6	14.1	91.0	3.6
Thomas S. Wootton	112	≤5.0	9.8	38.4	36.6	15.2	90.2	3.6

Note. Sum of percentages calculated from unrounded values may vary by ±0.1 points from rounded percentages. To comply with federal requirements, any percentage rates greater than or equal to 95.0% or less than or equal to 5.0% will be noted as ≥95.0 or ≤5.0, respectively. Additionally, results are not reported (--) for groups with fewer than 10 AP exams. For groups of between 10 and 20 AP exams, only the percentage rate will be reported.

Table B9
2016 MCPS Advanced Placement Chemistry:
Number of Exams Taken; Percentage of Exam Scores of 1, 2, 3, 4, and 5; and Mean Exam Score by High School

High School	N Exams Taken	% Exam Scores of 1, 2, 3, 4, or 5					% Exam Scores 3 or Higher	Mean Exam Score
		% Score 1	% Score 2	% Score 3	% Score 4	% Score 5		
All	975	5.9	16.1	29.1	28.4	20.4	77.9	3.4
Bethesda-Chevy Chase	38	≤5.0	≤5.0	18.4	36.8	42.1	≥95.0	4.2
Montgomery Blair	80	≤5.0	6.3	20.0	38.8	31.3	90.0	3.9
James Hubert Blake	15	6.7	20.0	33.3	40.0	≤5.0	73.3	3.1
Winston Churchill	55	≤5.0	≤5.0	16.4	43.6	38.2	≥95.0	4.2
Clarksburg	48	≤5.0	16.7	47.9	16.7	14.6	79.2	3.2
Damascus	27	≤5.0	37.0	40.7	14.8	7.4	63.0	2.9
Albert Einstein	--	--	--	--	--	--	--	--
Gaithersburg	21	14.3	33.3	28.6	19.0	≤5.0	52.4	2.7
Walter Johnson	83	≤5.0	26.5	31.3	27.7	13.3	72.3	3.3
John F. Kennedy	--	--	--	--	--	--	--	--
Col. Zadok Magruder	--	--	--	--	--	--	--	--
Richard Montgomery	52	≤5.0	5.8	38.5	40.4	13.5	92.3	3.6
Northwest	45	≤5.0	20.0	42.2	28.9	≤5.0	75.6	3.1
Northwood	14	28.6	50.0	14.3	≤5.0	7.1	21.4	2.1
Paint Branch	60	15.0	28.3	35.0	16.7	≤5.0	56.7	2.7
Poolesville	24	≤5.0	≤5.0	20.8	12.5	66.7	≥95.0	4.5
Quince Orchard	55	12.7	41.8	36.4	7.3	≤5.0	45.5	2.4
Rockville	--	--	--	--	--	--	--	--
Seneca Valley	--	--	--	--	--	--	--	--
Sherwood	51	23.5	27.5	29.4	13.7	5.9	49.0	2.5
Springbrook	--	--	--	--	--	--	--	--
Watkins Mill	--	--	--	--	--	--	--	--
Wheaton	48	22.9	22.9	35.4	10.4	8.3	54.2	2.6
Walt Whitman	93	≤5.0	≤5.0	20.4	49.5	25.8	≥95.0	4.0
Thomas S. Wootton	157	≤5.0	6.4	25.5	32.5	35.0	93.0	3.9

Note. Sum of percentages calculated from unrounded values may vary by ±0.1 points from rounded percentages. To comply with federal requirements, any percentage rates greater than or equal to 95.0% or less than or equal to 5.0% will be noted as ≥95.0 or ≤5.0, respectively. Additionally, results are not reported (--) for groups with fewer than 10 AP exams. For groups of between 10 and 20 AP exams, only the percentage rate will be reported.

Table B10
2016 MCPS Advanced Placement Environmental Science:
Number of Exams Taken; Percentage of Exam Scores of 1, 2, 3, 4, and 5; and Mean Exam Score by High School

High School	N Exams Taken	% Exam Scores of 1, 2, 3, 4, or 5					% Exam Scores 3 or Higher	Mean Exam Score
		% Score 1	% Score 2	% Score 3	% Score 4	% Score 5		
All	1,297	18.4	20.6	17.1	31.1	12.8	61.0	3.0
Bethesda-Chevy Chase	112	7.1	22.3	17.0	40.2	13.4	70.5	3.3
Montgomery Blair	61	9.8	23.0	24.6	34.4	8.2	67.2	3.1
James Hubert Blake	45	22.2	17.8	24.4	28.9	6.7	60.0	2.8
Winston Churchill	152	18.4	30.3	19.1	25.0	7.2	51.3	2.7
Clarksburg	71	38.0	21.1	16.9	15.5	8.5	40.8	2.4
Damascus	27	33.3	22.2	7.4	33.3	≤5.0	44.4	2.5
Albert Einstein	88	38.6	13.6	11.4	29.5	6.8	47.7	2.5
Gaithersburg	18	55.6	22.2	11.1	11.1	≤5.0	22.2	1.8
Walter Johnson	44	≤5.0	9.1	9.1	45.5	31.8	86.4	3.9
John F. Kennedy	--	--	--	--	--	--	--	--
Col. Zadok Magruder	13	15.4	30.8	38.5	15.4	≤5.0	53.8	2.5
Richard Montgomery	96	7.3	13.5	17.7	43.8	17.7	79.2	3.5
Northwest	78	23.1	23.1	19.2	26.9	7.7	53.8	2.7
Northwood	25	52.0	40.0	8.0	≤5.0	≤5.0	8.0	1.6
Paint Branch	25	36.0	20.0	16.0	24.0	≤5.0	44.0	2.4
Poolesville	89	≤5.0	≤5.0	19.1	47.2	25.8	92.1	3.9
Quince Orchard	90	24.4	28.9	17.8	20.0	8.9	46.7	2.6
Rockville	--	--	--	--	--	--	--	--
Seneca Valley	--	--	--	--	--	--	--	--
Sherwood	68	17.6	29.4	19.1	23.5	10.3	52.9	2.8
Springbrook	--	--	--	--	--	--	--	--
Watkins Mill	--	--	--	--	--	--	--	--
Wheaton	--	--	--	--	--	--	--	--
Walt Whitman	149	9.4	16.8	13.4	39.6	20.8	73.8	3.5
Thomas S. Wootton	40	7.5	12.5	20.0	30.0	30.0	80.0	3.6

Note. Sum of percentages calculated from unrounded values may vary by ±0.1 points from rounded percentages. To comply with federal requirements, any percentage rates greater than or equal to 95.0% or less than or equal to 5.0% will be noted as ≥95.0 or ≤5.0, respectively. Additionally, results are not reported (--) for groups with fewer than 10 AP exams. For groups of between 10 and 20 AP exams, only the percentage rate will be reported.

Table B11
2016 MCPS Advanced Placement Physics 1:
Number of Exams Taken; Percentage of Exam Scores of 1, 2, 3, 4, and 5; and Mean Exam Score by High School

High School	N Exams Taken	% Exam Scores of 1, 2, 3, 4, or 5					% Exam Scores 3 or Higher	Mean Exam Score
		% Score 1	% Score 2	% Score 3	% Score 4	% Score 5		
All	538	20.6	32.7	24.2	17.1	5.4	46.7	2.5
Bethesda-Chevy Chase	--	--	--	--	--	--	--	--
Montgomery Blair	--	--	--	--	--	--	--	--
James Hubert Blake	--	--	--	--	--	--	--	--
Winston Churchill	--	--	--	--	--	--	--	--
Clarksburg	22	40.9	36.4	18.2	≤5.0	≤5.0	22.7	1.9
Damascus	14	7.1	28.6	42.9	21.4	≤5.0	64.3	2.8
Albert Einstein	17	17.6	35.3	35.3	11.8	≤5.0	47.1	2.4
Gaithersburg	--	--	--	--	--	--	--	--
Walter Johnson	72	8.3	15.3	25.0	30.6	20.8	76.4	3.4
John F. Kennedy	--	--	--	--	--	--	--	--
Col. Zadok Magruder	--	--	--	--	--	--	--	--
Richard Montgomery	--	--	--	--	--	--	--	--
Northwest	108	32.4	45.4	13.9	8.3	≤5.0	22.2	2.0
Northwood	--	--	--	--	--	--	--	--
Paint Branch	32	31.3	43.8	18.8	6.3	≤5.0	25.0	2.0
Poolesville	36	≤5.0	27.8	36.1	16.7	16.7	69.4	3.2
Quince Orchard	43	7.0	37.2	44.2	11.6	≤5.0	55.8	2.6
Rockville	13	30.8	7.7	46.2	15.4	≤5.0	61.5	2.5
Seneca Valley	--	--	--	--	--	--	--	--
Sherwood	--	--	--	--	--	--	--	--
Springbrook	69	47.8	39.1	5.8	5.8	≤5.0	13.0	1.7
Watkins Mill	--	--	--	--	--	--	--	--
Wheaton	44	6.8	45.5	22.7	22.7	≤5.0	47.7	2.7
Walt Whitman	61	≤5.0	13.1	37.7	39.3	8.2	85.2	3.4
Thomas S. Wootton	--	--	--	--	--	--	--	--

Note. Sum of percentages calculated from unrounded values may vary by ±0.1 points from rounded percentages. To comply with federal requirements, any percentage rates greater than or equal to 95.0% or less than or equal to 5.0% will be noted as ≥95.0 or ≤5.0, respectively. Additionally, results are not reported (--) for groups with fewer than 10 AP exams. For groups of between 10 and 20 AP exams, only the percentage rate will be reported.

Table B12
2016 MCPS Advanced Placement Physics C: Mechanics:
Number of Exams Taken; Percentage of Exam Scores of 1, 2, 3, 4, and 5; and Mean Exam Score by High School

High School	N Exams Taken	% Exam Scores of 1, 2, 3, 4, or 5					% Exam Scores 3 or Higher	Mean Exam Score
		% Score 1	% Score 2	% Score 3	% Score 4	% Score 5		
All	606	8.4	16.2	16.2	24.8	34.5	75.4	3.6
Bethesda-Chevy Chase	40	≤5.0	≤5.0	12.5	27.5	52.5	92.5	4.2
Montgomery Blair	49	≤5.0	10.2	≤5.0	20.4	65.3	89.8	4.4
James Hubert Blake	24	16.7	41.7	≤5.0	16.7	20.8	41.7	2.8
Winston Churchill	36	8.3	11.1	22.2	30.6	27.8	80.6	3.6
Clarksburg	20	10.0	15.0	20.0	45.0	10.0	75.0	3.3
Damascus	--	--	--	--	--	--	--	--
Albert Einstein	--	--	--	--	--	--	--	--
Gaithersburg	--	--	--	--	--	--	--	--
Walter Johnson	17	≤5.0	≤5.0	17.6	35.3	47.1	≥95.0	4.3
John F. Kennedy	--	--	--	--	--	--	--	--
Col. Zadok Magruder	25	16.0	32.0	24.0	28.0	≤5.0	52.0	2.6
Richard Montgomery	69	≤5.0	13.0	21.7	39.1	21.7	82.6	3.6
Northwest	22	31.8	27.3	9.1	18.2	13.6	40.9	2.5
Northwood	--	--	--	--	--	--	--	--
Paint Branch	22	13.6	18.2	22.7	22.7	22.7	68.2	3.2
Poolesville	32	≤5.0	12.5	≤5.0	25.0	59.4	87.5	4.3
Quince Orchard	29	≤5.0	27.6	31.0	27.6	10.3	69.0	3.1
Rockville	--	--	--	--	--	--	--	--
Seneca Valley	--	--	--	--	--	--	--	--
Sherwood	65	26.2	40.0	18.5	6.2	9.2	33.8	2.3
Springbrook	11	≤5.0	36.4	36.4	27.3	≤5.0	63.6	2.9
Watkins Mill	--	--	--	--	--	--	--	--
Wheaton	17	23.5	11.8	29.4	17.6	17.6	64.7	2.9
Walt Whitman	31	≤5.0	≤5.0	9.7	9.7	77.4	≥95.0	4.6
Thomas S. Wootton	82	≤5.0	≤5.0	11.0	28.0	59.8	≥95.0	4.5

Note. Sum of percentages calculated from unrounded values may vary by ±0.1 points from rounded percentages. To comply with federal requirements, any percentage rates greater than or equal to 95.0% or less than or equal to 5.0% will be noted as ≥95.0 or ≤5.0, respectively. Additionally, results are not reported (--) for groups with fewer than 10 AP exams. For groups of between 10 and 20 AP exams, only the percentage rate will be reported.

Table B13
2016 MCPS Advanced Placement Microeconomics:
Number of Exams Taken; Percentage of Exam Scores of 1, 2, 3, 4, and 5; and Mean Exam Score by High School

High School	N Exams Taken	% Exam Scores of 1, 2, 3, 4, or 5					% Exam Scores 3 or Higher	Mean Exam Score
		% Score 1	% Score 2	% Score 3	% Score 4	% Score 5		
All	598	9.2	8.7	20.4	30.4	31.3	82.1	3.7
Bethesda-Chevy Chase	54	7.4	18.5	22.2	40.7	11.1	74.1	3.3
Montgomery Blair	45	≤5.0	11.1	22.2	26.7	37.8	86.7	3.9
James Hubert Blake	--	--	--	--	--	--	--	--
Winston Churchill	106	≤5.0	≤5.0	15.1	27.4	55.7	≥95.0	4.4
Clarksburg	26	11.5	15.4	19.2	30.8	23.1	73.1	3.4
Damascus	--	--	--	--	--	--	--	--
Albert Einstein	--	--	--	--	--	--	--	--
Gaithersburg	11	63.6	27.3	9.1	≤5.0	≤5.0	9.1	1.5
Walter Johnson	64	7.8	6.3	12.5	48.4	25.0	85.9	3.8
John F. Kennedy	--	--	--	--	--	--	--	--
Col. Zadok Magruder	17	47.1	17.6	17.6	11.8	5.9	35.3	2.1
Richard Montgomery	40	≤5.0	10.0	22.5	27.5	40.0	90.0	4.0
Northwest	16	43.8	18.8	18.8	12.5	6.3	37.5	2.2
Northwood	--	--	--	--	--	--	--	--
Paint Branch	--	--	--	--	--	--	--	--
Poolesville	47	≤5.0	≤5.0	12.8	42.6	42.6	≥95.0	4.2
Quince Orchard	33	30.3	12.1	27.3	21.2	9.1	57.6	2.7
Rockville	--	--	--	--	--	--	--	--
Seneca Valley	--	--	--	--	--	--	--	--
Sherwood	13	23.1	15.4	38.5	7.7	15.4	61.5	2.8
Springbrook	--	--	--	--	--	--	--	--
Watkins Mill	--	--	--	--	--	--	--	--
Wheaton	--	--	--	--	--	--	--	--
Walt Whitman	55	10.9	9.1	29.1	25.5	25.5	80.0	3.5
Thomas S. Wootton	71	≤5.0	≤5.0	26.8	32.4	36.6	≥95.0	4.0

Note. Sum of percentages calculated from unrounded values may vary by ±0.1 points from rounded percentages. To comply with federal requirements, any percentage rates greater than or equal to 95.0% or less than or equal to 5.0% will be noted as ≥95.0 or ≤5.0, respectively. Additionally, results are not reported (--) for groups with fewer than 10 AP exams. For groups of between 10 and 20 AP exams, only the percentage rate will be reported.

Table B14
2016 MCPS Advanced Placement Macroeconomics:
Number of Exams Taken; Percentage of Exam Scores of 1, 2, 3, 4, and 5; and Mean Exam Score by High School

High School	N Exams Taken	% Exam Scores of 1, 2, 3, 4, or 5					% Exam Scores 3 or Higher	Mean Exam Score
		% Score 1	% Score 2	% Score 3	% Score 4	% Score 5		
All	591	9.1	11.7	17.1	29.4	32.7	79.2	3.6
Bethesda-Chevy Chase	47	≤5.0	8.5	14.9	55.3	17.0	87.2	3.7
Montgomery Blair	53	5.7	7.5	15.1	30.2	41.5	86.8	3.9
James Hubert Blake	--	--	--	--	--	--	--	--
Winston Churchill	104	≤5.0	≤5.0	23.1	23.1	47.1	93.3	4.1
Clarksburg	25	16.0	16.0	8.0	36.0	24.0	68.0	3.4
Damascus	--	--	--	--	--	--	--	--
Albert Einstein	--	--	--	--	--	--	--	--
Gaithersburg	--	--	--	--	--	--	--	--
Walter Johnson	63	12.7	19.0	11.1	38.1	19.0	68.3	3.3
John F. Kennedy	--	--	--	--	--	--	--	--
Col. Zadok Magruder	18	44.4	16.7	22.2	5.6	11.1	38.9	2.2
Richard Montgomery	38	≤5.0	≤5.0	26.3	31.6	39.5	≥95.0	4.1
Northwest	14	42.9	28.6	7.1	7.1	14.3	28.6	2.2
Northwood	--	--	--	--	--	--	--	--
Paint Branch	--	--	--	--	--	--	--	--
Poolesville	47	≤5.0	6.4	14.9	29.8	48.9	93.6	4.2
Quince Orchard	32	9.4	31.3	6.3	28.1	25.0	59.4	3.3
Rockville	--	--	--	--	--	--	--	--
Seneca Valley	--	--	--	--	--	--	--	--
Sherwood	14	35.7	21.4	28.6	7.1	7.1	42.9	2.3
Springbrook	--	--	--	--	--	--	--	--
Watkins Mill	--	--	--	--	--	--	--	--
Wheaton	--	--	--	--	--	--	--	--
Walt Whitman	58	12.1	13.8	27.6	20.7	25.9	74.1	3.3
Thomas S. Wootton	73	≤5.0	11.0	12.3	34.2	41.1	87.7	4.0

Note. Sum of percentages calculated from unrounded values may vary by ±0.1 points from rounded percentages. To comply with federal requirements, any percentage rates greater than or equal to 95.0% or less than or equal to 5.0% will be noted as ≥95.0 or ≤5.0, respectively. Additionally, results are not reported (--) for groups with fewer than 10 AP exams. For groups of between 10 and 20 AP exams, only the percentage rate will be reported.

Table B15
2016 MCPS Advanced Placement Comparative Government and Politics:
Number of Exams Taken; Percentage of Exam Scores of 1, 2, 3, 4, and 5; and Mean Exam Score by High School

High School	N Exams Taken	% Exam Scores of 1, 2, 3, 4, or 5					% Exam Scores 3 or Higher	Mean Exam Score
		% Score 1	% Score 2	% Score 3	% Score 4	% Score 5		
All	463	5.8	13.8	21.2	27.6	31.5	80.3	3.7
Bethesda-Chevy Chase	44	6.8	13.6	18.2	31.8	29.5	79.5	3.6
Montgomery Blair	11	9.1	≤5.0	9.1	36.4	45.5	90.9	4.1
James Hubert Blake	20	≤5.0	30.0	20.0	25.0	20.0	65.0	3.3
Winston Churchill	113	5.3	18.6	27.4	20.4	28.3	76.1	3.5
Clarksburg	--	--	--	--	--	--	--	--
Damascus	--	--	--	--	--	--	--	--
Albert Einstein	--	--	--	--	--	--	--	--
Gaithersburg	--	--	--	--	--	--	--	--
Walter Johnson	59	8.5	16.9	22.0	25.4	27.1	74.6	3.5
John F. Kennedy	--	--	--	--	--	--	--	--
Col. Zadok Magruder	--	--	--	--	--	--	--	--
Richard Montgomery	--	--	--	--	--	--	--	--
Northwest	--	--	--	--	--	--	--	--
Northwood	--	--	--	--	--	--	--	--
Paint Branch	--	--	--	--	--	--	--	--
Poolesville	--	--	--	--	--	--	--	--
Quince Orchard	39	7.7	5.1	28.2	28.2	30.8	87.2	3.7
Rockville	--	--	--	--	--	--	--	--
Seneca Valley	--	--	--	--	--	--	--	--
Sherwood	--	--	--	--	--	--	--	--
Springbrook	--	--	--	--	--	--	--	--
Watkins Mill	--	--	--	--	--	--	--	--
Wheaton	--	--	--	--	--	--	--	--
Walt Whitman	128	≤5.0	9.4	14.1	34.4	40.6	89.1	4.0
Thomas S. Wootton	49	12.2	14.3	24.5	24.5	24.5	73.5	3.3

Note. Sum of percentages calculated from unrounded values may vary by ±0.1 points from rounded percentages. To comply with federal requirements, any percentage rates greater than or equal to 95.0% or less than or equal to 5.0% will be noted as ≥95.0 or ≤5.0, respectively. Additionally, results are not reported (--) for groups with fewer than 10 AP exams. For groups of between 10 and 20 AP exams, only the percentage rate will be reported.

Table B16
2016 MCPS Advanced Placement U.S. Government and Politics:
Number of Exams Taken; Percentage of Exam Scores of 1, 2, 3, 4, and 5; and Mean Exam Score by High School

High School	N Exams Taken	% Exam Scores of 1, 2, 3, 4, or 5					% Exam Scores 3 or Higher	Mean Exam Score
		% Score 1	% Score 2	% Score 3	% Score 4	% Score 5		
All	4,733	8.1	18.0	28.0	21.2	24.7	73.9	3.4
Bethesda-Chevy Chase	328	≤5.0	14.9	28.4	21.3	31.4	81.1	3.6
Montgomery Blair	261	≤5.0	8.4	19.2	20.7	49.4	89.3	4.1
James Hubert Blake	113	5.3	17.7	31.0	21.2	24.8	77.0	3.4
Winston Churchill	329	≤5.0	13.7	25.2	25.5	33.1	83.9	3.7
Clarksburg	161	12.4	22.4	32.9	21.1	11.2	65.2	3.0
Damascus	157	12.7	16.6	35.0	18.5	17.2	70.7	3.1
Albert Einstein	94	≤5.0	10.6	18.1	29.8	39.4	87.2	3.9
Gaithersburg	57	10.5	29.8	28.1	15.8	15.8	59.6	3.0
Walter Johnson	316	≤5.0	9.8	31.3	23.1	34.2	88.6	3.8
John F. Kennedy	94	34.0	33.0	18.1	10.6	≤5.0	33.0	2.2
Col. Zadok Magruder	92	12.0	38.0	33.7	10.9	5.4	50.0	2.6
Richard Montgomery	351	8.3	21.1	27.6	19.7	23.4	70.7	3.3
Northwest	259	14.7	23.6	27.8	20.1	13.9	61.8	2.9
Northwood	88	21.6	29.5	25.0	12.5	11.4	48.9	2.6
Paint Branch	168	12.5	23.8	35.7	15.5	12.5	63.7	2.9
Poolesville	233	≤5.0	16.3	23.6	26.6	31.8	82.0	3.7
Quince Orchard	200	14.0	18.5	36.0	19.5	12.0	67.5	3.0
Rockville	110	10.0	22.7	25.5	20.9	20.9	67.3	3.2
Seneca Valley	80	18.8	33.8	25.0	15.0	7.5	47.5	2.6
Sherwood	227	≤5.0	15.9	35.2	25.6	20.3	81.1	3.4
Springbrook	133	19.5	27.8	25.6	13.5	13.5	52.6	2.7
Watkins Mill	103	29.1	24.3	25.2	9.7	11.7	46.6	2.5
Wheaton	116	13.8	24.1	33.6	21.6	6.9	62.1	2.8
Walt Whitman	336	≤5.0	12.8	22.9	26.2	36.3	85.4	3.8
Thomas S. Wootton	327	≤5.0	9.8	28.1	26.0	34.3	88.4	3.8

Note. Sum of percentages calculated from unrounded values may vary by ±0.1 points from rounded percentages. To comply with federal requirements, any percentage rates greater than or equal to 95.0% or less than or equal to 5.0% will be noted as ≥95.0 or ≤5.0, respectively. Additionally, results are not reported (--) for groups with fewer than 10 AP exams. For groups of between 10 and 20 AP exams, only the percentage rate will be reported.

Table B17
2016 MCPS Advanced Placement U.S. History:
Number of Exams Taken; Percentage of Exam Scores of 1, 2, 3, 4, and 5; and Mean Exam Score by High School

High School	N Exams Taken	% Exam Scores of 1, 2, 3, 4, or 5					% Exam Scores 3 or Higher	Mean Exam Score
		% Score 1	% Score 2	% Score 3	% Score 4	% Score 5		
All	1,774	9.9	19.5	26.4	25.3	19.0	70.6	3.2
Bethesda-Chevy Chase	70	5.7	≤5.0	17.1	32.9	41.4	91.4	4.0
Montgomery Blair	15	≤5.0	13.3	20.0	40.0	26.7	86.7	3.8
James Hubert Blake	51	11.8	31.4	35.3	17.6	≤5.0	56.9	2.7
Winston Churchill	156	≤5.0	16.0	26.9	34.0	19.2	80.1	3.5
Clarksburg	88	9.1	20.5	25.0	28.4	17.0	70.5	3.2
Damascus	16	≤5.0	25.0	31.3	31.3	12.5	75.0	3.3
Albert Einstein	42	≤5.0	23.8	31.0	33.3	9.5	73.8	3.2
Gaithersburg	50	44.0	48.0	8.0	≤5.0	≤5.0	8.0	1.6
Walter Johnson	132	≤5.0	11.4	21.2	38.6	27.3	87.1	3.8
John F. Kennedy	43	34.9	37.2	14.0	14.0	≤5.0	27.9	2.1
Col. Zadok Magruder	33	≤5.0	21.2	51.5	21.2	≤5.0	75.8	3.0
Richard Montgomery	122	≤5.0	≤5.0	17.2	31.1	50.0	≥95.0	4.3
Northwest	103	≤5.0	33.0	34.0	23.3	7.8	65.0	3.0
Northwood	46	≤5.0	28.3	41.3	17.4	10.9	69.6	3.1
Paint Branch	51	15.7	21.6	25.5	25.5	11.8	62.7	3.0
Poolesville	47	6.4	12.8	29.8	29.8	21.3	80.9	3.5
Quince Orchard	123	19.5	26.0	37.4	12.2	≤5.0	54.5	2.6
Rockville	51	5.9	9.8	47.1	21.6	15.7	84.3	3.3
Seneca Valley	32	15.6	40.6	25.0	18.8	≤5.0	43.8	2.5
Sherwood	60	≤5.0	18.3	23.3	43.3	10.0	76.7	3.4
Springbrook	88	18.2	38.6	29.5	10.2	≤5.0	43.2	2.4
Watkins Mill	64	59.4	23.4	14.1	≤5.0	≤5.0	17.2	1.6
Wheaton	106	6.6	21.7	33.0	25.5	13.2	71.7	3.2
Walt Whitman	78	≤5.0	5.1	9.0	32.1	53.8	94.9	4.3
Thomas S. Wootton	107	≤5.0	≤5.0	25.2	29.9	41.1	≥95.0	4.1

Note. Sum of percentages calculated from unrounded values may vary by ±0.1 points from rounded percentages. To comply with federal requirements, any percentage rates greater than or equal to 95.0% or less than or equal to 5.0% will be noted as ≥95.0 or ≤5.0, respectively. Additionally, results are not reported (--) for groups with fewer than 10 AP exams. For groups of between 10 and 20 AP exams, only the percentage rate will be reported.

Table B18
2016 MCPS Advanced Placement World History:
Number of Exams Taken; Percentage of Exam Scores of 1, 2, 3, 4, and 5; and Mean Exam Score by High School

High School	N Exams Taken	% Exam Scores of 1, 2, 3, 4, or 5					% Exam Scores 3 or Higher	Mean Exam Score
		% Score 1	% Score 2	% Score 3	% Score 4	% Score 5		
All	2,955	5.6	20.7	34.4	25.9	13.4	73.7	3.2
Bethesda-Chevy Chase	115	≤5.0	12.2	35.7	32.2	19.1	87.0	3.6
Montgomery Blair	226	≤5.0	14.6	25.7	35.0	23.5	84.1	3.6
James Hubert Blake	114	≤5.0	28.1	46.5	18.4	≤5.0	68.4	2.9
Winston Churchill	177	≤5.0	7.9	32.2	38.4	20.9	91.5	3.7
Clarksburg	132	12.1	26.5	35.6	19.7	6.1	61.4	2.8
Damascus	101	≤5.0	26.7	41.6	24.8	5.9	72.3	3.1
Albert Einstein	82	8.5	26.8	39.0	17.1	8.5	64.6	2.9
Gaithersburg	23	34.8	39.1	17.4	8.7	≤5.0	26.1	2.0
Walter Johnson	288	≤5.0	13.9	27.8	31.6	22.9	82.3	3.6
John F. Kennedy	38	23.7	44.7	23.7	7.9	≤5.0	31.6	2.2
Col. Zadok Magruder	62	≤5.0	17.7	37.1	30.6	14.5	82.3	3.4
Richard Montgomery	148	10.8	28.4	35.8	20.3	≤5.0	60.8	2.8
Northwest	194	≤5.0	12.4	41.2	33.0	9.8	84.0	3.3
Northwood	68	20.6	25.0	29.4	17.6	7.4	54.4	2.7
Paint Branch	174	≤5.0	26.4	33.9	24.1	14.4	72.4	3.2
Poolesville	223	≤5.0	17.0	39.9	23.3	15.2	78.5	3.3
Quince Orchard	154	6.5	31.8	35.1	21.4	5.2	61.7	2.9
Rockville	40	10.0	17.5	22.5	47.5	≤5.0	72.5	3.2
Seneca Valley	--	--	--	--	--	--	--	--
Sherwood	201	≤5.0	24.9	43.8	23.4	6.0	73.1	3.1
Springbrook	101	12.9	40.6	27.7	16.8	≤5.0	46.5	2.5
Watkins Mill	--	--	--	--	--	--	--	--
Wheaton	119	18.5	29.4	32.8	17.6	≤5.0	52.1	2.5
Walt Whitman	71	≤5.0	≤5.0	11.3	25.4	60.6	≥95.0	4.4
Thomas S. Wootton	103	≤5.0	5.8	42.7	25.2	25.2	93.2	3.7

Note. Sum of percentages calculated from unrounded values may vary by ±0.1 points from rounded percentages. To comply with federal requirements, any percentage rates greater than or equal to 95.0% or less than or equal to 5.0% will be noted as ≥95.0 or ≤5.0, respectively. Additionally, results are not reported (--) for groups with fewer than 10 AP exams. For groups of between 10 and 20 AP exams, only the percentage rate will be reported.

Table B19
 2016 MCPS Advanced Placement Human Geography:
 Number of Exams Taken; Percentage of Exam Scores of 1, 2, 3, 4, and 5; and Mean Exam Score by High School

High School	N Exams Taken	% Exam Scores of 1, 2, 3, 4, or 5					% Exam Scores 3 or Higher	Mean Exam Score
		% Score 1	% Score 2	% Score 3	% Score 4	% Score 5		
All	830	15.8	16.9	18.7	27.2	21.4	67.3	3.2
Bethesda-Chevy Chase	--	--	--	--	--	--	--	--
Montgomery Blair	97	8.2	13.4	21.6	28.9	27.8	78.4	3.5
James Hubert Blake	23	8.7	21.7	17.4	43.5	8.7	69.6	3.2
Winston Churchill	157	9.6	19.7	18.5	24.8	27.4	70.7	3.4
Clarksburg	--	--	--	--	--	--	--	--
Damascus	--	--	--	--	--	--	--	--
Albert Einstein	52	26.9	17.3	19.2	19.2	17.3	55.8	2.8
Gaithersburg	--	--	--	--	--	--	--	--
Walter Johnson	47	≤5.0	10.6	12.8	40.4	36.2	89.4	4.0
John F. Kennedy	15	40.0	20.0	13.3	20.0	6.7	40.0	2.3
Col. Zadok Magruder	75	18.7	20.0	25.3	26.7	9.3	61.3	2.9
Richard Montgomery	31	6.5	12.9	22.6	32.3	25.8	80.6	3.6
Northwest	31	29.0	29.0	9.7	25.8	6.5	41.9	2.5
Northwood	--	--	--	--	--	--	--	--
Paint Branch	--	--	--	--	--	--	--	--
Poolesville	92	8.7	14.1	19.6	38.0	19.6	77.2	3.5
Quince Orchard	53	54.7	11.3	17.0	11.3	5.7	34.0	2.0
Rockville	21	≤5.0	14.3	33.3	28.6	19.0	81.0	3.4
Seneca Valley	--	--	--	--	--	--	--	--
Sherwood	15	33.3	33.3	≤5.0	26.7	6.7	33.3	2.4
Springbrook	--	--	--	--	--	--	--	--
Watkins Mill	--	--	--	--	--	--	--	--
Wheaton	12	50.0	16.7	8.3	8.3	16.7	33.3	2.3
Walt Whitman	57	10.5	15.8	15.8	21.1	36.8	73.7	3.6
Thomas S. Wootton	52	11.5	15.4	19.2	28.8	25.0	73.1	3.4

Note. Sum of percentages calculated from unrounded values may vary by ±0.1 points from rounded percentages. To comply with federal requirements, any percentage rates greater than or equal to 95.0% or less than or equal to 5.0% will be noted as ≥95.0 or ≤5.0, respectively. Additionally, results are not reported (--) for groups with fewer than 10 AP exams. For groups of between 10 and 20 AP exams, only the percentage rate will be reported.

Table B20
2016 MCPS Advanced Placement Psychology:
Number of Exams Taken; Percentage of Exam Scores of 1, 2, 3, 4, and 5; and Mean Exam Score by High School

High School	N Exams Taken	% Exam Scores of 1, 2, 3, 4, or 5					% Exam Scores 3 or Higher	Mean Exam Score
		% Score 1	% Score 2	% Score 3	% Score 4	% Score 5		
All	3,177	15.6	11.1	16.7	28.7	27.9	73.3	3.4
Bethesda-Chevy Chase	157	7.6	9.6	18.5	31.8	32.5	82.8	3.7
Montgomery Blair	149	14.8	10.7	15.4	27.5	31.5	74.5	3.5
James Hubert Blake	143	20.3	20.3	13.3	25.9	20.3	59.4	3.1
Winston Churchill	350	6.0	6.6	14.0	39.7	33.7	87.4	3.9
Clarksburg HS	130	23.8	13.1	23.1	20.8	19.2	63.1	3.0
Damascus	68	27.9	16.2	26.5	22.1	7.4	55.9	2.6
Albert Einstein	63	17.5	12.7	22.2	22.2	25.4	69.8	3.3
Gaithersburg	29	37.9	13.8	20.7	17.2	10.3	48.3	2.5
Walter Johnson	163	5.5	≤5.0	11.7	33.1	45.4	90.2	4.1
John F. Kennedy	33	42.4	18.2	12.1	12.1	15.2	39.4	2.4
Col. Zadok Magruder	53	17.0	13.2	28.3	24.5	17.0	69.8	3.1
Richard Montgomery	177	10.7	6.2	16.9	31.6	34.5	83.1	3.7
Northwest	93	22.6	17.2	18.3	21.5	20.4	60.2	3.0
Northwood	99	57.6	14.1	9.1	11.1	8.1	28.3	2.0
Paint Branch	104	21.2	12.5	26.0	22.1	18.3	66.3	3.0
Poolesville	162	≤5.0	7.4	6.2	35.2	46.9	88.3	4.1
Quince Orchard	173	22.0	12.1	22.0	27.7	16.2	65.9	3.0
Rockville	54	7.4	22.2	25.9	40.7	≤5.0	70.4	3.1
Seneca Valley	33	30.3	24.2	18.2	9.1	18.2	45.5	2.6
Sherwood	174	16.1	14.9	21.3	36.2	11.5	69.0	3.1
Springbrook	134	29.1	23.9	17.9	20.9	8.2	47.0	2.6
Watkins Mill	--	--	--	--	--	--	--	--
Wheaton	79	41.8	13.9	12.7	15.2	16.5	44.3	2.5
Walt Whitman	261	≤5.0	≤5.0	8.8	26.4	60.5	≥95.0	4.4
Thomas S. Wootton	296	8.1	9.8	20.6	33.8	27.7	82.1	3.6

Note. Sum of percentages calculated from unrounded values may vary by ±0.1 points from rounded percentages. To comply with federal requirements, any percentage rates greater than or equal to 95.0% or less than or equal to 5.0% will be noted as ≥95.0 or ≤5.0, respectively. Additionally, results are not reported (--) for groups with fewer than 10 AP exams. For groups of between 10 and 20 AP exams, only the percentage rate will be reported.

Table B21
2016 MCPS Advanced Placement Computer Science A:
Number of Exams Taken; Percentage of Exam Scores of 1, 2, 3, 4, and 5; and Mean Exam Score by High School

High School	N Exams Taken	% Exam Scores of 1, 2, 3, 4, or 5					% Exam Scores 3 or Higher	Mean Exam Score
		% Score 1	% Score 2	% Score 3	% Score 4	% Score 5		
All	608	11.2	7.6	18.8	21.9	40.6	81.3	3.7
Bethesda-Chevy Chase	30	16.7	23.3	16.7	23.3	20.0	60.0	3.1
Montgomery Blair	122	≤5.0	≤5.0	5.7	12.3	78.7	≥95.0	4.7
James Hubert Blake	39	12.8	20.5	33.3	25.6	7.7	66.7	2.9
Walt Churchill	49	≤5.0	≤5.0	14.3	36.7	44.9	≥95.0	4.2
Clarksburg	27	≤5.0	11.1	37.0	22.2	25.9	85.2	3.6
Damascus	14	92.9	7.1	≤5.0	≤5.0	≤5.0	≤5.0	1.1
Albert Einstein	--	--	--	--	--	--	--	--
Gaithersburg	--	--	--	--	--	--	--	--
Walter Johnson	28	≤5.0	7.1	53.6	28.6	7.1	89.3	3.3
John F. Kennedy	--	--	--	--	--	--	--	--
Col. Zadok Magruder	--	--	--	--	--	--	--	--
Richard Montgomery	28	17.9	7.1	28.6	25.0	21.4	75.0	3.3
Northwest	--	--	--	--	--	--	--	--
Northwood	--	--	--	--	--	--	--	--
Paint Branch	--	--	--	--	--	--	--	--
Poolesville	66	≤5.0	≤5.0	15.2	39.4	39.4	93.9	4.1
Quince Orchard	26	19.2	19.2	34.6	23.1	≤5.0	61.5	2.7
Rockville	--	--	--	--	--	--	--	--
Seneca Valley	--	--	--	--	--	--	--	--
Sherwood	--	--	--	--	--	--	--	--
Springbrook	34	38.2	5.9	29.4	17.6	8.8	55.9	2.5
Watkins Mill	--	--	--	--	--	--	--	--
Wheaton	17	41.2	5.9	35.3	11.8	5.9	52.9	2.4
Walt Whitman	17	5.9	5.9	17.6	35.3	35.3	88.2	3.9
Thomas S. Wootton	76	≤5.0	≤5.0	≤5.0	10.5	86.8	≥95.0	4.8

Note. Sum of percentages calculated from unrounded values may vary by ±0.1 points from rounded percentages. To comply with federal requirements, any percentage rates greater than or equal to 95.0% or less than or equal to 5.0% will be noted as ≥95.0 or ≤5.0, respectively. Additionally, results are not reported (--) for groups with fewer than 10 AP exams. For groups of between 10 and 20 AP exams, only the percentage rate will be reported.

Table B22
2016 MCPS Advanced Placement Spanish Language:
Number of Exams Taken; Percentage of Exam Scores of 1, 2, 3, 4, and 5; and Mean Exam Score by High School

High School	N Exams Taken	% Exam Scores of 1, 2, 3, 4, or 5					% Exam Scores 3 or Higher	Mean Exam Score
		% Score 1	% Score 2	% Score 3	% Score 4	% Score 5		
All	1,043	≤5.0	5.1	23.0	36.3	35.3	94.6	4.0
Bethesda-Chevy Chase	62	≤5.0	≤5.0	6.5	46.8	45.2	≥95.0	4.4
Montgomery Blair	60	≤5.0	≤5.0	≤5.0	25.0	70.0	≥95.0	4.7
James Hubert Blake	30	≤5.0	26.7	43.3	16.7	13.3	73.3	3.2
Winston Churchill	58	≤5.0	5.2	25.9	44.8	24.1	94.8	3.9
Clarksburg	15	≤5.0	6.7	26.7	33.3	33.3	93.3	3.9
Damascus	11	≤5.0	9.1	54.5	18.2	18.2	90.9	3.5
Albert Einstein	58	≤5.0	≤5.0	19.0	51.7	27.6	≥95.0	4.1
Gaithersburg	62	≤5.0	6.5	38.7	38.7	16.1	93.5	3.6
Walter Johnson	49	≤5.0	≤5.0	8.2	26.5	65.3	≥95.0	4.6
John F. Kennedy	42	≤5.0	14.3	28.6	38.1	19.0	85.7	3.6
Col. Zadok Magruder	52	≤5.0	≤5.0	23.1	30.8	42.3	≥95.0	4.1
Richard Montgomery	104	≤5.0	≤5.0	27.9	45.2	26.9	≥95.0	4.0
Northwest	51	≤5.0	≤5.0	33.3	29.4	35.3	≥95.0	4.0
Northwood	35	≤5.0	14.3	14.3	45.7	25.7	85.7	3.8
Paint Branch	17	≤5.0	≤5.0	35.3	35.3	29.4	≥95.0	3.9
Poolesville	12	8.3	16.7	41.7	16.7	16.7	75.0	3.2
Quince Orchard	62	≤5.0	11.3	35.5	32.3	21.0	88.7	3.6
Rockville	26	≤5.0	≤5.0	11.5	42.3	46.2	≥95.0	4.3
Seneca Valley	--	--	--	--	--	--	--	--
Sherwood	26	7.7	15.4	19.2	42.3	15.4	76.9	3.4
Springbrook	26	≤5.0	≤5.0	15.4	26.9	53.8	≥95.0	4.3
Watkins Mill	19	≤5.0	10.5	42.1	26.3	21.1	89.5	3.6
Wheaton	48	≤5.0	≤5.0	29.2	37.5	33.3	≥95.0	4.0
Walt Whitman	69	≤5.0	≤5.0	8.7	40.6	49.3	≥95.0	4.4
Thomas S. Wootton	49	≤5.0	6.1	16.3	24.5	53.1	93.9	4.2

Note. Sum of percentages calculated from unrounded values may vary by ±0.1 points from rounded percentages. To comply with federal requirements, any percentage rates greater than or equal to 95.0% or less than or equal to 5.0% will be noted as ≥95.0 or ≤5.0, respectively. Additionally, results are not reported (--) for groups with fewer than 10 AP exams. For groups of between 10 and 20 AP exams, only the percentage rate will be reported.

Appendix C

Table C1

Number of International Baccalaureate Exams Taken by MCPS Students and
Number and Percentage of International Baccalaureate Exam Scores of 4 or Higher in 2015 and 2016 by Race/Ethnicity

	N IB Exams Taken		N IB Exams 4 or Higher		% IB Exams 4 or Higher	
	2015	2016	2015	2016	2015	2016
All Students	3,066	3,404	2,368	2,602	77.2	76.4
Asian	689	775	586	618	85.1	79.7
Black or African American	509	561	287	310	56.4	55.3
Hispanic/Latino	480	588	339	393	70.6	66.8
White	1,218	1,290	1,025	1,130	84.2	87.6
Two or More Races	165	190	127	151	77.0	79.5

Note. IB = International Baccalaureate. Results for MCPS American Indian or Alaskan Native and Native Hawaiian or Other Pacific Islander students are included with all students but are not reported separately. IB exam results are based on data reported by the International Baccalaureate Organization as of September 2016.

Table C2a

Number of International Baccalaureate Exams Taken by MCPS Students and
Number and Percentage of International Baccalaureate Exam Scores of 4 or Higher in 2015 and 2016 by High School and Race/Ethnicity

High School	All Students						Asian				Black or African American							
	N		N		%		N		N		%		N		N		%	
	IB Exams Taken	2015	2016	IB Exams Taken	2015	2016	IB Exams Taken	2015	2016	IB Exams Taken	2015	2016	IB Exams Taken	2015	2016	IB Exams Taken	2015	2016
All	3,066	3,404	2,368	2,602	77.2	76.4	689	775	586	618	85.1	79.7	509	561	287	310	56.4	55.3
Bethesda-Chevy Chase	743	679	609	595	82.0	87.6	35	34	32	24	91.4	70.6	47	42	29	30	61.7	71.4
Albert Einstein	179	164	139	133	77.7	81.1	23	--	15	--	65.2	68.8	27	27	16	15	59.3	55.6
John F. Kennedy	163	219	86	88	52.8	40.2	28	37	14	18	50.0	48.6	75	82	35	26	46.7	31.7
Richard Montgomery	--	835	--	752	≥95.0	90.1	--	406	--	363	≥95.0	89.4	53	52	49	40	92.5	76.9
Rockville	331	415	293	369	88.5	88.9	55	91	51	73	92.7	80.2	27	47	23	39	85.2	83.0
Seneca Valley	296	333	161	211	54.4	63.4	37	45	20	30	54.1	66.7	109	83	49	42	45.0	50.6
Springbrook	208	308	117	171	56.3	55.5	56	65	42	38	75.0	58.5	64	134	28	66	43.8	49.3
Watkins Mill	383	451	235	283	61.4	62.7	75	81	49	61	65.3	75.3	107	94	58	52	54.2	55.3

Note. IB = International Baccalaureate. Results for MCPS American Indian or Alaskan Native and Native Hawaiian or Other Pacific Islander students are included with all students but are not reported separately. IB exam results are based on data reported by the International Baccalaureate Organization as of September 2016. To comply with federal requirements, any percentage rates greater than or equal to 95.0% or less than or equal to 5.0% will be noted as ≥95.0 or ≤5.0, respectively, and the number of IB exams and the number of exams with scores of 4 or higher will not be reported (--). Additionally, results are not reported (-) for groups with fewer than 10 IB exams. For groups of between 10 and 20 IB exams, only the percentage rate will be reported.

Table C2b
Number of International Baccalaureate Exams Taken by MCPS Students and
Number and Percentage of International Baccalaureate Exam Scores of 4 or Higher in 2015 and 2016 by High School and Race/Ethnicity

High School	<u>Hispanic/Latino</u>						<u>White</u>						<u>Two or More Races</u>					
	N		N		%		N		N		%		N		N		%	
	IB Exams Taken		Exams 4 or Higher		Exams 4 or Higher		IB Exams Taken		Exams 4 or Higher		Exams 4 or Higher		IB Exams Taken		Exams 4 or Higher		Exams 4 or Higher	
	2015	2016	2015	2016	2015	2016	2015	2016	2015	2016	2015	2016	2015	2016	2015	2016	2015	2016
All	480	588	339	393	70.6	66.8	1,218	1,290	1,025	1,130	84.2	87.6	165	190	127	151	77.0	79.5
Bethesda-Chevy Chase	73	108	59	98	80.8	90.7	541	448	448	398	82.8	88.8	47	--	41	--	87.2	≥95.0
Albert Einstein	--	--	--	--	68.8	68.4	109	94	93	88	85.3	93.6	--	--	--	--	--	--
John F. Kennedy	46	83	28	31	60.9	37.3	--	--	--	--	64.3	78.6	--	--	--	--	--	--
Richard Montgomery	48	58	44	50	91.7	86.2	--	272	--	256	≥95.0	94.1	44	47	40	43	90.9	91.5
Rockville	81	77	67	66	82.7	85.7	154	--	143	--	92.9	≥95.0	--	--	--	--	64.3	94.4
Seneca Valley	48	64	26	36	54.2	56.3	75	125	47	94	62.7	75.2	27	--	19	--	70.4	56.3
Springbrook	29	39	16	26	55.2	66.7	42	42	24	27	57.1	64.3	--	28	--	14	25.0	50.0
Watkins Mill	139	140	88	73	63.3	52.1	45	113	29	82	64.4	72.6	--	23	--	15	64.7	65.2

Note. IB = International Baccalaureate. Results for MCPS American Indian or Alaskan Native and Native Hawaiian or Other Pacific Islander students are included with all students but are not reported separately. IB exam results are based on data reported by the International Baccalaureate Organization as of September 2016. To comply with federal requirements, any percentage rates greater than or equal to 95.0% or less than or equal to 5.0% will be noted as ≥95.0 or ≤5.0, respectively, and the number of IB exams and the number of exams with scores of 4 or higher will not be reported (--). Additionally, results are not reported (-) for groups with fewer than 10 IB exams. For groups of between 10 and 20 IB exams, only the percentage rate will be reported.

Table C3a
Number of Students Who Took One or More International Baccalaureate Exams and Number and Percentage of Test Takers
Who Earned One or More International Baccalaureate Exam Scores of 4 or Higher in 2015 and 2016 by High School and Race/Ethnicity

High School	<u>All Students</u>						<u>Asian</u>						<u>Black or African American</u>					
	N Took IB Exams		N Scored 4 or Higher		% Scored 4 or Higher		N Took IB Exams		N Scored 4 or Higher		% Scored 4 or Higher		N Took IB Exams		N Scored 4 or Higher		% Scored 4 or Higher	
	2015	2016	2015	2016	2015	2016	2015	2016	2015	2016	2015	2016	2015	2016	2015	2016	2015	2016
All	1,310	1,403	1,042	1,139	79.5	81.2	267	296	234	257	87.6	86.8	239	254	147	154	61.5	60.6
Bethesda-Chevy Chase	326	311	273	278	83.7	89.4	--	--	--	--	94.4	78.9	25	25	17	16	68.0	64.0
Albert Einstein	72	59	61	52	84.7	88.1	--	--	--	--	--	--	--	--	--	--	66.7	--
John F. Kennedy	69	133	51	63	73.9	47.4	--	21	--	13	57.1	61.9	32	48	22	16	68.8	33.3
Richard Montgomery	--	--	--	--	≥95.0	≥95.0	--	--	--	--	≥95.0	≥95.0	--	23	--	18	≥95.0	78.3
Rockville	--	139	--	131	≥95.0	94.2	--	31	--	27	≥95.0	87.1	--	--	--	--	≥95.0	92.3
Seneca Valley	149	157	74	119	49.7	75.8	--	24	--	18	62.5	75.0	53	40	23	28	43.4	70.0
Springbrook	105	114	64	79	61.0	69.3	27	21	19	14	70.4	66.7	31	51	15	33	48.4	64.7
Watkins Mill	200	196	139	134	69.5	68.4	33	35	23	27	69.7	77.1	59	45	35	24	59.3	53.3

Note. IB = International Baccalaureate. Results for MCPS American Indian or Alaskan Native and Native Hawaiian or Other Pacific Islander students are included with all students but are not reported separately. IB exam results are based on data reported by the International Baccalaureate Organization as of September 2016. To comply with federal requirements, any percentage rates greater than or equal to 95.0% or less than or equal to 5.0% will be noted as ≥95.0 or ≤5.0, respectively, and the number of students who took IB exams and the number of students with at least a score of 4 or higher will not be reported (--). Additionally, results are not reported (-) for groups with fewer than 10 test takers. For groups of between 10 and 20 test takers, only the percentage rate will be reported.

Table C3b
Number of Students Who Took One or More International Baccalaureate Exams and Number and Percentage of Test Takers
Who Earned One or More International Baccalaureate Exam Scores of 4 or Higher in 2015 and 2016 by High School and Race/Ethnicity

High School	<u>Hispanic/Latino</u>						<u>White</u>						<u>Two or More Races</u>					
	<i>N</i> Took IB Exams		<i>N</i> Scored 4 or Higher		% Scored 4 or Higher		<i>N</i> Took IB Exams		<i>N</i> Scored 4 or Higher		% Scored 4 or Higher		<i>N</i> Took IB Exams		<i>N</i> Scored 4 or Higher		% Scored 4 or Higher	
	2015	2016	2015	2016	2015	2016	2015	2016	2015	2016	2015	2016	2015	2016	2015	2016	2015	2016
All	231	268	172	199	74.5	74.3	507	513	434	468	85.6	91.2	65	72	54	61	83.1	84.7
Bethesda-Chevy Chase	33	--	26	--	78.8	≥95.0	229	210	195	191	85.2	91.0	21	--	18	--	85.7	≥95.0
Albert Einstein	--	--	--	--	--	--	42	33	37	31	88.1	93.9	--	--	--	--	--	--
John F. Kennedy	--	57	--	29	89.5	50.9	--	--	--	--	--	--	--	--	--	--	--	--
Richard Montgomery	--	22	--	20	≥95.0	90.9	--	--	--	--	≥95.0	≥95.0	--	--	--	--	≥95.0	94.4
Rockville	29	30	26	27	89.7	90.0	--	--	--	--	≥95.0	≥95.0	--	--	--	--	--	--
Seneca Valley	29	33	13	24	44.8	72.7	40	54	22	45	55.0	83.3	--	--	--	--	54.5	--
Springbrook	22	--	13	--	59.1	86.7	--	--	--	--	73.7	77.8	--	--	--	--	--	--
Watkins Mill	72	64	52	42	72.2	65.6	29	41	22	33	75.9	80.5	--	--	--	--	--	72.7

Note. IB = International Baccalaureate. Results for MCPS American Indian or Alaskan Native and Native Hawaiian or Other Pacific Islander students are included with all students but are not reported separately. IB exam results are based on data reported by the International Baccalaureate Organization as of September 2016. To comply with federal requirements, any percentage rates greater than or equal to 95.0% or less than or equal to 5.0% will be noted as ≥95.0 or ≤5.0, respectively, and the number of students who took IB exams and the number of students with at least a score of 4 or higher will not be reported (--). Additionally, results are not reported (--) for groups with fewer than 10 test takers. For groups of between 10 and 20 test takers, only the percentage rate will be reported.

Table C4a
Number of Students Who Took One or More International Baccalaureate Exams and Number and Percentage of Test Takers
Who Earned One or More International Baccalaureate Exam Scores of 4 or Higher in 2015 and 2016 by High School and Gender

High School	<u>Male</u>						<u>Female</u>					
	<i>N</i> Took IB Exam		<i>N</i> Scored 4 or Higher		% Scored 4 or Higher		<i>N</i> Took IB Exam		<i>N</i> Scored 4 or Higher		% Scored 4 or Higher	
	2015	2016	2015	2016	2015	2016	2015	2016	2015	2016	2015	2016
All	571	581	423	459	74.1	79.0	739	822	619	680	83.8	82.7
Bethesda-Chevy Chase	135	142	108	123	80.0	86.6	191	169	165	155	86.4	91.7
Albert Einstein	--	--	--	--	68.4	82.4	53	42	48	38	90.6	90.5
John F. Kennedy	25	58	17	22	68.0	37.9	44	75	34	41	77.3	54.7
Richard Montgomery	--	--	--	--	≥95.0	≥95.0	--	--	--	--	≥95.0	≥95.0
Rockville	--	56	--	50	≥95.0	89.3	--	--	--	--	≥95.0	≥95.0
Seneca Valley	78	54	38	41	48.7	75.9	71	103	36	78	50.7	75.7
Springbrook	53	55	31	39	58.5	70.9	52	59	33	40	63.5	67.8
Watkins Mill	99	71	58	48	58.6	67.6	101	125	81	86	80.2	68.8

Note. IB = International Baccalaureate. IB exam results are based on data reported by the International Baccalaureate Organization as of September 2016. To comply with federal requirements, any percentage rates greater than or equal to 95.0% or less than or equal to 5.0% will be noted as ≥95.0 or ≤5.0, respectively, and the number of students who took IB exams and the number of students with at least a score of 4 or higher will not be reported (--). Additionally, results are not reported (--) for groups with fewer than 10 test takers. For groups of between 10 and 20 test takers, only the percentage rate will be reported.

Table C4b
 Number of Students Who Took One or More International Baccalaureate Exams and Number and Percentage of Test Takers
 Who Earned One or More International Baccalaureate Exam Scores of 4 or Higher in 2015 and 2016 by High School and Service Group

High School	FARMS						Special Education						LEP					
	N Took IB Exams		N Scored 4 or Higher		% Scored 4 or Higher		N Took IB Exams		N Scored 4 or Higher		% Scored 4 or Higher		N Took IB Exams		N Scored 4 or Higher		% Scored 4 or Higher	
	2015	2016	2015	2016	2015	2016	2015	2016	2015	2016	2015	2016	2015	2016	2015	2016	2015	2016
All	232	256	146	158	62.9	61.7	--	32	--	19	78.9	59.4	33	27	24	23	72.7	85.2
Bethesda-Chevy Chase	--	--	--	--	54.5	50.0	--	--	--	--	--	63.6	--	--	--	--	92.3	--
Albert Einstein	--	--	--	--	72.7	60.0	--	--	--	--	--	--	--	--	--	--	--	--
John F. Kennedy	28	58	18	27	64.3	46.6	--	--	--	--	--	--	--	--	--	--	--	--
Richard Montgomery	--	--	--	--	--	83.3	--	--	--	--	--	--	--	--	--	--	--	--
Rockville	--	--	--	--	94.4	94.4	--	--	--	--	--	--	--	--	--	--	--	--
Seneca Valley	43	40	21	28	48.8	70.0	--	--	--	--	--	--	--	--	--	--	--	--
Springbrook	31	30	19	17	61.3	56.7	--	--	--	--	--	--	--	--	--	--	--	--
Watkins Mill	83	72	50	43	60.2	59.7	--	--	--	--	--	--	--	--	--	--	70.0	60.0

Note. IB = International Baccalaureate. Results for MCPS American Indian or Alaskan Native and Native Hawaiian or Other Pacific Islander students are included with all students but are not reported separately. IB exam results are based on data reported by the International Baccalaureate Organization as of September 2016. To comply with federal requirements, any percentage rates greater than or equal to 95.0% or less than or equal to 5.0% will be noted as ≥ 95.0 or ≤ 5.0 , respectively, and the number of students who took IB exams and the number of students with at least a score of 4 or higher will not be reported (--). Additionally, results are not reported (--) for groups with fewer than 10 test takers. For groups of between 10 and 20 test takers, only the percentage rate will be reported.

Table C5

Number and Percentage of MCPS Students Who Took International Baccalaureate Exams by Number of International Baccalaureate Exams Taken, Race/Ethnicity and International Baccalaureate Exam Year

Student Group	IB Exam Year	N Took Any IB Exams	IB Exam(s)									
			N Took One	N Took Two	N Took Three	N Took Four	N Took Five or More	% Took One	% Took Two	% Took Three	% Took Four	% Took Five or More
All	2015	1,310	565	341	--	182	189	43.1	26.0	≤5.0	13.9	14.4
	2016	1,403	592	321	--	206	222	42.2	22.9	≤5.0	14.7	15.8
Asian	2015	267	90	76	--	56	40	33.7	28.5	≤5.0	21.0	15.0
	2016	296	98	76	19	57	46	33.1	25.7	6.4	19.3	15.5
Black or African American	2015	239	121	58	--	20	30	50.6	24.3	≤5.0	8.4	12.6
	2016	254	120	64	13	24	33	47.2	25.2	5.1	9.4	13.0
Hispanic/Latino	2015	231	125	50	--	22	29	54.1	21.6	≤5.0	9.5	12.6
	2016	268	141	47	17	23	40	52.6	17.5	6.3	8.6	14.9
White	2015	507	202	142	--	76	76	39.8	28.0	≤5.0	15.0	15.0
	2016	513	207	116	--	92	87	40.4	22.6	≤5.0	17.9	17.0
Two or More Races	2015	65	27	15	--	8	13	41.5	23.1	≤5.0	12.3	20.0
	2016	72	26	18	--	10	16	36.1	25.0	≤5.0	13.9	22.2

Note. IB = International Baccalaureate. Results for MCPS American Indian or Alaskan Native and Native Hawaiian or Other Pacific Islander students are included with all students but are not reported separately. IB exam results are based on data reported by the International Baccalaureate Organization as of September 2016. To comply with federal requirements, any percentage rates greater than or equal to 95.0% or less than or equal to 5.0% will be noted as ≥95.0 or ≤5.0, respectively, and the number of students who took IB exams and the number of students with at least a score of 4 or higher will not be reported (--). Additionally, results are not reported (--) for groups with fewer than 10 test takers. For groups of between 10 and 20 test takers, only the percentage rate will be reported.

Table C6
 Number and Percentage of MCPS Students Who Took International Baccalaureate Exams in 2016 by
 Number of International Baccalaureate Exams Taken by High School

High School	N Took Any IB Exams	IB Exam(s)									
		N Took One	N Took Two	N Took Three	N Took Four	N Took Five or More	% Took One	% Took Two	% Took Three	% Took Four	% Took Five or More
All	1,403	592	321	--	206	222	42.2	22.9	≤5.0	14.7	15.8
Bethesda-Chevy Chase	311	179	40	--	30	53	57.6	12.9	≤5.0	9.6	17.0
Albert Einstein	59	17	15	--	14	11	28.8	25.4	≤5.0	23.7	18.6
John F. Kennedy	133	89	22	10	--	--	66.9	16.5	7.5	≤5.0	≤5.0
Richard Montgomery	294	75	88	--	75	56	25.5	29.9	≤5.0	25.5	19.0
Rockville	139	33	33	--	50	22	23.7	23.7	≤5.0	36.0	15.8
Seneca Valley	157	68	51	14	--	17	43.3	32.5	8.9	≤5.0	10.8
Springbrook	114	49	19	7	9	30	43.0	16.7	6.1	7.9	26.3
Watkins Mill	196	82	53	19	15	27	41.8	27.0	9.7	7.7	13.8

Note. IB = International Baccalaureate. IB exam results are based on data reported by the International Baccalaureate Organization as of September 2016. To comply with federal requirements, any percentage rates greater than or equal to 95.0% or less than or equal to 5.0% will be noted as ≥95.0 or ≤5.0, respectively, and the number of students who took IB exams and the number of students with at least a score of 4 or higher will not be reported (--). Additionally, results are not reported (--) for groups with fewer than 10 test takers. For groups of between 10 and 20 test takers, only the percentage rate will be reported.