

Beall Elementary School Newsletter

October 1, 2007

Mr. Troy Boddy, Principal
Ms. Mary Reed, Assistant Principal



Principal's News

It has been a fantastic first month of school!

As I walk through the building observing teaching and learning, I am impressed everyday with the excellent teaching/support staff and students we have here at Beall. This is truly an amazing school! It was wonderful meeting many of you at the Back-to-School nights. I spoke with many of you as you left for the evening and heard many positive things about our staff and the school. If you were unable to attend, please be sure to contact your child(s) teacher(s) to set up a parent conference where you can discuss your individual child with the teacher. I look forward to seeing you at the first PTA meeting that will be held on October 2nd at 7:00 in the All Purpose Room.

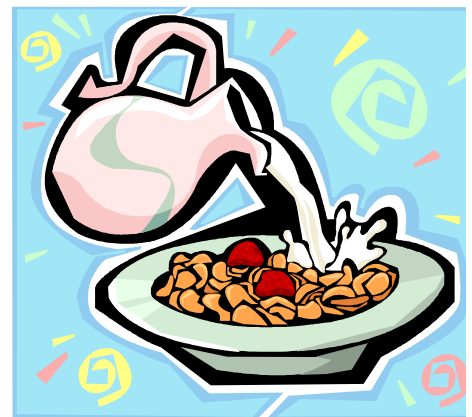
Contents

Principal's News	1
Beall Cafe	1
Homeless Walk	2
Phone Calls	2
Suburban Federal Bank	2
Open House	3
Parent Academy	3
George B Thomas Learning Academy	4
October Calendar	5



Important News from the Beall Cafe

A new food service regulation went into effect as of September 17. MCPS Auditors require all schools to offer the same meal, when a student runs out of lunch money on his/her account. A bowl of cereal and a carton of milk will now be offered. There will be no exceptions to this! Please continue to monitor your child's lunch account balance.



Upcoming Events

- PTA Meeting-
October 2-
7:00 PM
- NO SCHOOL-
October 19



Help the Homeless Mini Walk

Help the Homeless Mini Walk will take place October 22-26. The PE teachers have created an exciting program during regular PE classes for all students who want to participate in this year's fund raising event to benefit **The Stepping Stones Shelter**. Our commitment to helping homeless

families in our community is strong as ever! Please register your child on the yellow forms that are coming home soon. If you have questions, contact: Patti Sorini at (301) 424-8566.



Phone Calls to the School

Parents, please be kind and make your child's transportation arrangements before school. The school office is receiving a large number of last minute phone calls to remind students about riding the bus or to attend an after school activity. Please be aware that the office receives

hundreds of calls a day and it is almost impossible for the staff to alert each student of a parent's request. We thank you in advance for your help.

Suburban Federal Bank Opens a "Twig Branch"

The directors and employees of Suburban Federal Savings Bank believe that teaching our children the basics of personal finance at an early age, results in more financially responsible and independent young adults. Suburban Federal Savings Bank has partnered with the Beall PTA to

implement our Twig Branch program. Students and Suburban Federal staff will manage a weekly branch at Beall. With a child's initial deposit of \$5 or more, a "twig" passbook will be opened. Balanced of \$25 and above will earn interest.

Bank continued...

Students will gain hands on experience in banking. Suburban Federal Bank is committed to strengthen the financial literacy of all children in our community, so they can make educated financial decisions later in life.

For additional information, contact:

Mr. Edward Bendu, Branch Manager
at (301)294-9350.

OPEN HOUSE

On Monday, October 8, is Open House for parents. You are invited to visit the school between 9:30-2:00. We look forward to seeing many parents since this is a good opportunity to observe our instructional program. Visitors are asked to enter the building through the front office and stop at the visitors table to receive passes before proceeding to the classroom. We do **NOT** have supervision for younger brothers and sisters on this day. Please do not bring siblings to school during this time. We will be following our normal schedule so this will be a time for quiet observation in the classrooms. Thank you for your observation.

Computer Resources
MCPS students can access a number of online resources at school and home. Attached to the newsletter is a list of the elementary-level resources. Please do not post this information on a Web page. If you have questions, email: Carolyn Goshen, Media Center,
Carolyn_J_Goshen@mcpsmd.org



*Open House is
Monday, October 9th*

Parent Academy Workshops!

Beginning in October, the school system will be offering workshops for parents and other family members. You will be able to choose from topics that include, helping your child succeed in middle school, managing your finances, understanding ADHD, high school graduation requirements, and more. All workshops are FREE and are held at schools and familiar locations throughout Montgomery County. A flyer was sent home late September. For more

information, download and print the application at:
www.mcpsparentacademy.org



**YOUR LOGO
HERE**

School Name
Beall Elementary

Phone:
(301) 279-8460

Fax:
(301) 279-4999

E-mail:
E-mail address

We're on the Web!
[www.mcps.k12.md.us/be
alles](http://www.mcps.k12.md.us/bealles)