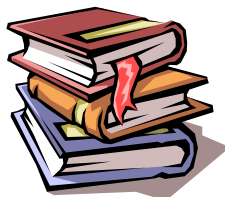


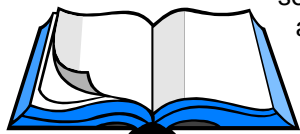
Junior Great Books

During Junior Great Books sessions, students engage in a Shared Inquiry method of learning in which participants search for answers to fundamental questions raised by a text. The goal of the JGB program is to instill in children and adults the habits of the mind that characterize a self-reliant thinker, reader, and learner. In Shared Inquiry, participants learn to give full consideration to the ideas of others, to weigh the merits of opposing arguments, and to modify their opinions as necessary.



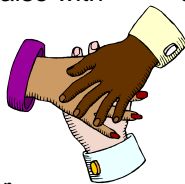
William and Mary

The William and Mary program targets high ability learners. Literature has been selected using specific criteria for highly able students and activities support increased levels of complexity that are essential curriculum elements. Vocabulary study in this program goes beyond definitions. It models detailed study of challenging words, including investigation of etymology, antonyms, synonyms, and related words. Interdisciplinary connections are made in the unit not only by integrating the language arts with music and visual arts, but also with areas of social, cultural, economic, and political inquiry.



School Counseling Program

The School Counseling program provides many opportunities to encourage healthy social, emotional, and academic development in all students. The school counselor provides classroom guidance lessons in each class once a month. The lessons focus on conflict resolution skills and integrate character education. In addition, the counselor holds small group counseling sessions for students who need extra support in a particular area, such as friendship skills, organization/study skills, family changes, loss, and anger management. Individual counseling is also available through a referral from teachers, parents, and/or students. Individual and small group counseling usually take place during lunch. The counselor is available to consult with parents and teachers as needed.



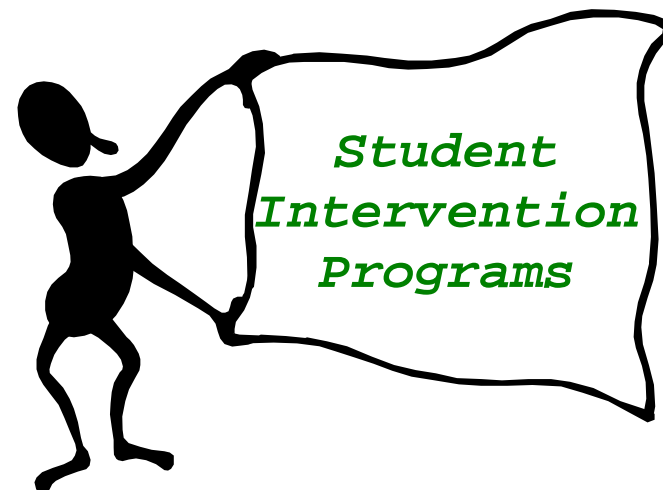
Study Buddy Program

The Study Buddy Program holds students accountable in their learning process. This program concentrates on older students working with younger students in the areas of math and reading. The goal of this program is to provide students with opportunities for teaching skills that they have mastered to younger students. This will reinforce the skill, as well as create a feeling of responsibility and ownership. These are personal traits consistent with our GRRREAT Bullfrog character program. The younger students will also experience success as they are working on fundamental skills that are essential for learning in a fun, creative way.



Great Seneca Creek Elementary School

**Excellence in Teaching & Learning:
Technology Innovation/LEED Design**



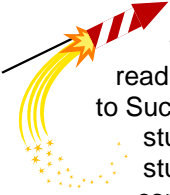
**13010 Dairymaid Drive
Germantown, Maryland 20874
Phone: 301-353-8500 Fax: 301-515-3044**

**Gregory S. Edmundson, Principal
Donna M. Sagona, Assistant, Principal**

Student Intervention Programs

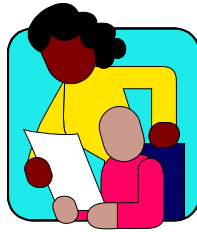
Soar to Success

Soar to Success is a research-based, proven intervention that targets students in grades 3-5 who are reading below grade level. Many of these students know isolated decoding skills, but are not applying them during reading. Often, the reading fluency and the reading comprehension are not at the same level. The goal of Soar to Success is to accelerate the reading comprehension of these students as quickly as possible. This small-group model helps students apply decoding skills and develop effective strategies for constructing meaning.



Early Success

Early Success is a research-based, early intervention reading program we are implementing in grades K-2. The primary goal of this program is to accelerate students' reading abilities by teaching them effective decoding strategies and reading skills. A daily routine is established that includes reading, writing and working with words in a highly structured small group setting. This support is an addition to the classroom reading instruction.



Special Education Resource Program

The resource program serves students of special needs with less than 15 hours of support in the form of plug-in (within the classroom), pullout (small group setting), collaborative, consultative, or a combination designed to meet student individual needs. The program provides supports and resources to teachers and their students who have a disability that impacts academic achievement. These students typically demonstrate learning and/or behavioral needs that affect performance in one or more areas of mathematics, reading, or written language and have an Individualized Education Plan (I.E.P.) that reflects their needs within the school setting.



Speech/Language Program

A school-based speech/language pathologist works with students who have been identified as having needs in the area of oral communication. Their needs in communication interfere with their ability to be successful in the classroom in academic or social situations. A student's needs may exist in the area of articulation (speech sounds), voice, fluency (the rate of speech), and receptive or expressive language.

Excellence in Teaching & Learning

English for Speakers of Other Languages (ESOL)

The ESOL program serves children in grades K through 5 from as many as sixteen countries. The program is designed to meet the students' language proficiency needs and includes oral language, reading, and writing components. The goal is to enable students to be successful in the regular classroom setting.



The Home School Model

Students with special needs who require 15 or more hours per week of special education services are served through the inclusion model. The goal of this model, in place throughout the Northwest Cluster, is to allow students with special needs to participate in the general education program to the maximum extent possible. The classroom teacher and a special educator plan together and work collaboratively to implement the child's individual educational program (IEP).



Gifted and Talented (G/T)

All students are provided with a challenging learning environment, giving additional opportunities for acceleration and enrichment to those in need of such accommodations. Second grade students participate in a global screening each spring. This screening information provides the school with learning characteristics for children, helping staff to best prepare for individualized instruction. Highly able readers in grades 2-5 participate in the William and Mary Reading and Language Arts program in their classrooms. Accelerated Mathematics courses are available to students beginning in grade 2.



Wilson Reading Program

The Wilson Reading System is designed to teach students of all ages. The program directly and systematically teaches students how to read fluently and decode words accurately. The instruction is very active or "hands-on", multi-sensory, and repetitive. It teaches children whole-word construction as they learn to decode (break down words into their sound parts). Students learn rapid, automatic word recognition that helps them to read and comprehend at the same rate. The program is based upon successful experience with thousands of students.