



FY 2026



Operating Budget

Montgomery County Public Schools
Rockville, Maryland

Fiscal and School Year Ending June 30, 2026

Thomas W. Taylor, Ed.D., M.B.A.
Superintendent of Schools

www.montgomeryschoolsmd.org/budget

Chapter 1

Schools

Elementary Schools

Grades K–5

Prekindergarten/Head Start

Grant: Head Start School-based Programs

Grant: Title I, Part A School-based Programs

Middle Schools

Grades 6–8

High Schools

Grades 9–12

Thomas Edison High School of Technology

Alternative Education Programs

Grant: Title I, Part D Prevention and Intervention Programs
for Children and Youth who are Neglected,
Delinquent, or At-Risk

English Learners and Multilingual Education

Grades K–12

Special Education Services

Department of Special Education Services

Special Schools/Centers

Department of Special Education Systems
and Management

Department of Special Education Prekindergarten
and Related Services

Child Find/Preschool Education Programs

Grant: *Individuals with Disabilities Education Act*



Elementary Schools

Principal (P)	137.0
Assistant Principal (N)	132.0
Assistant School Administrator (N)	13.0
IT Systems Specialist (18-25)	38.0
Elementary School Administrative Secretary (17)	137.0
Security Assistant (14)	35.0
School Secretary I (12)	152.0

Other Support Positions	
Building Services (6-16)	662.5*
Food Services (6-16)	211.313*

Teacher Positions	
Counselor (B-D)	192.0
Media Specialist (B-D)	137.0
Teacher, Reading Specialist (B-D)	137.0
Teacher (A-D)	3,128.0
Teacher, Academic Intervention (A-D)	48.9
Teacher, Art (A-D)	152.4
Teacher, Focus (A-D)	91.4
Teacher, Focus/Title I (A-D)	155.4***
Teacher, General Music (A-D)	152.4
Teacher, Head Start (A-D)	12.3
Teacher, Head Start (A-D)	4.4**
Teacher, Head Start/Title I (A-D)	6.8***
Teacher, Instrumental Music (A-D)	44.5
Teacher, Physical Education (A-D)	152.4
Teacher, Pre-K (A-D)	99.1
Teacher, Pre-K/Title I (A-D)	5.0***
Teacher, Reading Initiative (A-D)	37.8
Teacher, Reading Support (A-D)	7.0
Teacher, Special Programs (A-D)	14.8
Teacher, Special Education (A-D)	0.5
Teacher, Staff Development (A-D)	137.0

Support Positions	
Parent Community Coordinator (20)	26.0
Parent Community Coordinator/Title I (17)	11.675***
Paraeducator (12-13)	210.625
Paraeducator, Pre-K (12-13)	107.125
Paraeducator, Pre-K/Title I (12-13)	7.5***
Paraeducator, Head Start (12-13)	20.85
Paraeducator, Head Start (12-13)	4.3**
Paraeducator, Head Start/Title I (12-13)	8.925***
Paraeducator, Focus (12-13)	55.125
Paraeducator, Focus/Title I (12-13)	52.115***
Paraeducator, Special Programs (12-13)	85.5
Paraeducator, Special Education (12-13)	0.563
Media Assistant (12)	72.5
Lunch Hour Aide (12)	155.25
Lunch Hour Aide (7)	14.625

CHAPTER 1 - 1 SCHOOLS

F.T.E. Positions 6,192.778

*This chart includes 873.813 positions from School Plant Operations and Food Services.

**Positions funded by the Head Start grant.

***Positions funded by the Title I, Part A grant. In addition, there are 4.0 positions funded by this grant reflected on the Middle Schools chart within this chapter.

FY 2026 OPERATING BUDGET

Middle Schools

Principal (P)	40.0
Assistant Principal (N)	94.0
Assistant School Administrator (N)	11.0
Coordinator (N)	7.0
IT Systems Specialist (18-25)	27.0
School Administrative Secretary (16)	40.0
School Financial Specialist (16)	40.0
Security Assistant (14)	101.5
School Secretary II (13)	44.0
School Secretary II, 10-month (13)	22.75
School Secretary I (12)	49.75

Other Support Positions	
Building Services (6-16)	420.0*
Food Services (6-16)	145.004*

Teacher Positions	
Content Specialist (B-D)	239.0
Content Specialist (B-D)	2.0**
Counselor (B-D)	128.0
Counselor, Resource (B-D)	34.0
Media Specialist (B-D)	40.0
Middle School Team Leader (B-D)	230.0
Middle School Team Leader (B-D)	2.0**
Social Worker (B-D)	17.0
Teacher (A-D)	1,397.6
Teacher, Academic Intervention (A-D)	25.6
Teacher, Alternative Programs (A-D)	28.8
Teacher, Focus (A-D)	40.8
Teacher, Special Programs (A-D)	10.4
Teacher, Staff Development (A-D)	24.0

Support Positions	
Parent Community Coordinator (20)	10.0
Media Services Technician (17)	1.0
Paraeducator (12-13)	24.125
Paraeducator, Special Programs (12-13)	24.5
Media Assistant (12)	25.875
Lunch Hour Aide (12)	12.875
Lunch Hour Aide (7)	3.5

CHAPTER 1 - 2 SCHOOLS

F.T.E. Positions 2,798.075

*In addition, this chart includes 565.004 positions from School Plant Operations and Food Services.

**Positions funded by the Title I, Part A grant.

FY 2026 OPERATING BUDGET

High Schools

Principal (Q)	25.0
Supervisor, Edison High School of Technology (O)	1.0
Coordinator (N)	4.0
Assistant Principal (NH)	107.0
Assistant Principal, Edison High School of Technology (N)	1.0
Assistant School Administrator (N)	5.0
School Business Administrator (I)	25.0
IT Systems Specialist (18-25)	26.0
School Administrative Secretary (16)	26.0
School Financial Specialist (16)	26.0
School Registrar (16)	25.0
Security Team Leader (16)	25.0
Security Assistant (14)	148.5
School Secretary II (13)	30.0
School Secretary II, 10-month (13)	39.0
School Secretary I (12)	82.0

Other Support Positions

Building Services (6-16)	280.0*
Food Services (6-16)	98.826*

Teacher Positions

Counselor (B-D)	198.0
Counselor, Other (B-D)	14.5
Counselor, Resource (B-D)	25.0
Instructional Specialist, Athletics (B-D)	25.0
Media Specialist (B-D)	25.0
Social Worker (B-D)	25.0
Instructor, JROTC (A-D)	5.0
Senior Instructor, JROTC (A-D)	5.0
Teacher (A-D)	2,245.8
Teacher, Academic Intervention (A-D)	23.8
Teacher, Alternative Programs (A-D)	19.4
Teacher, Career Preparation (A-D)	15.2
Teacher, Career Support (A-D)	12.8
Teacher, Focus (A-D)	48.4
Teacher, Resource (A-D)	212.0
Teacher, Special Programs (A-D)	29.4
Teacher, Staff Development (A-D)	15.6

Support Positions

Parent Community Coordinator (20)	9.0
Media Services Technician (17)	25.0
English Composition Assistant (16)	40.625
College/Career Information Coordinator (16)	26.0
Dual Enrollment Program Assistant (15)	12.5
Paraeducator (12-13)	65.875
Media Assistant (12)	29.875

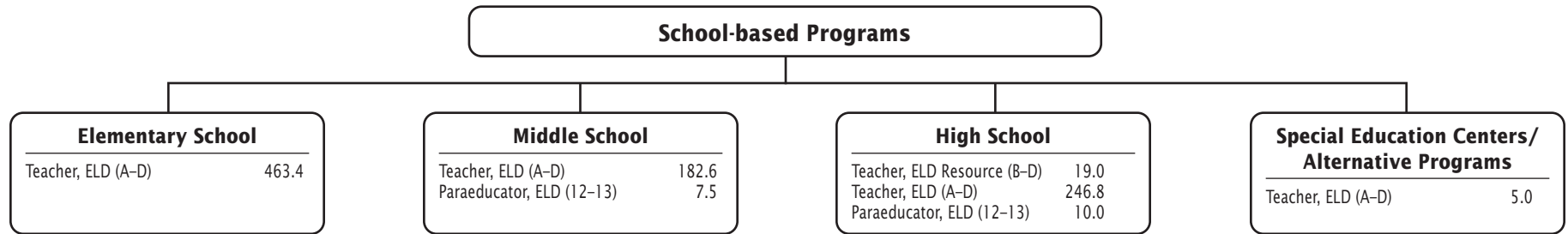
F.T.E. Positions 3,749.275

*In addition, this chart includes 378.826 positions from School Plant Operations and Food Services.

Alternative Education Programs

Principal (Q)	1.0
Assistant Principal (N)	3.0
Counselor, Other (B-D)	3.0
Psychologist (B-D)	1.0
Pupil Personnel Worker (B-D)	1.0
Social Worker (B-D)	3.0
Teacher, Alternative Programs (A-D)	18.0
Teacher, Special Education (A-D)	1.0
Teacher, Staff Development (A-D)	1.0
Special School Administrative Secretary (17)	1.0
School Registrar (16)	1.0
Security Assistant (14)	3.0
Paraeducator (12-13)	6.125
School Secretary I (12)	3.0

English Learners and Multilingual Education School-based Programs



Special Education Services—Overview

School-based Programs

**Department of Special Education
Prekindergarten and Related Services**

- Services for Deaf and Hard of Hearing
- Services for Visually Impaired
- Department of Special Education
Prekindergarten and Related Services*
- Speech and Language Services*
- Child Find/
Preschool Education Programs*

Parentally Placed
Private School Students*

**Department of
Special Education Services**

- Adapted Physical Education
- Autism Services
- Curriculum and Intervention Support
- Extensions
- Home School Model
- Hours-based Staffing
- Twice Exceptional Services
- Learning and Academic Disabilities*
- Elementary Learning Centers
- Learning for Independence Services*
- School/Community-Based Services
- Social Emotional Special Education
Services/Bridge Services*
- Transition Services

- Special Schools/Centers***
- Longview School
 - Carl Sandburg Learning Center
 - Stephen Knolls School
 - John L. Gildner Regional Institute for
Children & Adolescents (JLG-RICA)
 - Rock Terrace School

**Department of Special Education Systems
and Management**

Itinerant Paraeducator Services

CHAPTER 1 - 6 SCHOOLS

F.T.E. Positions 5,061.8125

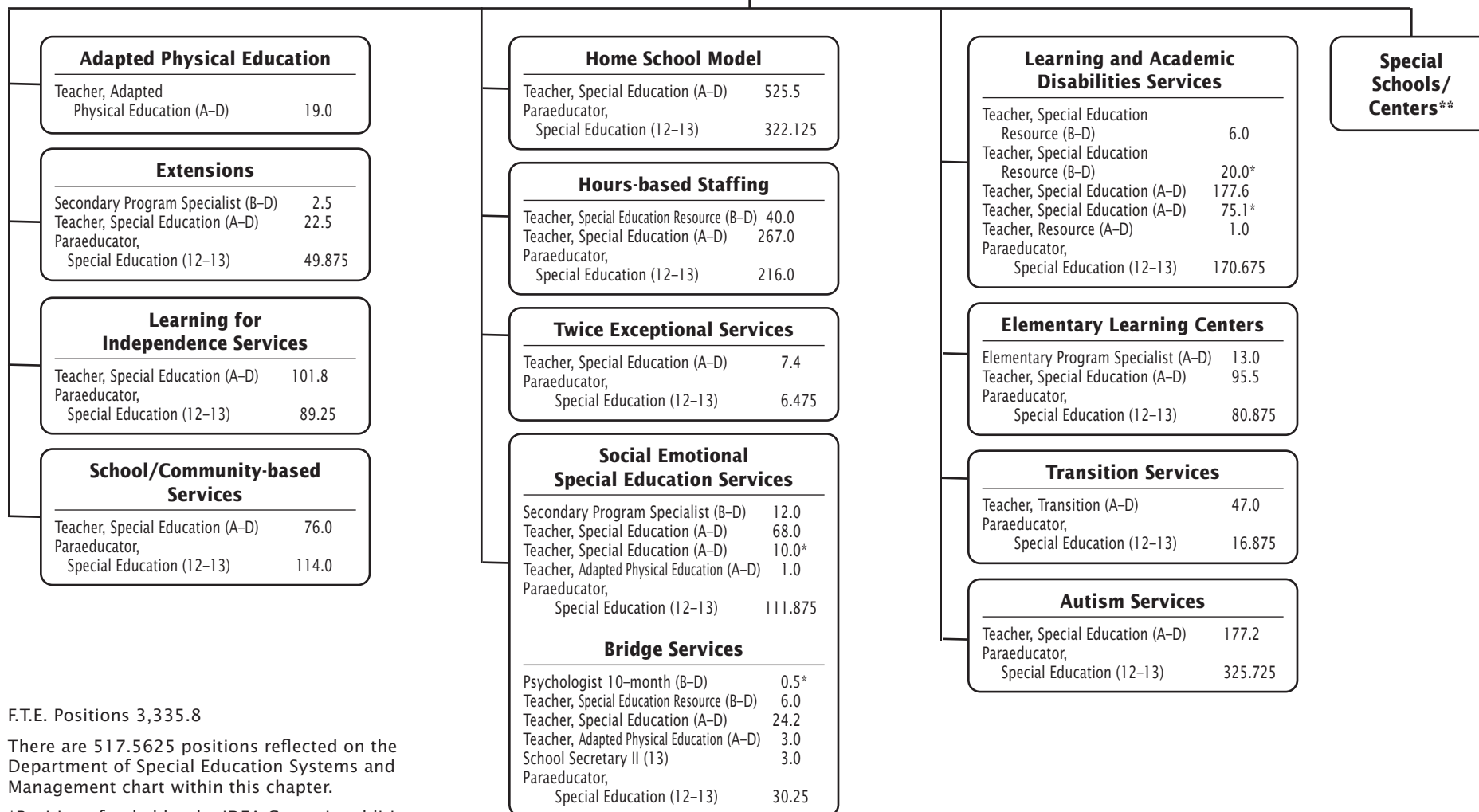
*Programs and Services include positions funded by Grant—Individuals with Disabilities Education Act (IDEA)

FY 2026 OPERATING BUDGET

Department of Special Education Services

CHAPTER 1 - 7 SCHOOLS

School-based Programs



F.T.E. Positions 3,335.8

There are 517.5625 positions reflected on the Department of Special Education Systems and Management chart within this chapter.

*Positions funded by the IDEA Grant. In addition, there are 25.5 positions reflected on the Special Schools/Centers chart and 16.95 positions reflected on the Department of Special Education Systems and Management chart.

Special Schools/Centers*

Longview School	
Principal (P)	1.0
Media Specialist (B-D)	0.5
Teacher, Special Education Resource (B-D)	1.0
Teacher, Special Education (A-D)	0.5
Teacher, Special Education (A-D)	8.5*
Teacher, Staff Development (A-D)	1.0
Teacher, Adapted Physical Education (A-D)	1.8
Teacher, Art (A-D)	0.5
Teacher, General Music (A-D)	0.5
Special School Administrative Secretary (17)	1.0
Paraeducator, Special Education (12-13)	17.5
School Secretary I (12)	0.5

Carl Sandburg Learning Center	
Principal (P)	1.0
Media Specialist (B-D)	0.5
Psychologist (B-D)	1.0
Secondary Program Specialist (B-D)	1.0
Social Worker 10-month (B-D)	1.0
Teacher, Reading Specialist (B-D)	0.5
Teacher, Special Education (A-D)	12.0
Teacher, Special Education (A-D)	2.5*
Teacher, Staff Development (A-D)	1.0
Teacher, Adapted Physical Education (A-D)	1.0
Teacher, Art (A-D)	0.7
Teacher, General Music (A-D)	0.5
Special School Administrative Secretary (17)	1.0
Paraeducator, Special Education (12-13)	23.625
Media Assistant (12)	0.5
School Secretary I (12)	0.5

Stephen Knolls School	
Principal (P)	1.0
Media Specialist (B-D)	0.5
Teacher, Special Education (A-D)	7.7
Teacher, Staff Development (A-D)	1.0
Teacher, Adapted Physical Education (A-D)	1.0
Teacher, Art (A-D)	0.5
Teacher, General Music (A-D)	0.5
Special School Administrative Secretary (17)	1.0
Paraeducator, Special Education (12-13)	12.25
School Secretary I (12)	0.5
Lunch Hour Aide (7)	0.875

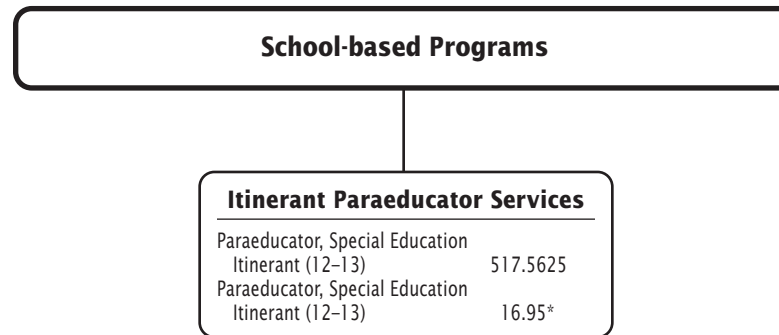
John L. Gildner Regional Institute for Children and Adolescents (JLG-RICA)	
Principal (Q)	1.0
Assistant Principal (N)	1.0
Counselor (B-D)	0.5
Media Specialist (B-D)	1.0
Secondary Program Specialist (B-D)	2.0
Teacher, High (A-D)	0.5
Teacher, Special Education (A-D)	14.5*
Teacher, Staff Development (A-D)	1.0
Teacher, Transition (A-D)	1.0
Teacher, Adapted Physical Education (A-D)	1.4
Teacher, Art (A-D)	1.0
Teacher, General Music (A-D)	0.6
Special School Administrative Secretary (17)	1.0
Security Assistant (14)	1.0
School Secretary II (13)	1.0
Paraeducator, Special Education (12-13)	13.125
Media Assistant (12)	0.5

Rock Terrace School	
Principal (P)	1.0
Assistant Principal (N)	1.0
Counselor (B-D)	0.5
Media Specialist (B-D)	0.5
Teacher, Reading Specialist (B-D)	0.5
Teacher, Special Education Resource (B-D)	1.0
Teacher, Special Education (A-D)	15.0
Teacher, Staff Development (A-D)	1.0
Teacher, Adapted Physical Education (A-D)	1.0
Teacher, Art (A-D)	0.6
Teacher, General Music (A-D)	0.6
Special School Administrative Secretary (17)	1.0
Security Assistant (14)	1.0
School Secretary II (10-mth) (13)	1.0
Paraeducator, Special Education (12-13)	14.0
Media Assistant (12)	0.5

F.T.E. Positions 191.775

*Positions funded by the IDEA grant.

Department of Special Education Systems and Management

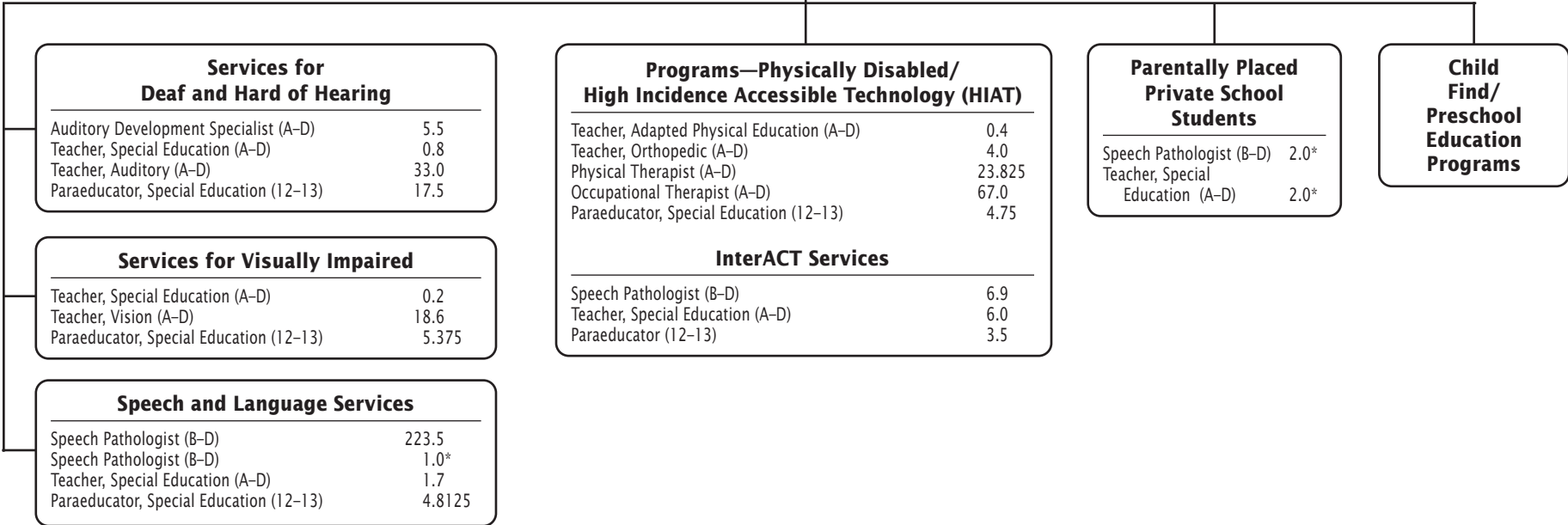


F.T.E. Positions 534.5125

*Positions funded by the IDEA Grant.

Department of Special Education Prekindergarten and Related Services

School-based Programs



CHAPTER 1 - 10 SCHOOLS

F.T.E. Positions 432.3625

*Position funded by the IDEA Grant.

FY 2026 OPERATING BUDGET

Chapter 2

School Leadership and Improvement

Division of School Leadership and Improvement

Division of School Leadership

Department of Athletics

Department of Early Childhood, Federal and Special Programs

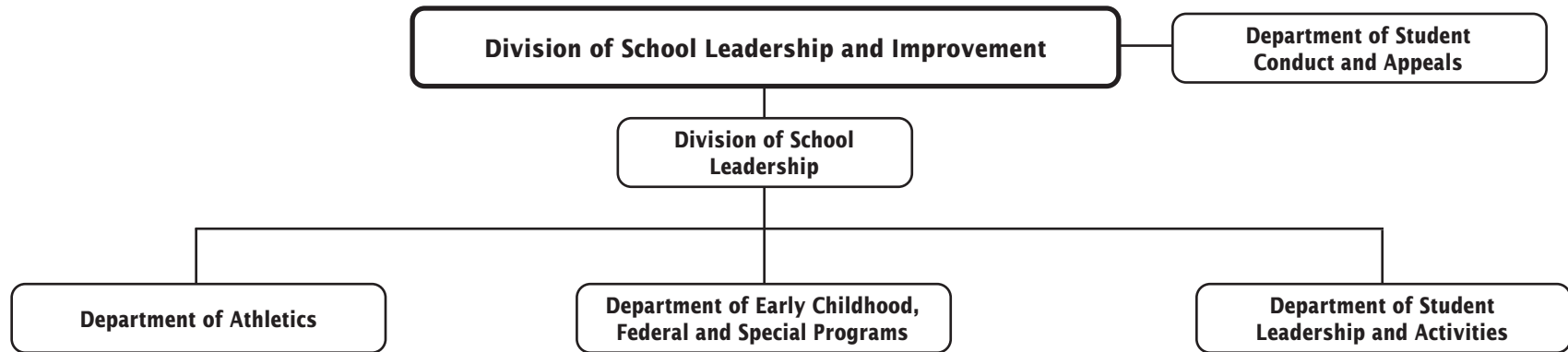
Department of Student Conduct and Appeals

Department of Student Leadership and Activities

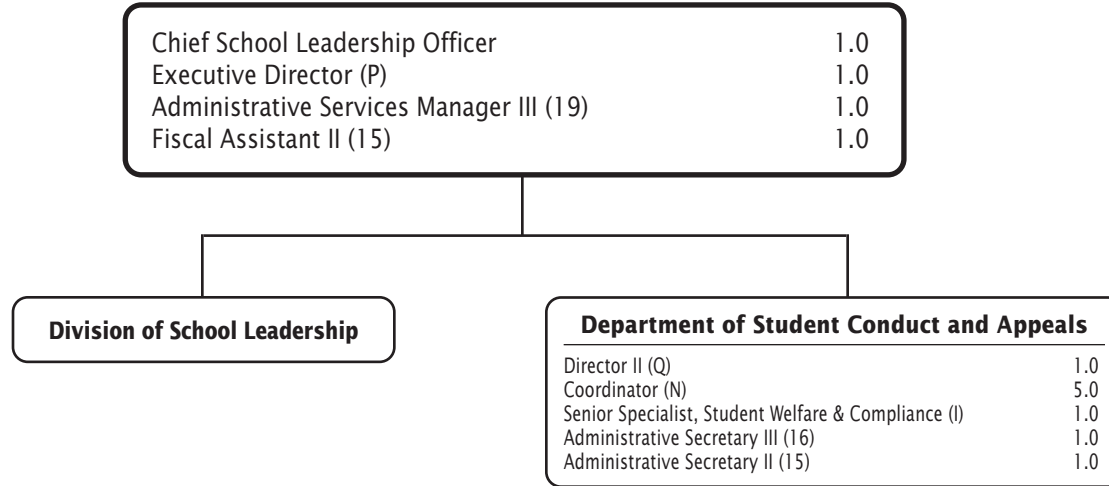


School Leadership and Improvement

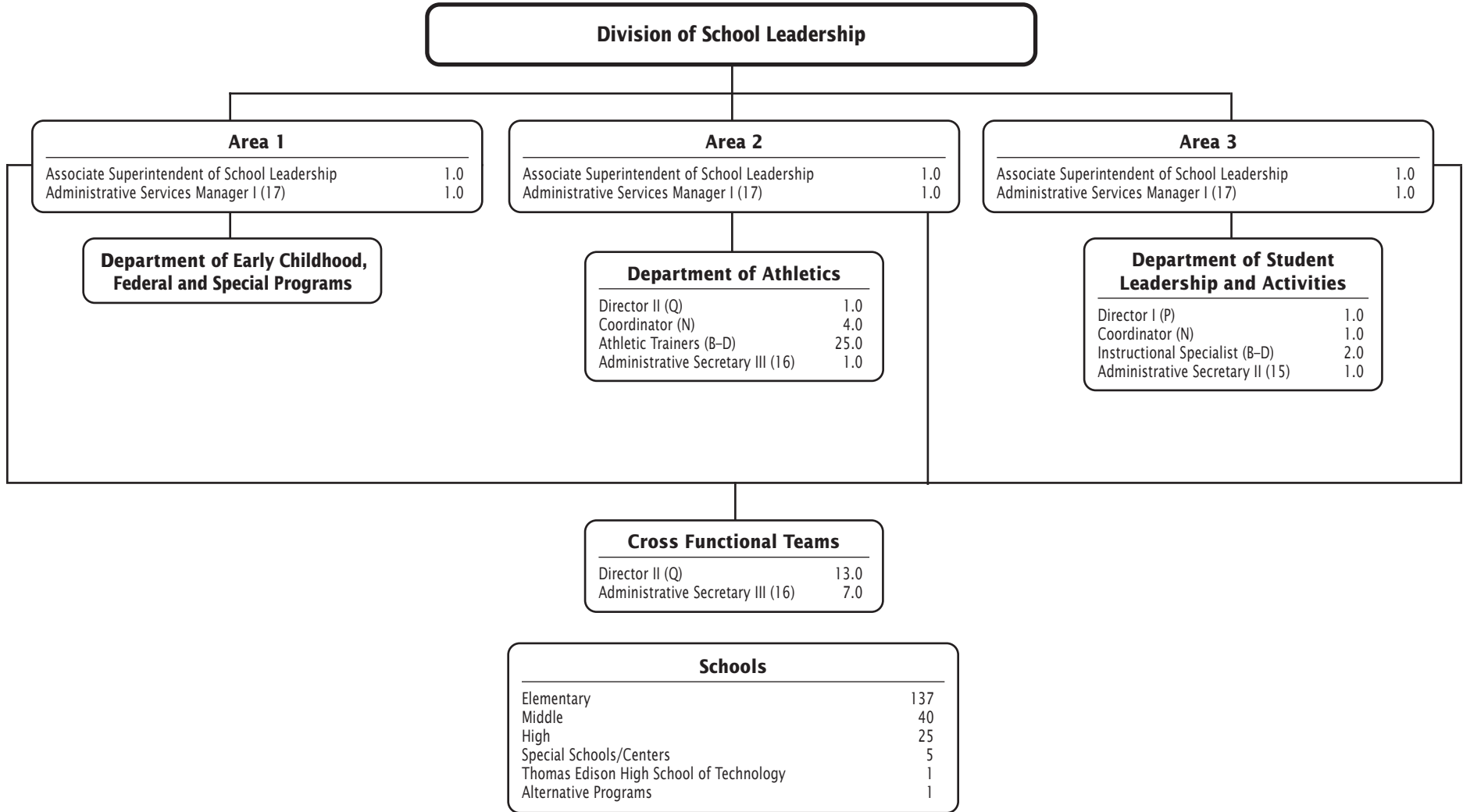
School Leadership and Improvement—Overview



Division of School Leadership and Improvement



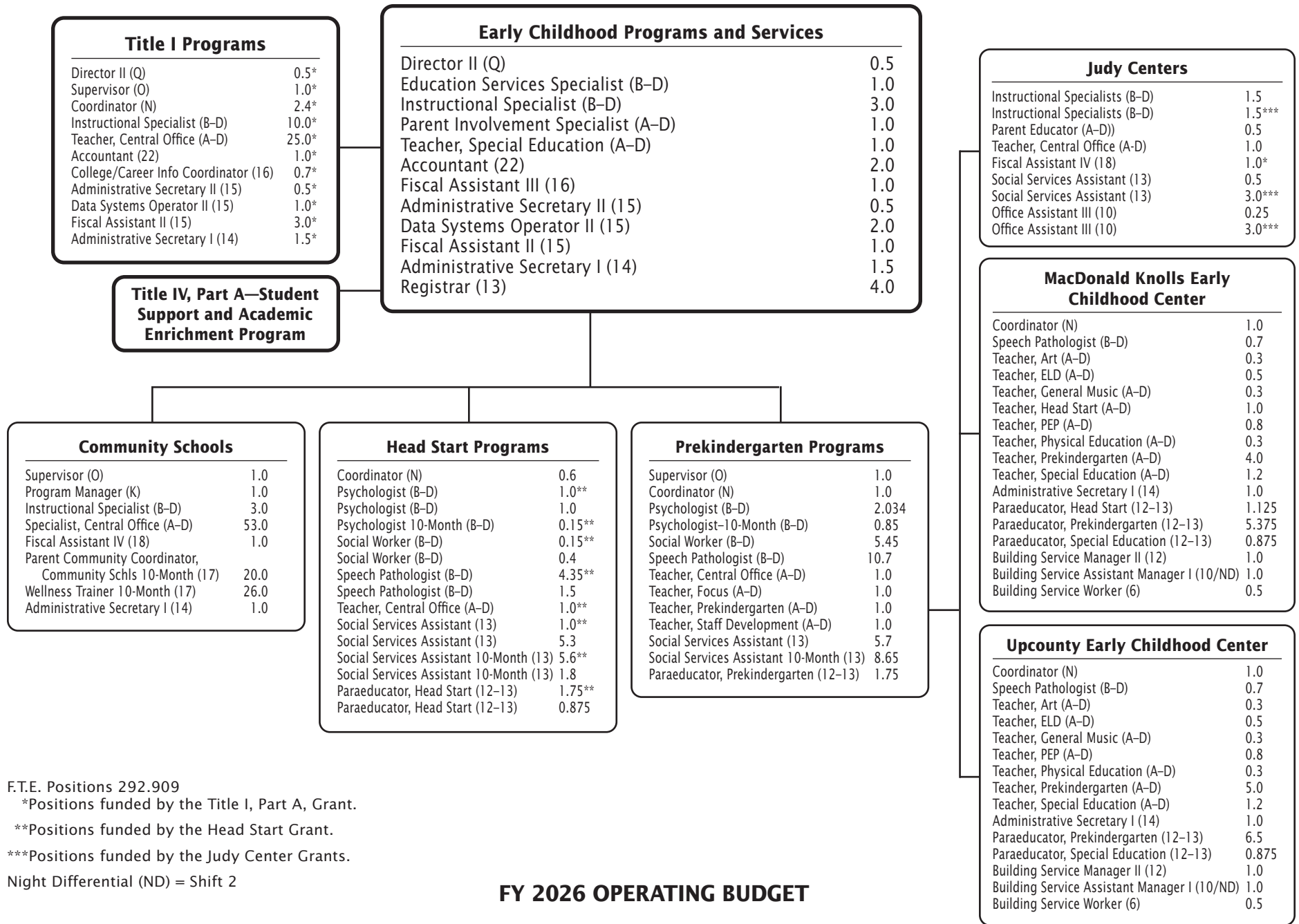
Division of School Leadership



F.T.E. Positions 62.0

FY 2026 OPERATING BUDGET

Department of Early Childhood, Federal and Special Programs



F.T.E. Positions 292.909

*Positions funded by the Title I, Part A, Grant.

**Positions funded by the Head Start Grant.

***Positions funded by the Judy Center Grants.

Night Differential (ND) = Shift 2

Chapter 3

Teaching and Learning

Division of Teaching and Learning

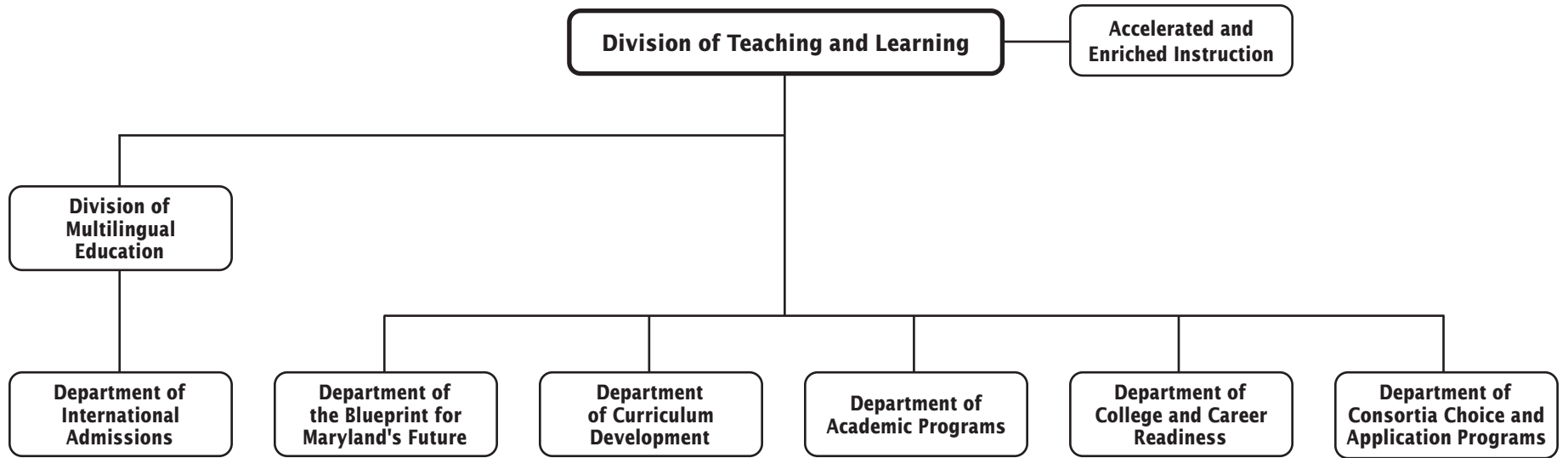
- Department of the Blueprint for Maryland's Future
- Department of Consortia Choice and Application Programs
- Department of Academic Programs
- Department of Curriculum Development
- Department of College and Career Readiness

Division of Multilingual Education

- Department of International Admissions



Teaching and Learning—Overview



CHAPTER 3 - 1 TEACHING AND LEARNING

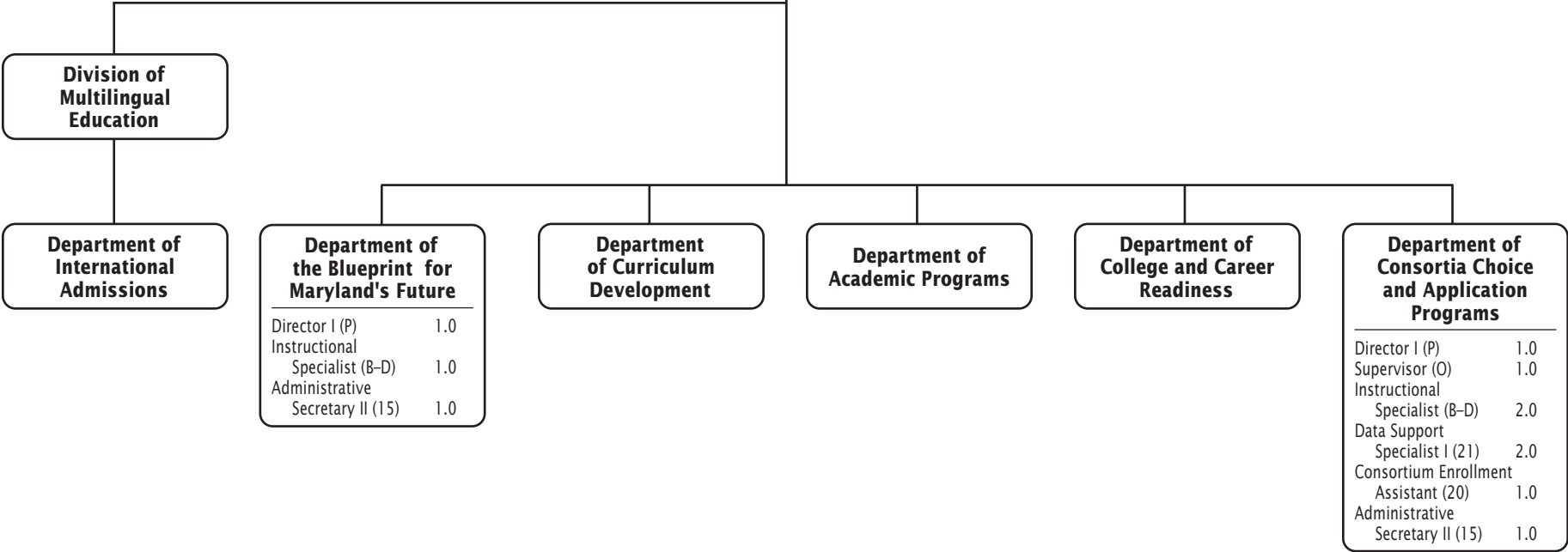
F.T.E. Positions 279.625

FY 2026 OPERATING BUDGET

Division of Teaching and Learning

Chief Academic Officer	1.0
Executive Director (P)	1.0
Coordinator (N)	1.0
Instructional Specialist (B-D)	1.0
Fiscal Specialist II (25)	1.0
Administrative Services Manager III (19)	1.0

Accelerated and Enriched Instruction	
Supervisor (O)	1.0
Instructional Specialist (B-D)	5.5
Administrative Secretary II (15)	1.0



Department of Academic Programs

Director I (P)	1.0
Instructional Specialist (B-D)	1.0
Administrative Secretary III (16)	1.0

Interim Instructional Services and Online Learning	
Supervisor (O)	1.0
Instructional Specialist (B-D)	3.0
Teacher, High (A-D)	5.0
Teacher, Special Education (A-D)	1.0
Communications Specialist/ Web Producer (21)	1.0
Online Course Registrar (16)	1.0
Administrative Secretary I (14)	2.0

Online, Blended, and Distance Learning	
Coordinator (N)	1.0
Counselor (B-D)	1.0
Teacher, ELD (A-D)	2.0
Teacher, Elementary (A-D)	5.0
Teacher, Middle (A-D)	5.0
Teacher, High (A-D)	5.0
Teacher, Special Education (A-D)	3.0

CREA Plus	
Coordinator (N)	1.0
Social Worker (B-D)	1.0
Teacher, Career Support (A-D)	3.0
Teacher, ELD (A-D)	6.0
Teacher, Special Education (A-D)	1.0
EML Therapeutic Counselor (25)	1.0
Intake Specialist (17)	1.0
Paraeducator, (12-13/ND)	4.875

Outdoor Environmental Education Programs	
Supervisor (O)	1.0
Teacher, Middle (A-D)	5.0
Administrative Secretary II (15)	1.0

Summer and Out-of-School Time	
Coordinator (N)	1.0
Instructional Specialist (B-D)	2.0
School Registrar (16)	1.0

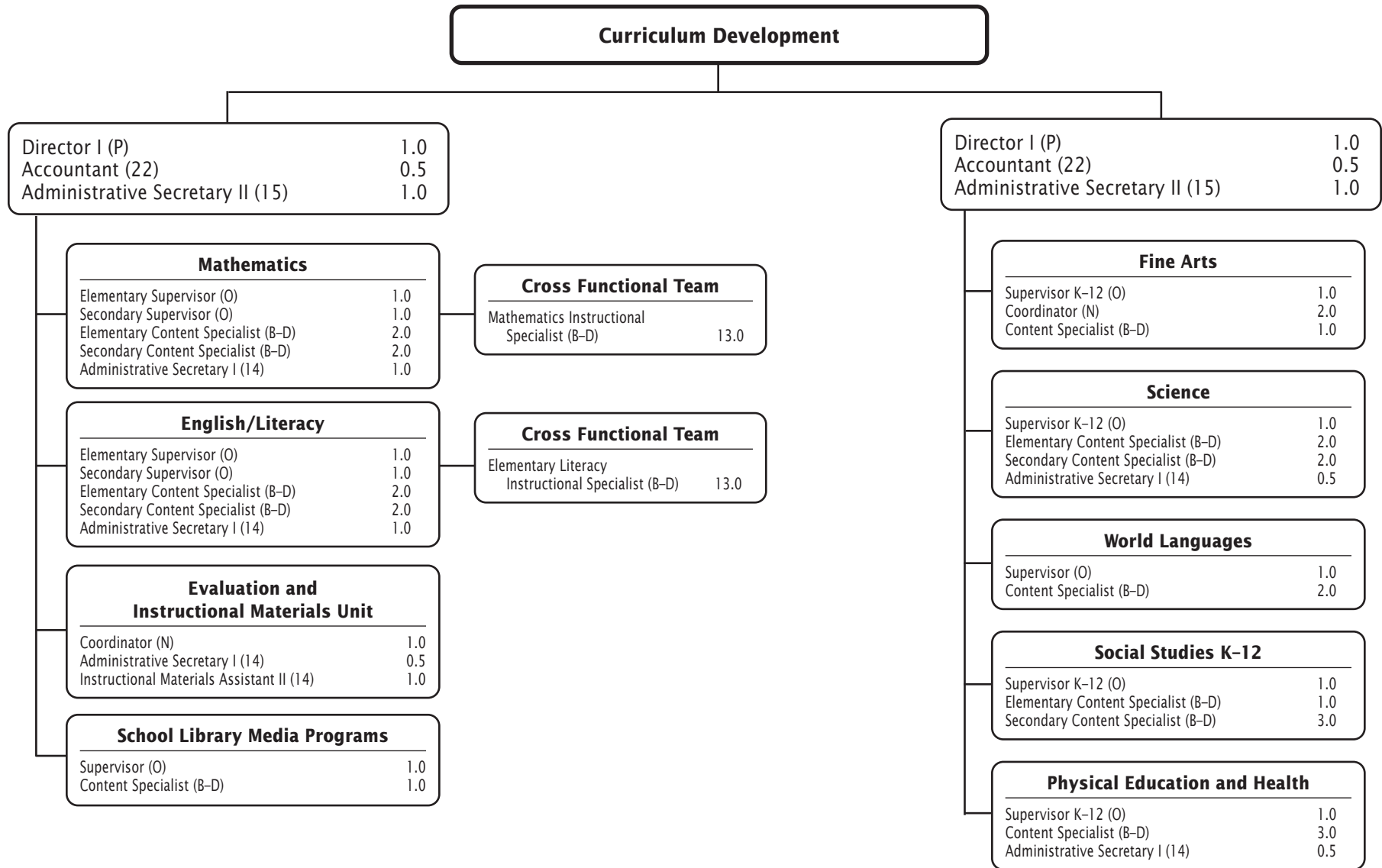
CHAPTER 3 - 3 TEACHING AND LEARNING

F.T.E. Positions 68.875

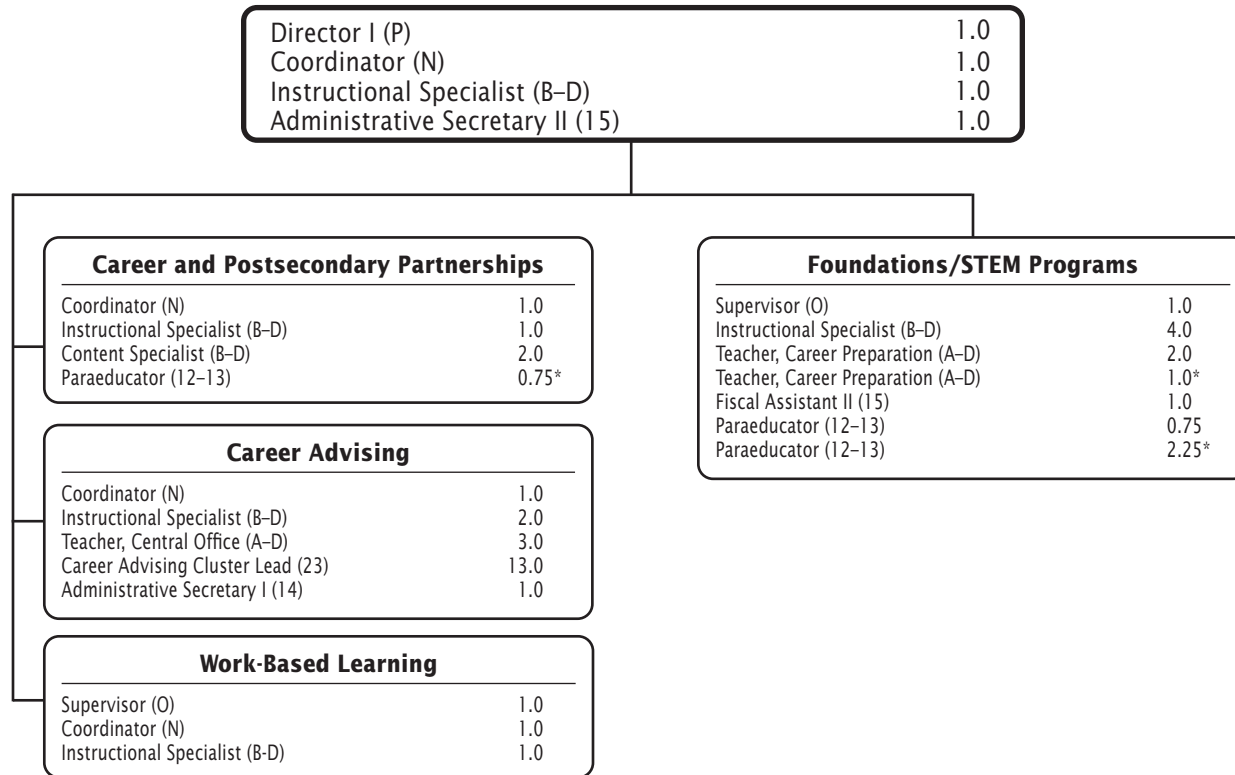
Night Differential (ND) = Shift 2

FY 2026 OPERATING BUDGET

Department of Curriculum Development



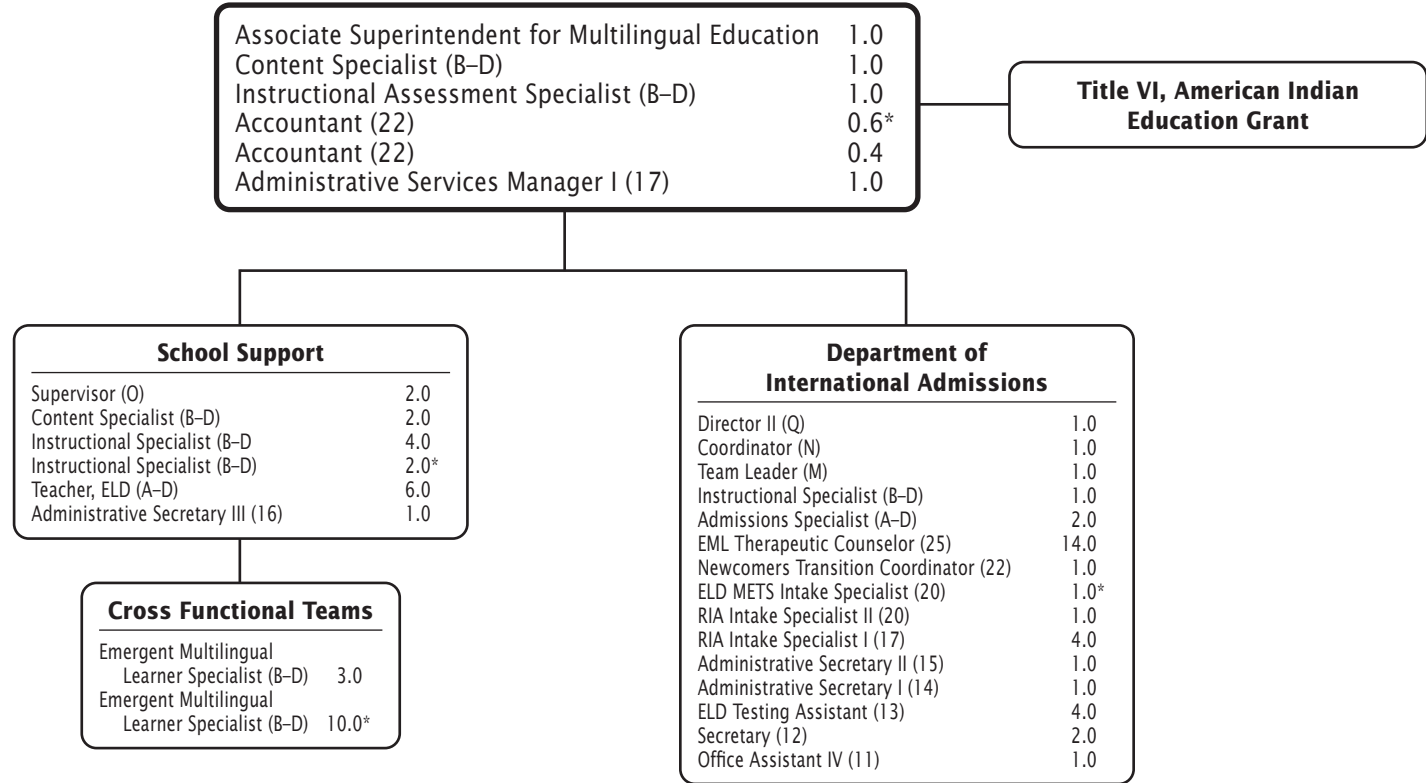
Department of College and Career Readiness



F.T.E. Positions 43.75

*Positions funded by the Carl D. Perkins Career and Technical Education Improvement Programs Grant.

Division of Multilingual Education



F.T.E. Positions 71.0

*Positions funded by the Title III, English Language Acquisition Grant.

Chapter 4

Specialized Support Services

Division of Specialized Support Services

Division of Special Education

Department of Special Education Compliance

Department of Special Education Services

Department of Special Education Systems
and Management

Department of Special Education Prekindergarten
and Related Services

Department of Student Well-being

Department of Student Support and Attendance Services

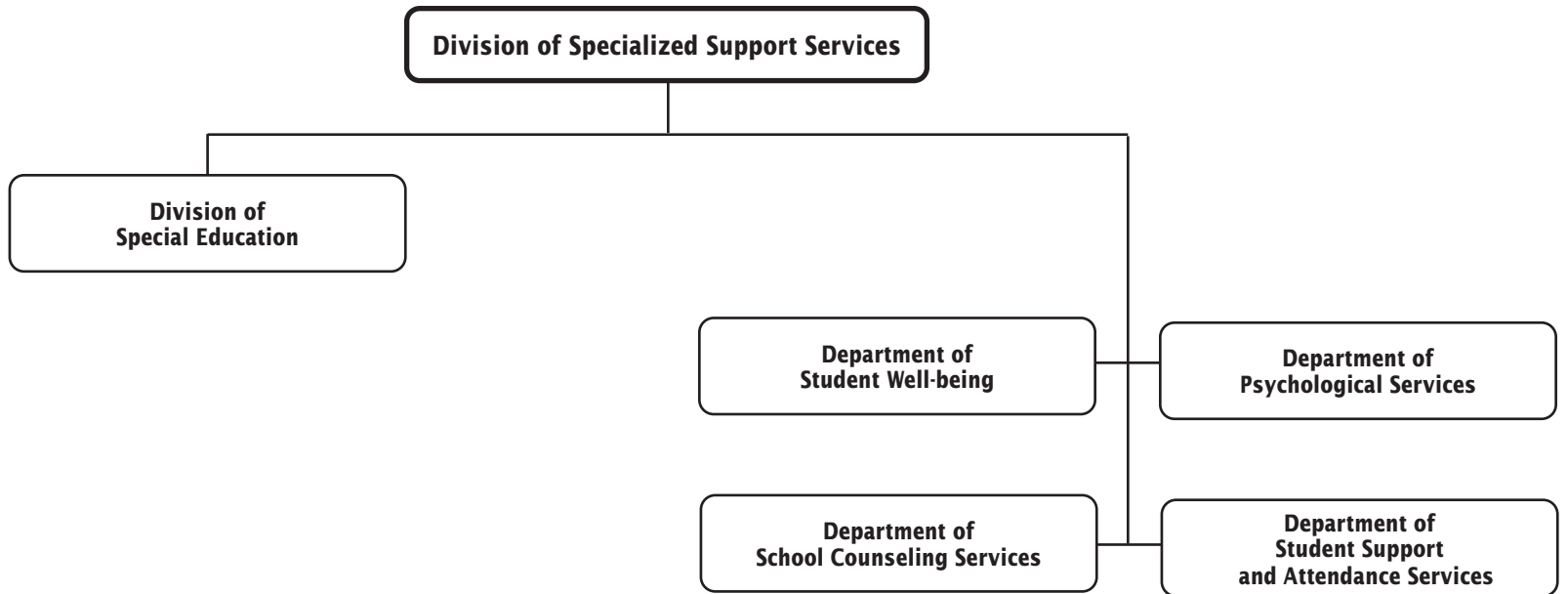
Department of Psychological Services

Department of School Counseling Services

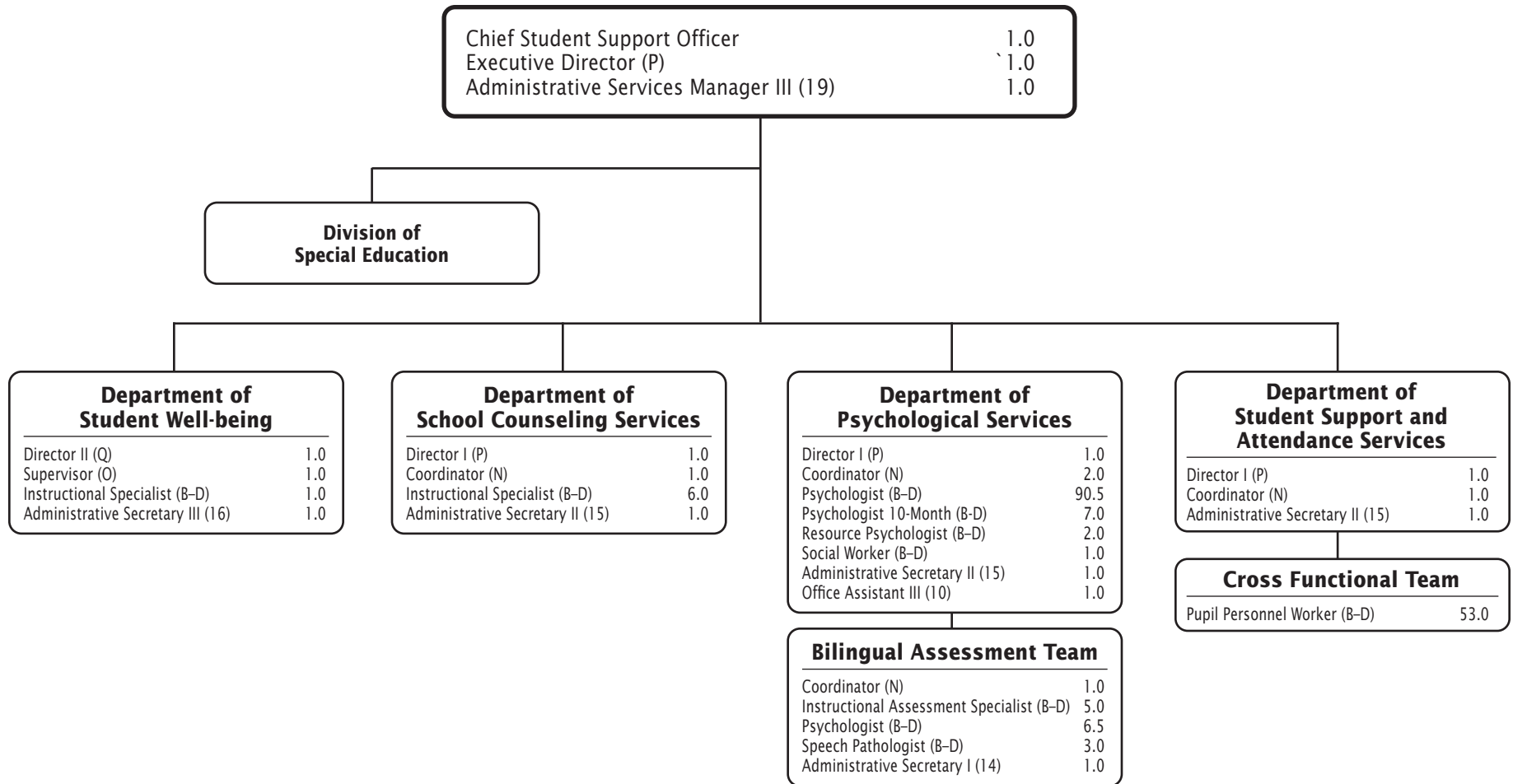


Specialized Support Services

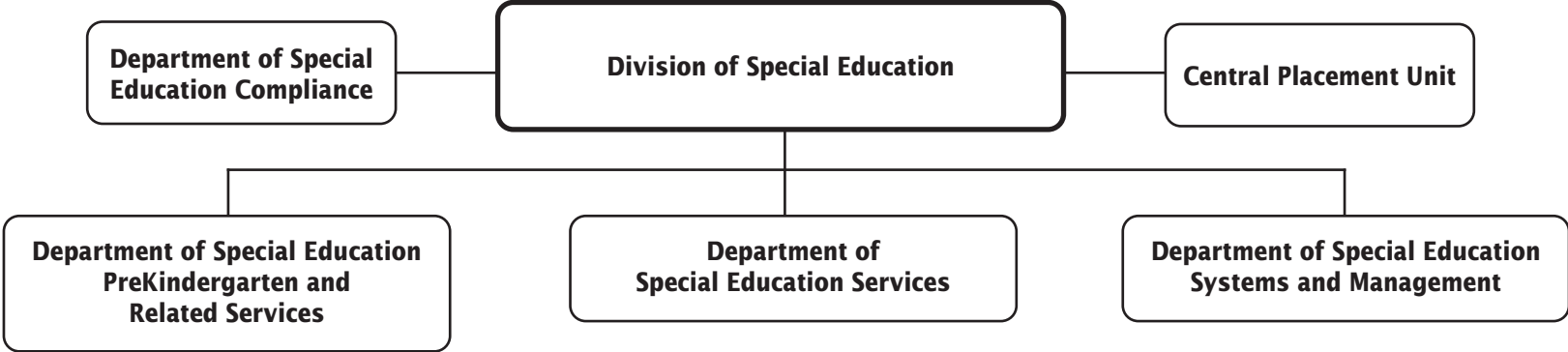
Specialized Support Services—Overview



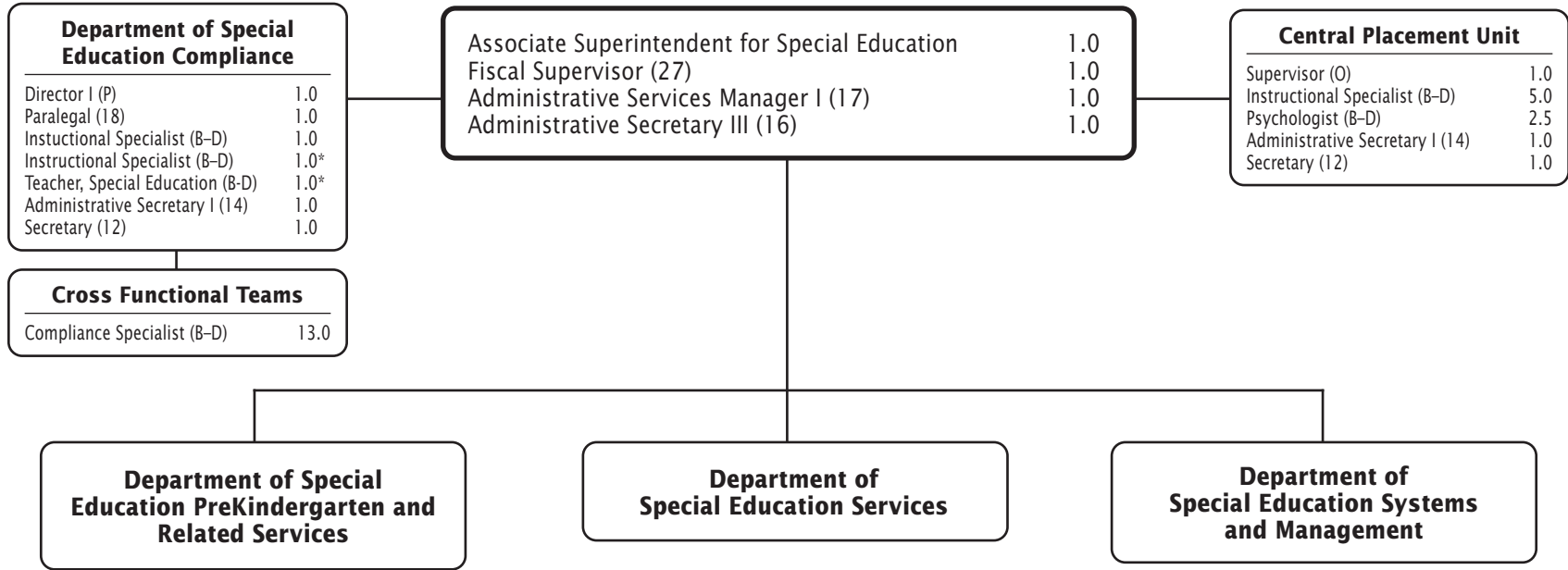
Division of Specialized Support Services



Special Education—Overview



Division of Special Education



F.T.E. Positions 34.5

*Positions funded by the by the IDEA grant.

Department of Special Education Services

Director I (P)	1.0
Instructional Specialist (B-D)	1.0*
Administrative Secretary III (16)	0.5

Curriculum and Intervention Support Team	
Supervisor (O)	2.0
Coordinator (N)	1.0
Psychologist (B-D)	5.5*
Psychologist 10-month (B-D)	1.0*
Administrative Secretary II (15)	1.0

Cross Functional Teams	
Special Education Coordinators (N)	13.0

Social Emotional Special Education Services	
Supervisor (O)	1.0
Specialist, Emotional Disabilities (B-D)	1.0
Social Worker 10-month (B-D)	2.0
Social Worker 10-month (B-D)	18.0*
Administrative Secretary I (14)	1.0

Bridge Program	
Psychologist (B-D)	1.0
Social Worker 10-month (B-D)	5.0

Extensions	
Supervisor (O)	1.0
Instructional Specialist (B-D)	3.0*
Social Worker 10-month (B-D)	2.0

Transition Services	
Supervisor (O)	1.0
Instructional Specialist (B-D)	2.0
Secondary Program Specialist (B-D)	1.0
Administrative Secretary I (14)	1.0
Paraeducator, Special Education (12-13)	4.0

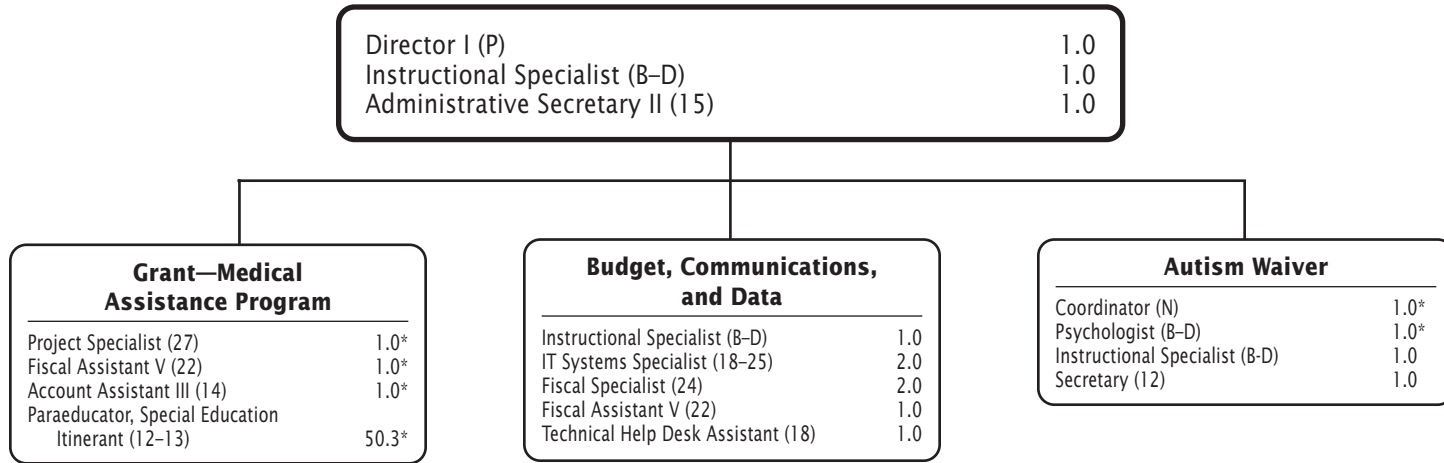
Autism Services	
Supervisor (O)	1.0
Instructional Specialist (B-D)	3.0
Psychologist (B-D)	4.0
Psychologist 10-month (B-D)	1.0
Elementary Program Specialist (A-D)	2.7
Teacher, Special Education (A-D)	2.7
Administrative Secretary I (14)	1.0

CHAPTER 4 - 5 SPECIALIZED SUPPORT SERVICES

F.T.E. Positions 85.4

*Positions funded by the IDEA grant from the Department of Special Education Systems and Management within this chapter, are reflected on this chart.

Department of Special Education Systems and Management



F.T.E. Positions 67.3

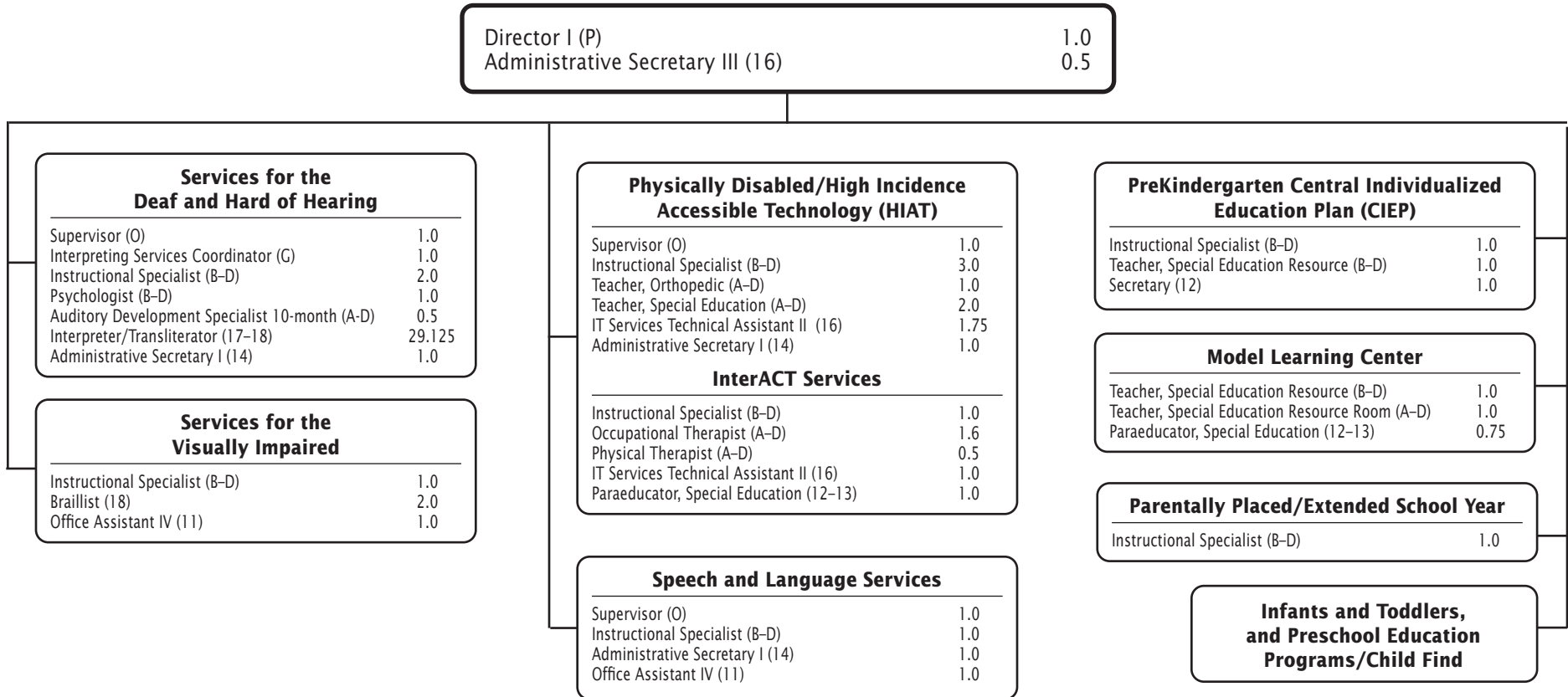
*Positions funded by the Medical Assistance Program Grant.

In addition, 30.5 positions funded by the IDEA grant are reflected on the organizational charts with this chapter as follows; 28.5 positions in the Department of Special Education Services, and 2.0 positions in the Division of Special Education chart.

FY 2026 OPERATING BUDGET

Department of Special Education PreKindergarten and Related Services

CHAPTER 4 - 7 SPECIALIZED SUPPORT SERVICES



F.T.E. Positions 66.725

FY 2026 OPERATING BUDGET

Infants and Toddlers and Preschool Education Programs

Child Find	
Supervisor (O)	1.0
Instructional Specialist (B-D)	2.0
Administrative Secretary I (14)	1.0
Program Secretary (13)	1.0

Infants and Toddlers Program	
Coordinator (N)	5.0
Speech Pathologist (B-D)	82.0
Elementary Program Specialist (A-D)	0.8
Elementary Program Specialist (A-D)	2.2*
Occupational Therapist (A-D)	25.0
Occupational Therapist (A-D)	1.0*
Physical Therapist (A-D)	35.6
Physical Therapist (A-D)	1.0*
Teacher, Auditory (A-D)	3.0
Teacher, Infants and Toddlers (A-D)	77.9022
Teacher, Infants and Toddlers (A-D)	1.2*
Teacher, Vision (A-D)	2.5
Administrative Secretary I (14)	5.0
Paraeducator, Special Education (12-13)	37.825

Single Point of Entry for Identification of Birth to Kindergarten/DESC	
Instructional Specialist (B-D)	3.0
Psychologist (B-D)	2.0
Speech Pathologist (B-D)	3.0
Occupational Therapist (A-D)	3.0
Program Secretary (13)	2.0

Preschool Education Programs (PEP) Office	
Coordinator (N)	1.0
Instructional Specialist (B-D)	1.0
Psychologist (B-D)	3.0
Elementary Program Specialist (A-D)	3.0
Teacher, Special Education (A-D)	2.0
Administrative Secretary I (14)	1.0

CHAPTER 4 - 8 SPECIALIZED SUPPORT SERVICES

F.T.E. Positions 309.0272

*Positions funded by the Montgomery County Infants and Toddlers Program Grant.

Chapter 5

Equity and Organizational Development

Division of Equity and Organizational Development

Department of Systemwide Equity

Department of Professional Learning

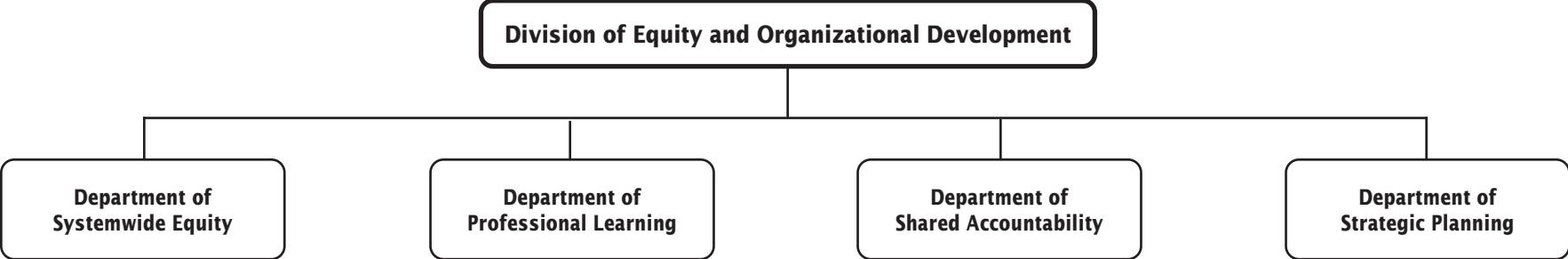
Department of Strategic Planning

Department of Shared Accountability



Equity and Organizational Development

Equity and Organizational Development—Overview



Division of Equity and Organizational Development

Chief Equity and Development Officer	1.0
Fiscal Specialist II (25)	1.0
Administrative Services Manager III (19)	1.0

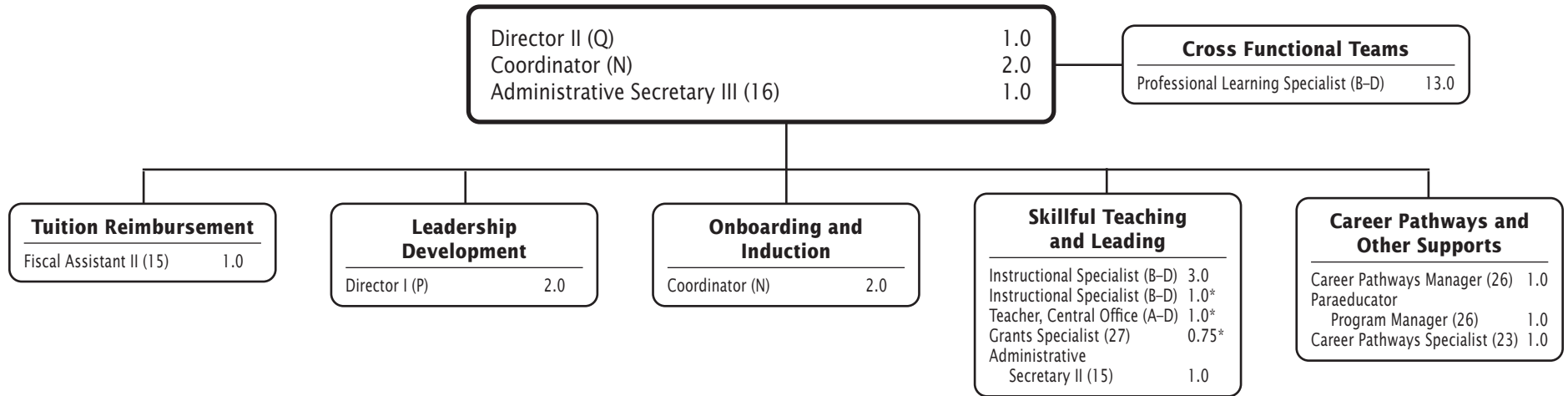
Department of Systemwide Equity

Director II (Q)	1.0
Instructional Specialist (B-D)	5.0
Instructional Specialist (B-D)	1.0*
Administrative Secretary III (16)	1.0

F.T.E. Positions 8.0

*Positions funded by the Title IV, Student Support and Academic Enrichment Grant

Department of Professional Learning



F.T.E. Positions 32.75

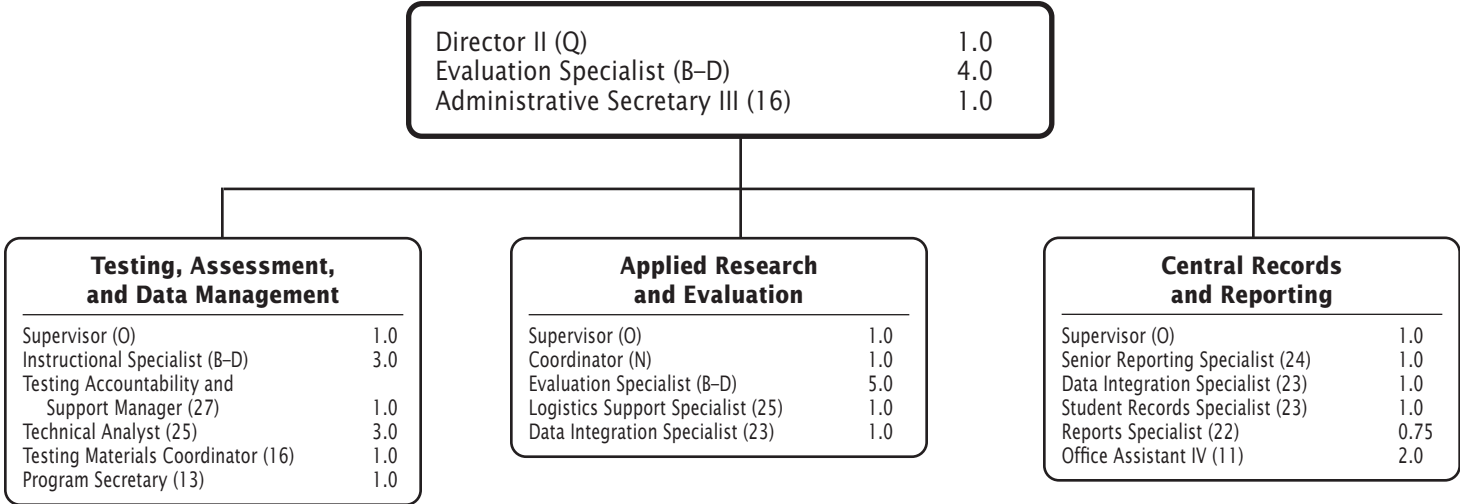
*Positions funded by the Title II, Part A Supporting Effective Instruction Grant

In addition, 19.0 positions funded by the Title II, Part A Supporting Effective Instruction Grant are reflected on the Department of Human Resources Information Systems and Evaluation organizational chart in Chapter 9, Human Resources and Talent Management.

Department of Strategic Planning

Director I (P)	1.0
Team Leader (M)	1.0
Administrative Secretary II (15)	1.0

Department of Shared Accountability



Chapter 6

Technology Services

Division of Technology Services

Department of Business Information Systems

Department of Cybersecurity and Infrastructure

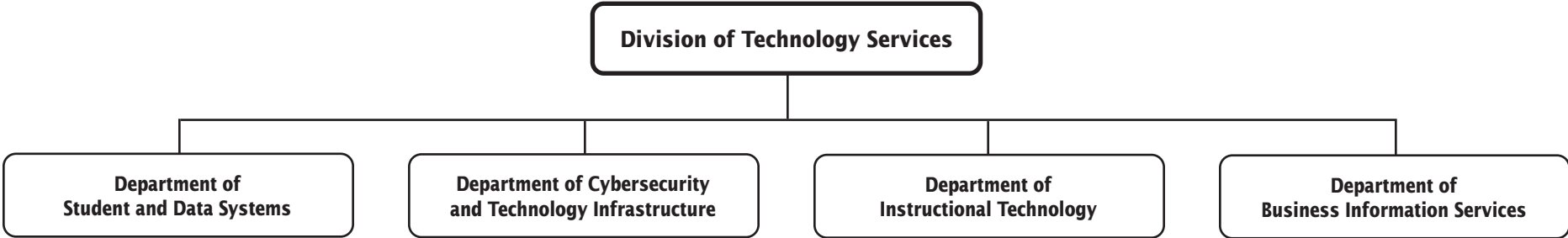
Department of Student and Data Systems

Department of Instructional Technology



Technology Services

Technology Services—Overview



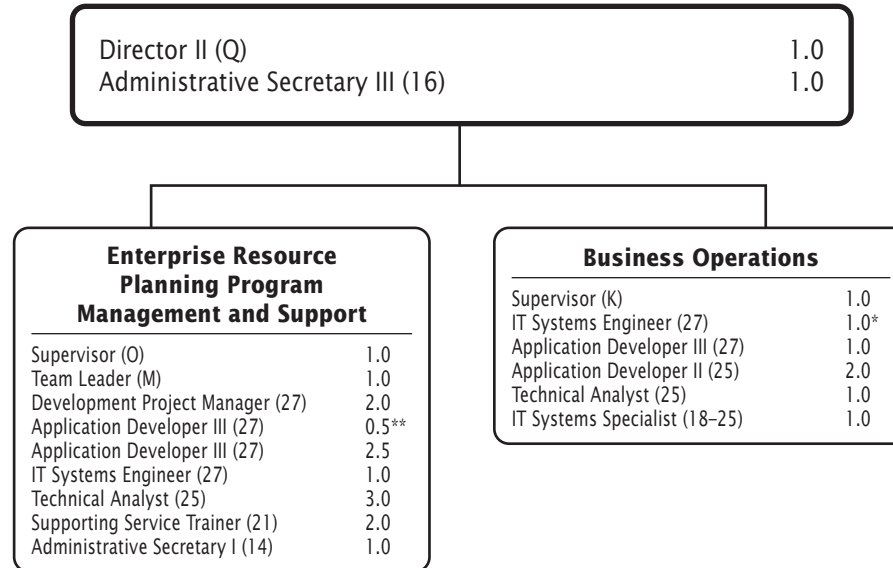
F.T.E. Positions 140.5

In addition, there are 22.5 positions funded by the Capital Improvements Program Budget and a 0.5 position funded by the Employee Benefits Trust Fund.

Division of Technology Services

Chief Technology Officer	1.0
Fiscal Specialist II (25)	1.0
Administrative Services Manager III (19)	1.0

Department of Business Information Services

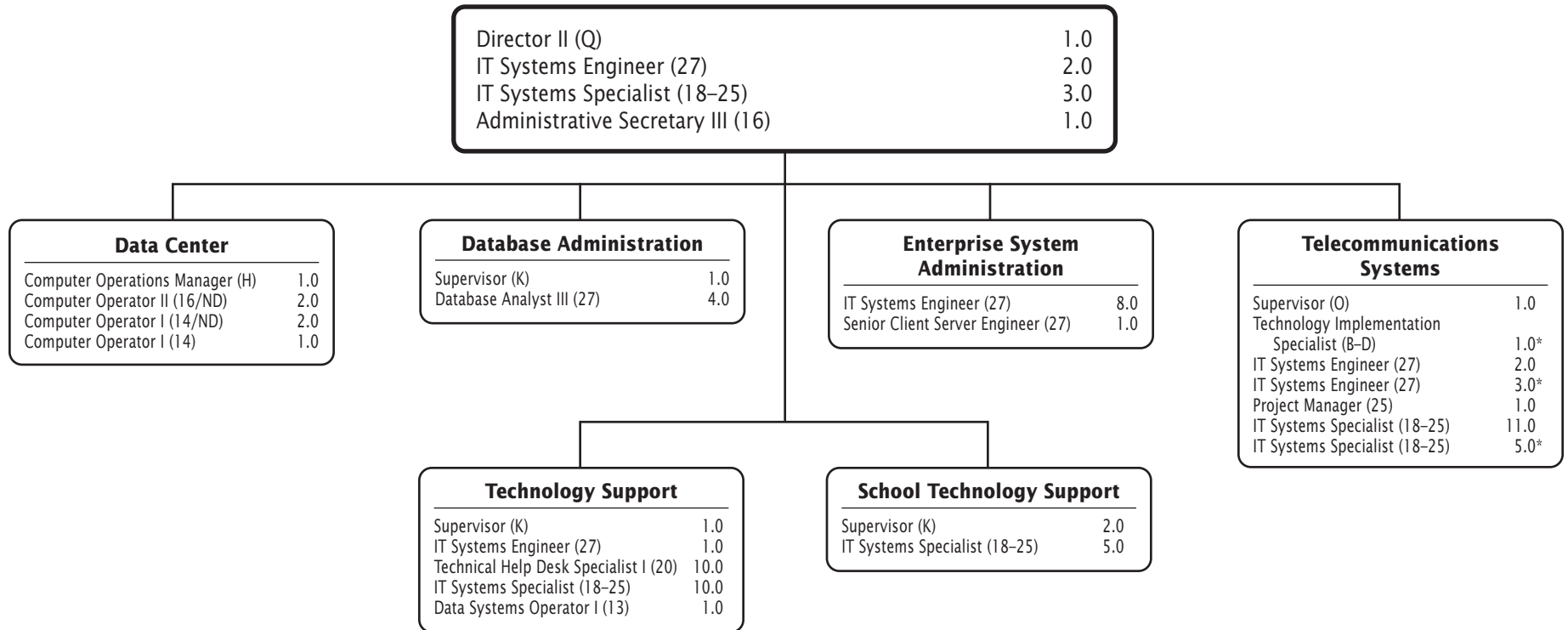


F.T.E. Positions 23.0

*This chart includes a position funded by the Capital Improvements Program Budget.

**This chart includes a position funded by the Employee Benefits Trust Fund.

Department of Cybersecurity and Technology Infrastructure

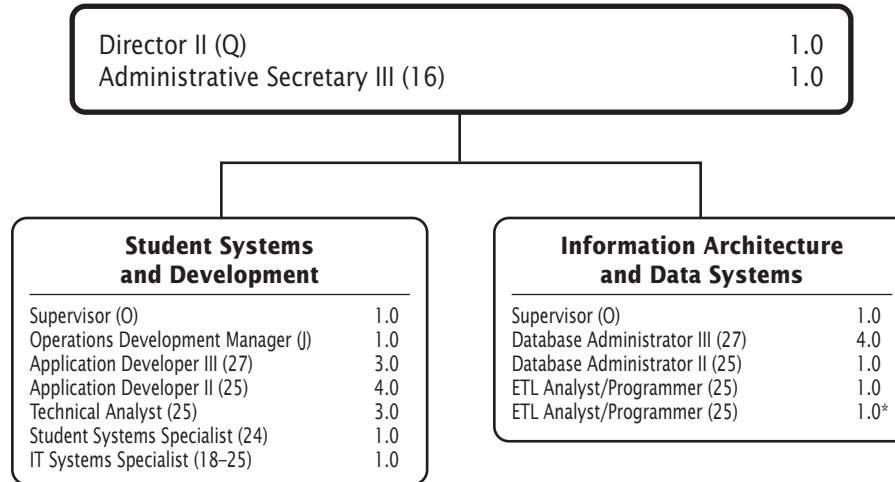


F.T.E. Positions 81.0

*This chart includes positions funded by the Capital Improvements Program Budget.

Night Differential (ND) = Shifts 2 and 3

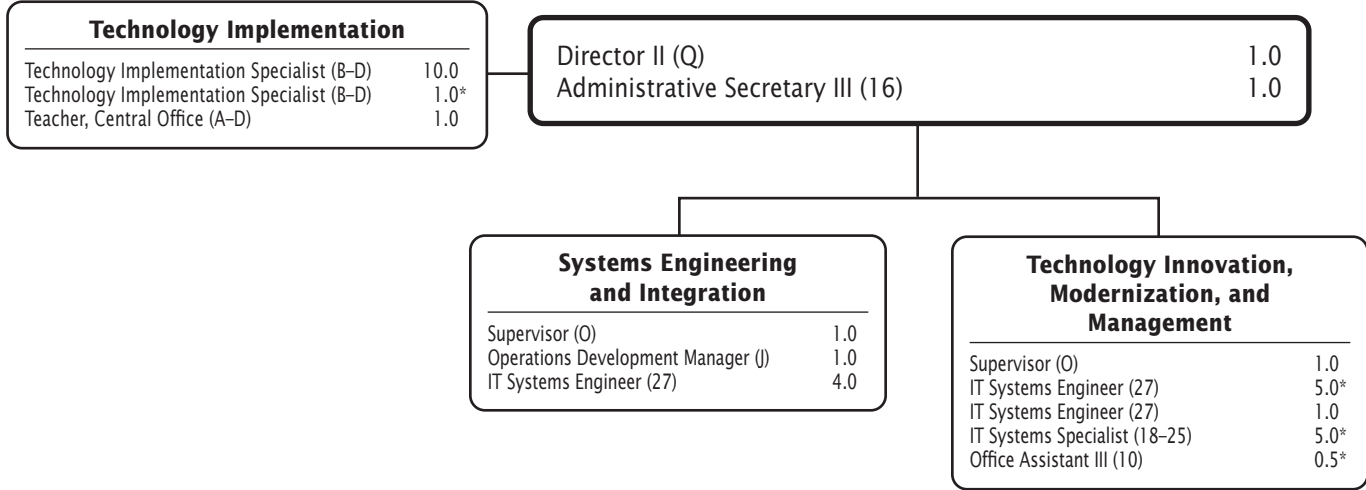
Department of Student and Data Systems



F.T.E. Positions 24.0

*This chart includes positions funded by the Capital Improvements Program Budget.

Department of Instructional Technology



F.T.E. Positions 32.5

*This chart includes positions funded by the Capital Improvements Program Budget.

Chapter 7

District Operations

Division of District Operations

Division of Transportation Services

Division of Facilities Management

Department of Facility Operations

Department of Facility Maintenance

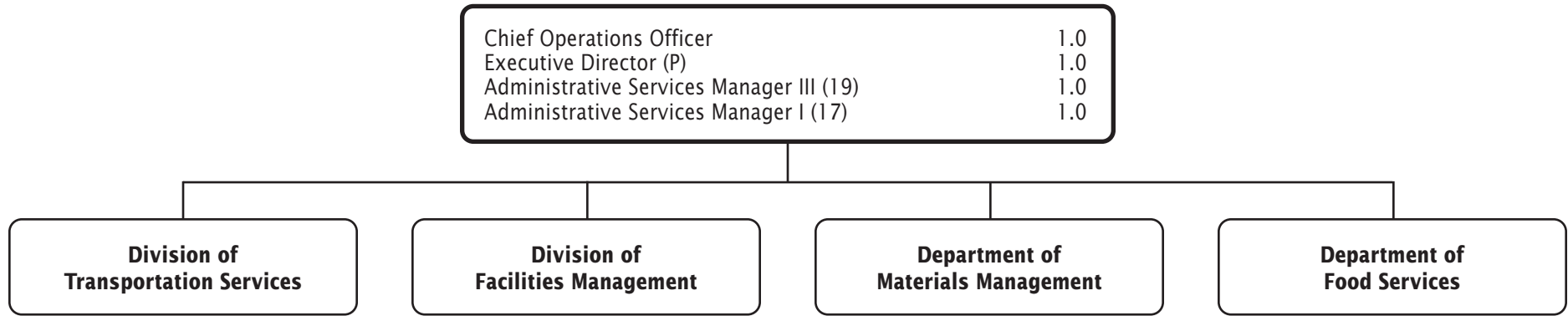
Department of Planning and Construction

Department of Food Services

Department of Materials Management



Division of District Operations



CHAPTER 7 - 1 DISTRICT OPERATIONS

F.T.E. Positions 4.0

FY 2026 OPERATING BUDGET

Division of Transportation Services

Information and Technology	
Team Leader (M)	1.0
Application Developer III (27)	1.0
IT Systems Engineer (27)	1.0
IT Systems Specialist (18-25)	4.0

Deputy Chief of Operations for Transportation	1.0
Administrative Services Manager I (17)	1.0
Transportation Special Assistant (15)	1.0
Administrative Operations Secretary (14)	1.0

Finance	
Team Leader (M)	1.0
Transportation Assistant Supervisor (20)	1.0
Fiscal Assistant V (22)	1.0
Fiscal Assistant IV (18)	1.0

Field Trip Fund	
Business Services Analyst (23)	1.0*
Senior Field Trip Coordinator (19)	1.0*
Field Trip Assistant (12)	3.0*

CHAPTER 7 - 2 DISTRICT OPERATIONS

Bus Operations	
Director I (P)	1.0
Coordinator (N)	2.0
DOT Electric Vehicle Manager (J)	1.0
Transportation Depot Manager (J)	7.0
Transportation Cluster Manager (19)	25.0
Transportation Dispatcher (19)	7.0
Bus Route Supervisor (17)	70.0
Administrative Secretary III (16)	1.0
Administrative Operations Secretary (14)	8.0
Radio Bus Operator (10 Mth.) (14)	18.0
Transportation Time and Attendance Assistant (14)	7.0
Bus Operator I (10 Mth.) (13)	1,141.543
Sp. Ed. Bus Attendant (10 Mth.) (7)	459.878

Student Support and Specialized Transportation Services	
Sp. Ed. Transportation Specialist (J)	1.0
Transportation Senior Routing Specialist (H)	1.0
Assistant Senior Route/Program Specialist (21)	1.0
Transportation Assignment Specialist (20)	2.0
Transportation Router (16)	6.0
Account Assistant III (14)	2.0
Administrative Operations Secretary (14)	2.0

Safety, Training, and Staff Development	
Supervisor, Professional Development (K)	1.0
Supervisor, Training (J)	1.0
Assistant Training Supervisor (21)	1.0
Program Technician (17)	1.0
Transportation Safety Trainer II (17)	3.0
Administrative Operations Secretary (14)	1.0
Transportation Safety Trainer I (14-15)	13.0
Bus Operator I (10 Mth.) (13)	2.0
Transportation Staff Assistant II (13)	1.0

Fleet Maintenance and Infrastructure	
Transportation, Fleet Manager (K)	1.0
Transportation, Assistant Fleet Manager (J)	1.0
Auto Repair Supervisor II (H)	1.0
Auto Parts Supervisor (23)	1.0
Auto Repair Supervisor I (22)	4.0
Auto Technician II (19)	3.0
Auto Technician II (19/ND)	10.0
Auto Technician I (17)	21.0
Auto Technician I (17/ND)	33.0
Auto Parts Specialist (15)	1.0
Administrative Operations Secretary (14)	1.0
Auto Parts Assistant (13)	1.0
Auto Parts Assistant (13/ND)	1.0
General Maintenance Worker III (13)	1.0
Satellite Parts Assistant (12)	4.0
Auto Technician Apprentice (11)	5.0
Auto Technician Apprentice (11/ND)	7.0
Service Writer (11)	5.0
Auto Service Worker (8)	2.0
Auto Service Worker (8)/ND	4.0
Transportation Fueling Assistant (8)	5.0

Turkey Thicket—Fleet Maintenance	
Auto Repair Supervisor I (22)	1.0
Auto Technician II (19)	3.0
Auto Technician I (17)	2.0
Auto Parts Assistant (13)	1.0

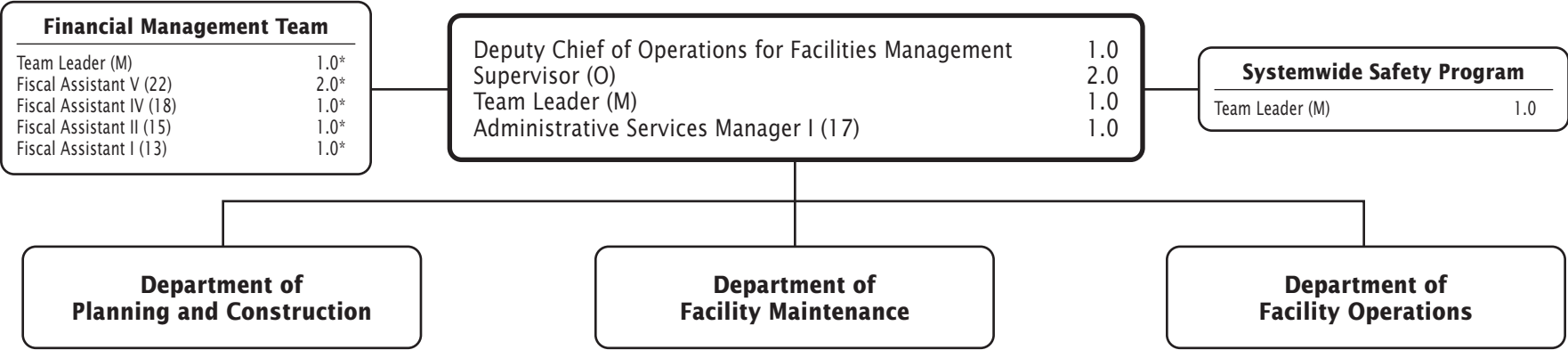
F.T.E. Positions 1,926.421

*Positions funded by the Field Trip Fund

Night Differential (ND) = Shifts 2 and 3

FY 2026 OPERATING BUDGET

Division of Facilities Management

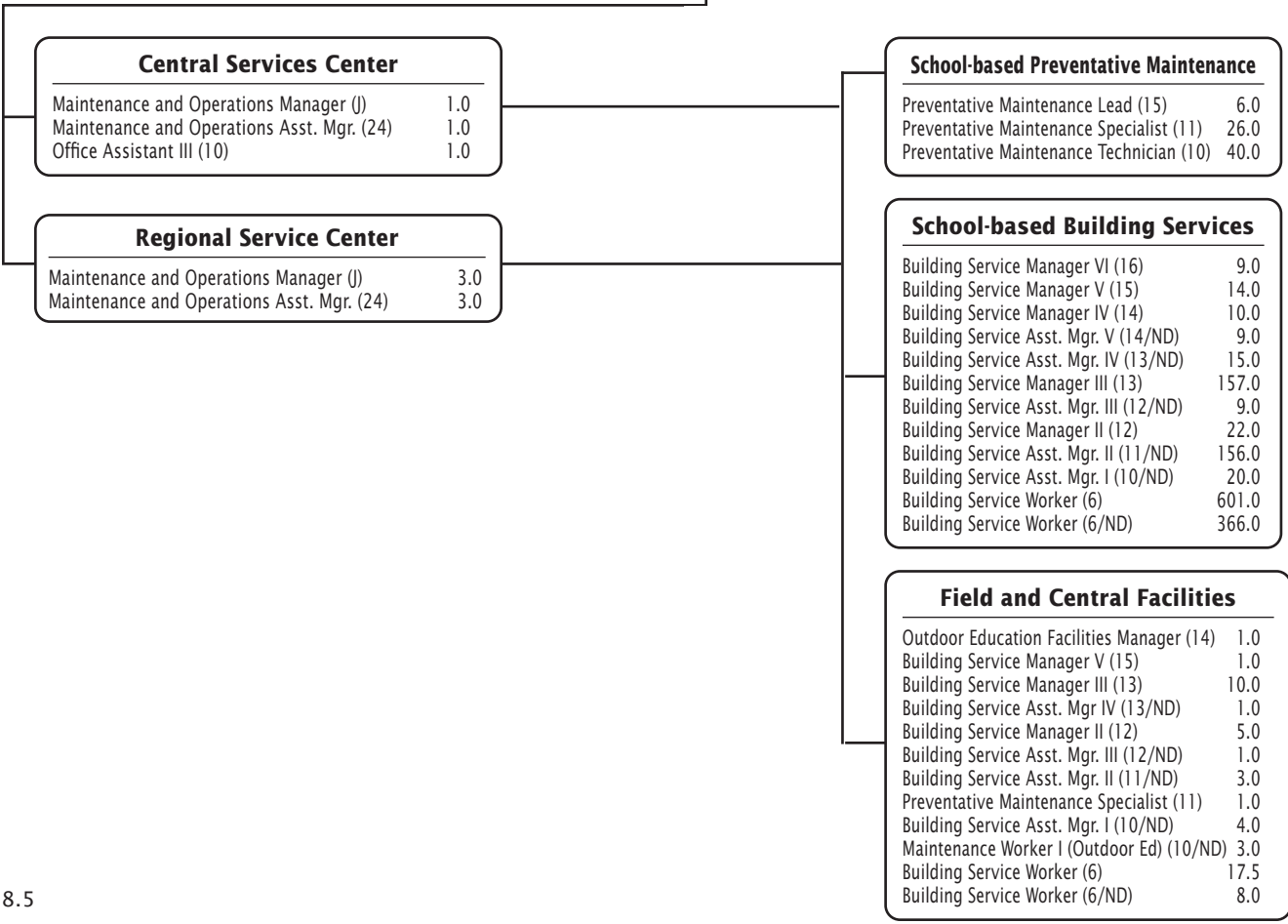


CHAPTER 7 - 3 DISTRICT OPERATIONS

F.T.E. Positions 12.0
 *Positions funded by the Capital Improvements Program Budget.

Department of Facility Operations

Director I (P)	1.0	Community Use of Public Facilities	
Administrative Secretary II (15)	1.0		
		Building Service Area Supervisor (G)	2.0*
		Building Service Worker (6)	30.0*



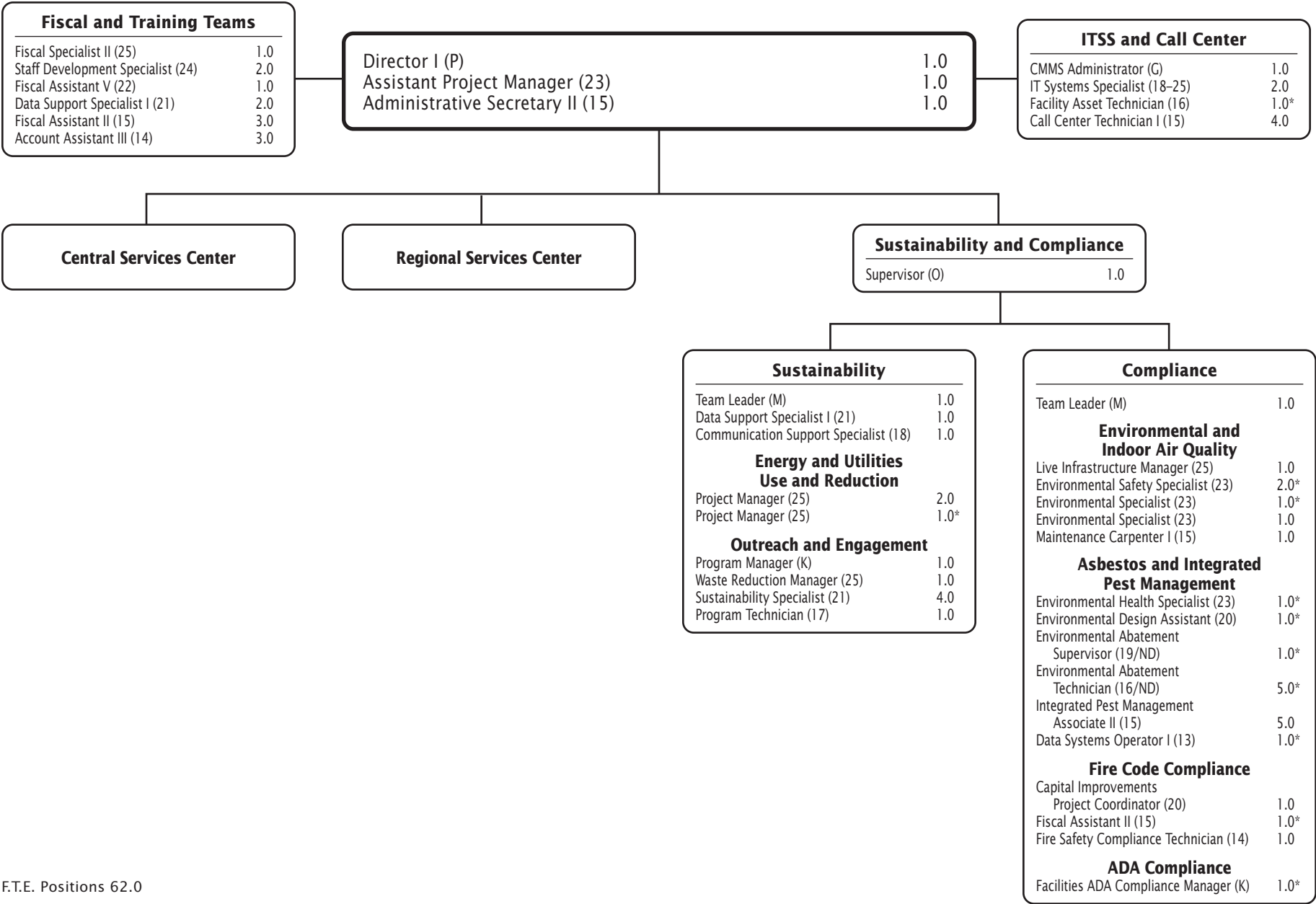
CHAPTER 7 - 4 DISTRICT OPERATIONS

F.T.E. Positions 1,558.5

*Positions funded by ICB.

FY 2026 OPERATING BUDGET

Department of Facility Maintenance



CHAPTER 7 - 5 DISTRICT OPERATIONS

F.T.E. Positions 62.0
 *Positions funded by the Capital Improvements Program budget.
 Night Differential (ND) = Shift 2

Department of Facility Maintenance—Service Centers

Department of Facility Maintenance

Central Services Center

Maintenance and Operations Manager (J)	1.0
Maintenance and Operations Asst. Mgr. (24)	1.0
Maintenance and Operations Trainer (17)	3.0
Office Assistant III (10)	1.0

Regional Services Center

Maintenance and Operations Manager (J)	3.0
Maintenance and Operations Asst. Mgr. (24)	3.0
Office Assistant III (10)	3.0

Building Automation Systems

Bldg Automation Systems Supervisor (24)	1.0
Bldg Automation Systems Asst. Sup. (22)	1.0
Bldg Automation Systems Specialist (20)	5.5
Bldg Automation Systems Specialist (20)	1.5*
Bldg Automation Systems Assistant (19)	1.0**

Electronics Shop

Electronics Supervisor (20)	1.0
Electronics Asst. Supervisor (19)	1.0
Electronics Technician II (18)	2.0
Electronics Technician I (17)	12.0
Electronics Technician I (17/ND)	1.0

Heavy Equipment Shop

Small Equipment Mechanic (16)	4.0
Maintenance Welder (15)	1.0
Equipment Operator (12)	3.0
Compactor Truck Operator (11)	1.0
General Maintenance Worker I (9)	3.0
Sanitation Service Worker (9)	1.0

General Maintenance Shop

General Maintenance Supervisor (18)	3.0
General Maintenance Asst. Supervisor (16)	3.0
General Maintenance Worker III (13)	6.0
Compactor Truck Operator (11)	3.0
General Maintenance Worker II (10)	21.0
General Maintenance Worker I (9)	13.0
Sanitation Service Worker (9)	3.0

Industrial Equipment Repair Shop

Industrial Equipment Supervisor (18)	1.0
Electric Motor Mechanic (17)	1.0
Equipment Mechanic (17)	1.0
Tool Mechanic (15)	4.0
Locksmith (14)	1.0

Materials Fabrication and Rigging Shop

Materials Fabrication Supervisor (18)	1.0
Mason (15)	2.0
Reupholster/Seamster II (13)	2.0
Materials Fabrication Worker (12)	4.0

Roofing Shop

Roofing Supervisor (19)	1.0
Roof Mechanic (15)	5.0
Roof Maintenance Worker (11)	5.5

Task Force

Maintenance and Operations Manager (J)	1.0
HVAC-R I-II (18-20)	3.0
Plumber I-II (18-20)	3.0
Maintenance Electrician II (18)	3.0
Maintenance Carpenter I (15)	3.0
Maintenance Painter II (14)	3.0
General Maintenance Worker I (9)	3.0
Building Service Worker (6)	3.0

Mechanical Systems Shop

HVAC-R Supervisor (23)	3.0
Plumbing Supervisor (23)	3.0
HVAC-R Assistant Supervisor (22)	3.0
Mechanical, Electrical, Plumbing Asst. Supervisor (22/ND)	1.0
Plumbing Assistant Supervisor (22)	3.0
HVAC-R I-II (18-20)	30.0
HVAC-R I-II (18-20/ND)	3.0
Plumber I-II (18-20)	21.0
Plumber I-II (18-20/ND)	2.0
Mechanical, Electrical, Plumbing Technician (16)	11.0
Mechanical, Electrical, Plumbing Technician (16/ND)	8.0
Mechanical Systems Worker (10-14)	3.0
HVAC Apprentice (12)	1.0

Electrical Shop

Electrical Supervisor (19)	3.0
Maintenance Electrician II (18)	3.0
Maintenance Electrician I (17)	17.0
Maintenance Electrician I (17/ND)	1.0

Carpentry Shop

Carpentry Supervisor (18)	3.0
Carpentry Assistant Supervisor (17)	3.0
Maintenance Carpenter I (15)	23.0
Maintenance Carpenter I (15/ND)	3.0
Glazier (15)	6.0
Floor Covering Mechanic (15)	6.0
Locksmith (14)	3.0
Maintenance Painter II (14)	3.0
Maintenance Painter I (13)	6.0

CHAPTER 7 - 6 DISTRICT OPERATIONS

F.T.E. Positions 329.5

*Positions funded by the Capital Improvements Program budget.

**Positions funded by ICB.

Night Differential (ND) = Shift 2

FY 2026 OPERATING BUDGET

Department of Planning and Construction

Director I (P)	1.0
Construction Services Specialist (24)	1.0*
Administrative Secretary II (15)	1.0*
Secretary (12)	1.0*
Office Assistant III (10)	1.0*

Design and Construction Team	
Supervisor (O)	1.0
Team Leader/Facilities Architect (M)	1.0
Facilities Manager (K)	1.0*
Project Manager (25)	7.0*
Assistant Project Manager (23)	3.0*
Construction Supervisor (23)	2.0*
Project Engineer II (22)	4.0*
Project Engineer I (21)	7.0*

Capital Planning and Real Estate Management Team	
Supervisor (O)	1.0
Senior Facilities Planner (27)	2.0
Coordinator GIS Services (26)	1.0**
Real Estate Management Specialist (25)	1.0*
Planner II (24)	2.0*
Planner I (21)	1.0*
Planner I (21)	1.0**
Fiscal Assistant III (16)	1.0**
Secretary (12)	1.0**
Building Services Manager II (12)	2.0**
Building Services Assistant Manager I (10/ND)	1.0**
Building Services Worker (6)	3.0**

Special Projects Team	
Team Leader (M)	1.0*
Facilities Manager (K)	2.0*
Facilities Manager (K)	1.0
LEED Program Specialist (26)	1.0*
Project Manager (25)	2.0*
Capital Improvement Assistant Supervisor (23)	1.0*
Site Development Coordinator (23)	1.0*
CI Project Coordinator (20)	4.0*
CI Project Coordinator (20)	2.0
Project Designer (20)	2.0*
Roof Mechanic (15)	1.0
Secretary (12)	1.0

CHAPTER 7 - 7 DISTRICT OPERATIONS

F.T.E. Positions 66.0

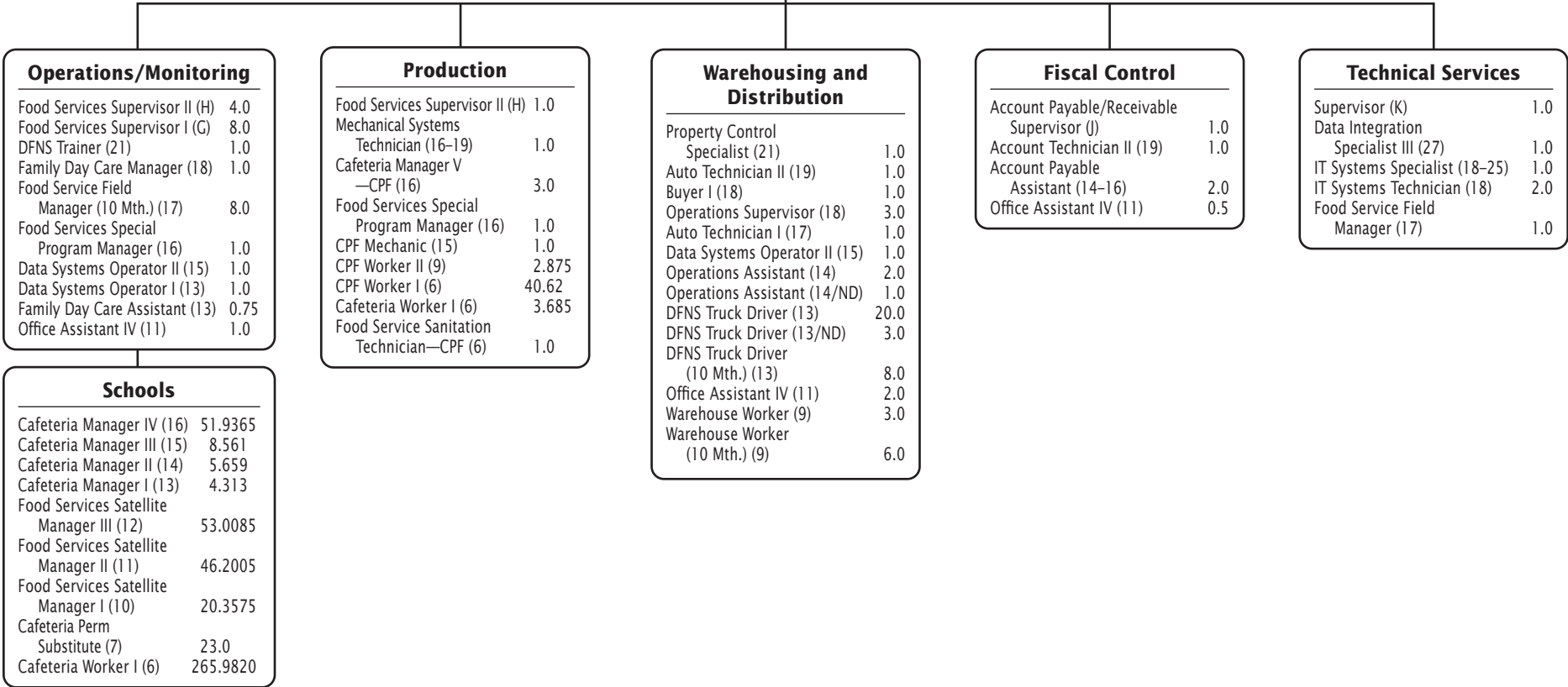
*Positions funded by the Capital Improvements Program Budget.

**Positions funded by the Real Estate Management Fund.

FY 2026 OPERATING BUDGET

Department of Food Services

Director I (P)	1.0
DFNS & CPF Warehouse Specialist (J)	3.0
Administrative Secretary II (15)	1.0



F.T.E. Positions 629.4480

Positions allocated to schools also are shown on K-12 charts in Chapter 1, Schools.

Night Differential (ND) = Shift 3

FY 2026 OPERATING BUDGET

Department of Materials Management

Director II (Q)	1.0
Materials Management Operations Manager (K)	1.0
Administrative Secretary III (16)	1.0
Fiscal Assistant III (16)	1.0

Taylor Science Center	
Operations Supervisor (18)	1.0
Fiscal Assistant II (15)	1.0
Truck Driver/Warehouse Worker (12)	2.0

Media Processing Services Unit	
Processing Center Librarian (20)	1.5
Instructional Materials Assistant II (14)	2.0
Instructional Materials Assistant I (12)	1.0

Property/Materials Control Team	
IT Systems Specialist (18-25)	1.0
Business Services Analyst (23)	1.0
Property Control Specialist (21)	1.0
Supply Services Coordinator (17)	1.0
Materials Management Support Specialist (16)	1.0
Materials and Property Assistant (13)	1.0
Office Assistant IV (11)	0.5

Supply and Property Management Unit	
Logistics and Operations	
Logistics Specialist (H)	1.0
Automotive Technician II (19)	1.0
Operations Supervisor (18)	1.0
Automotive Technician I (17)	1.0
Tractor Trailer Operator (13)	2.0
Truck Driver/Warehouse Worker (12)	12.0
Warehouse Worker (9)	2.0
Distribution Services	
Operations Supervisor (18)	1.0
Mail Supervisor (14)	1.0
Truck Driver/Warehouse Worker (12)	7.0
Warehouse Assistant (6)	0.5
Warehouse Store	
Operations Supervisor (18)	1.0
Operations Assistant (14)	1.0
Truck Driver/Warehouse Worker (12)	5.0
Science Materials	
Operations Assistant (14)	1.0
Truck Driver/Warehouse Worker (12)	2.0

CHAPTER 7 - 9 DISTRICT OPERATIONS

Chapter 8

Safety and Emergency Management

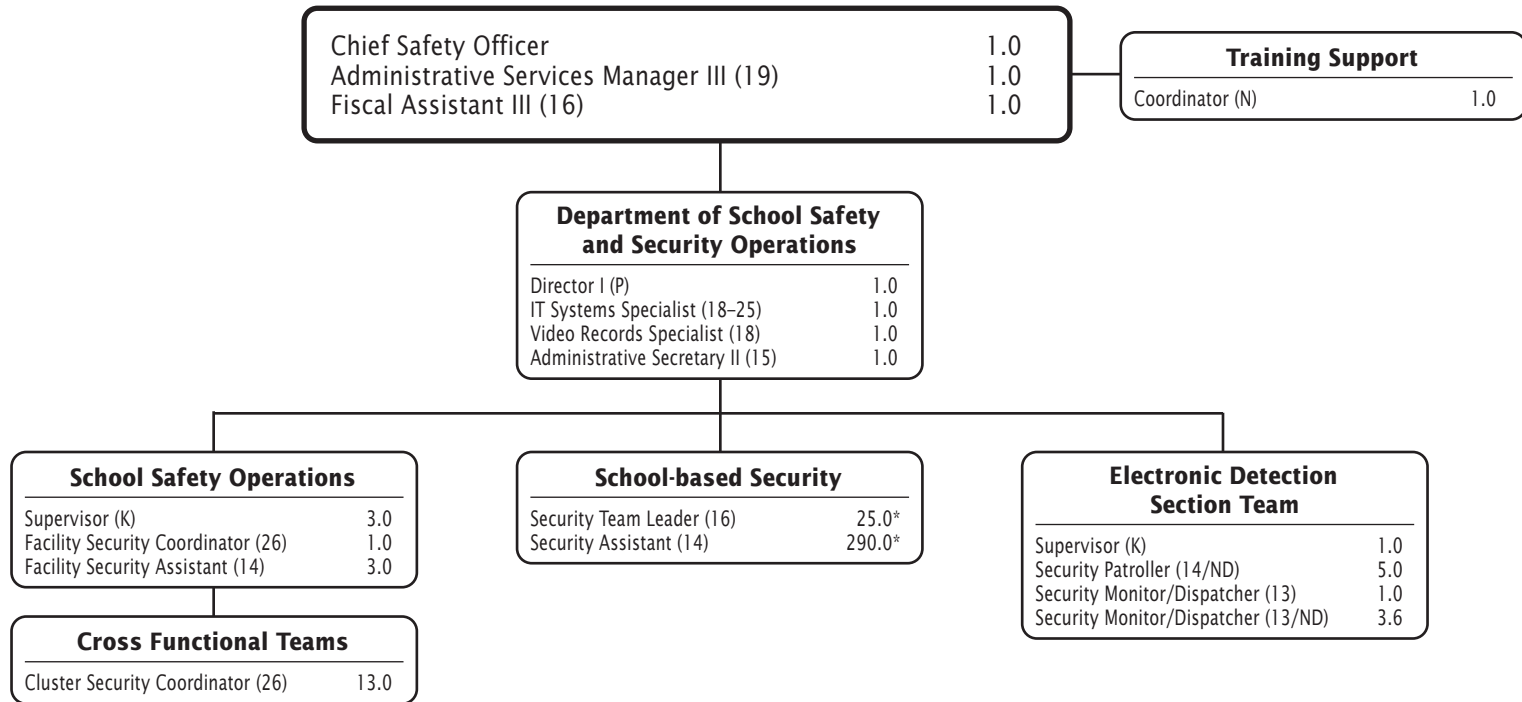
**Division of Safety and
Emergency Management**

Department of School Safety



Safety and Emergency Management

Division of Safety and Emergency Management



F.T.E. Positions 353.6

*This chart includes positions that are funded in Chapter 1, Schools.

Night Differential (ND) = Shifts 2 and 3

Chapter 9

Human Resources and Talent Management

Division of Human Resources and Talent Management

Department of Talent Acquisition

Department of Compliance and Investigation

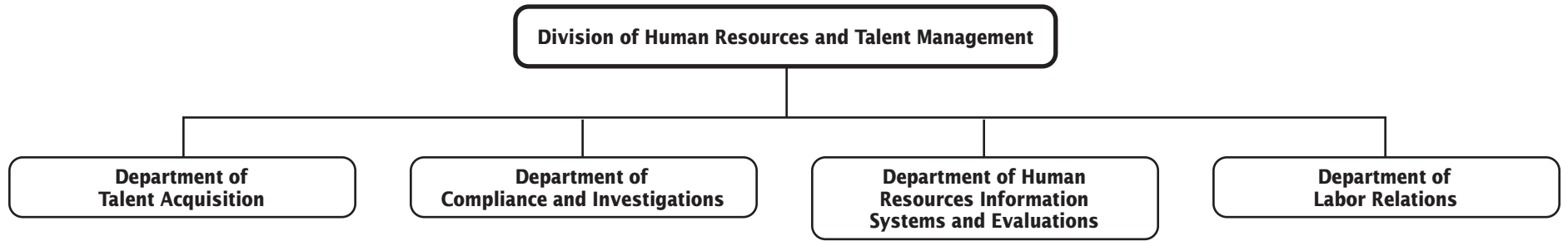
Department of Human Resources

Information Systems and Evaluations

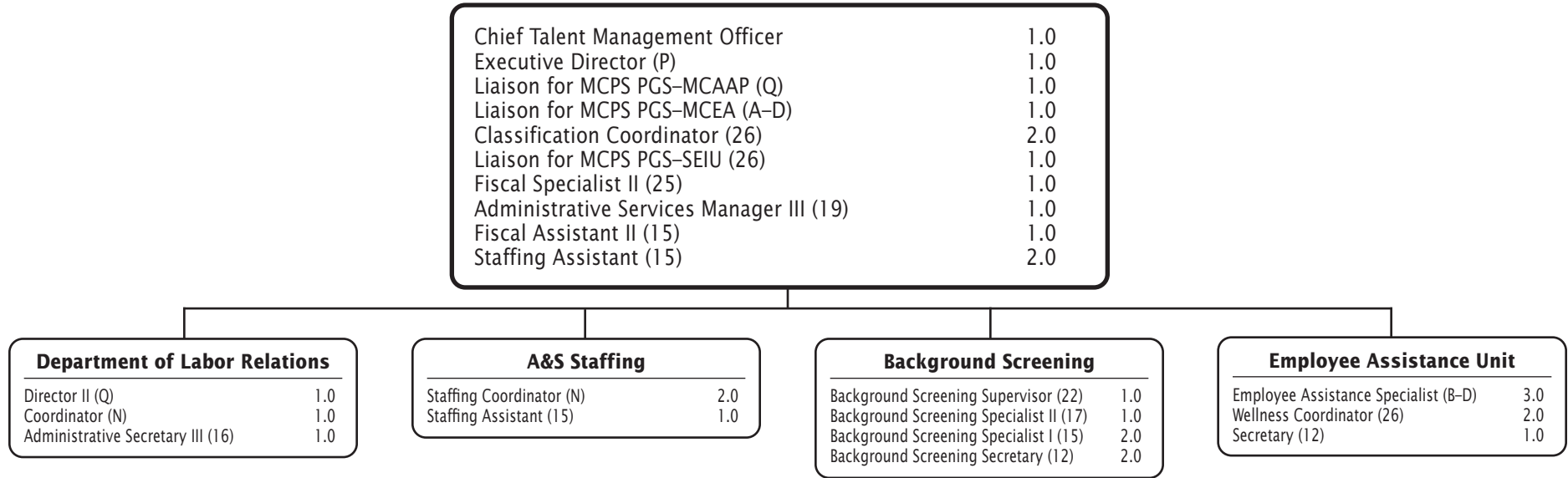


Human Resources and Talent Management

Human Resources and Talent Management—Overview



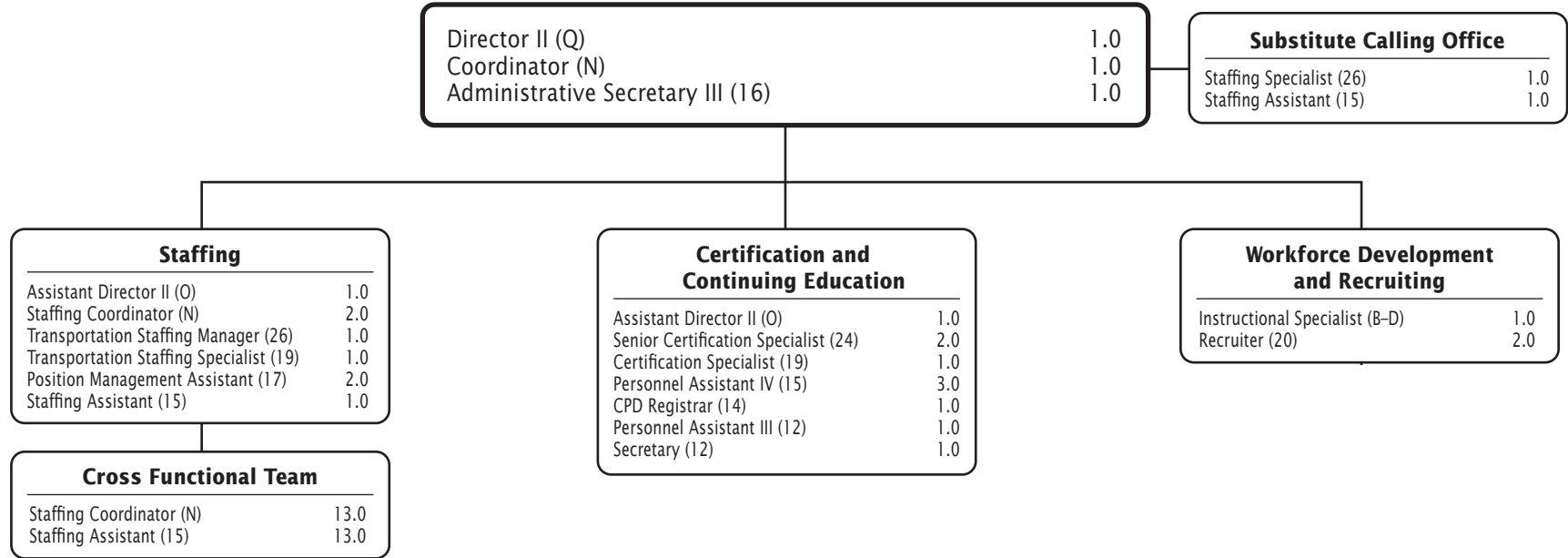
Division of Human Resources and Talent Management



F.T.E. Positions 30.0

FY 2026 OPERATING BUDGET

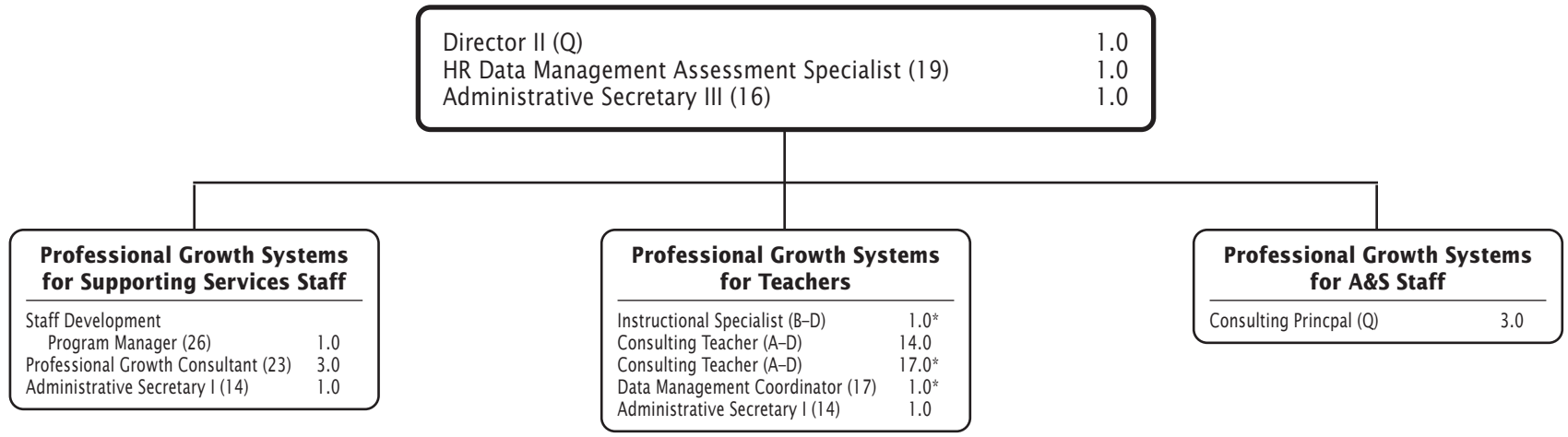
Department of Talent Acquisition



Department of Compliance and Investigation

Director II (Q)	1.0
Coordinator (N)	3.0
Investigation Specialist (25)	6.0
Administrative Secretary III (16)	1.0
Background Screening Specialist I (15)	1.0
Administrative Secretary I (14)	1.0

Department of Human Resources Information Systems and Evaluations



F.T.E. Positions 45.0

*Positions funded by the Title II, Part A Supporting Effective Instruction grant from the Department of Professional Learning in Chapter 5, Equity and Organizational Development, are reflected on this chart.

Chapter 10

Financial Management

Division of Financial Management

Division of Financial Oversight

Department of Controller

Department of Employee and Retiree Services

Department of Management and Budget

Department of Financial School Support

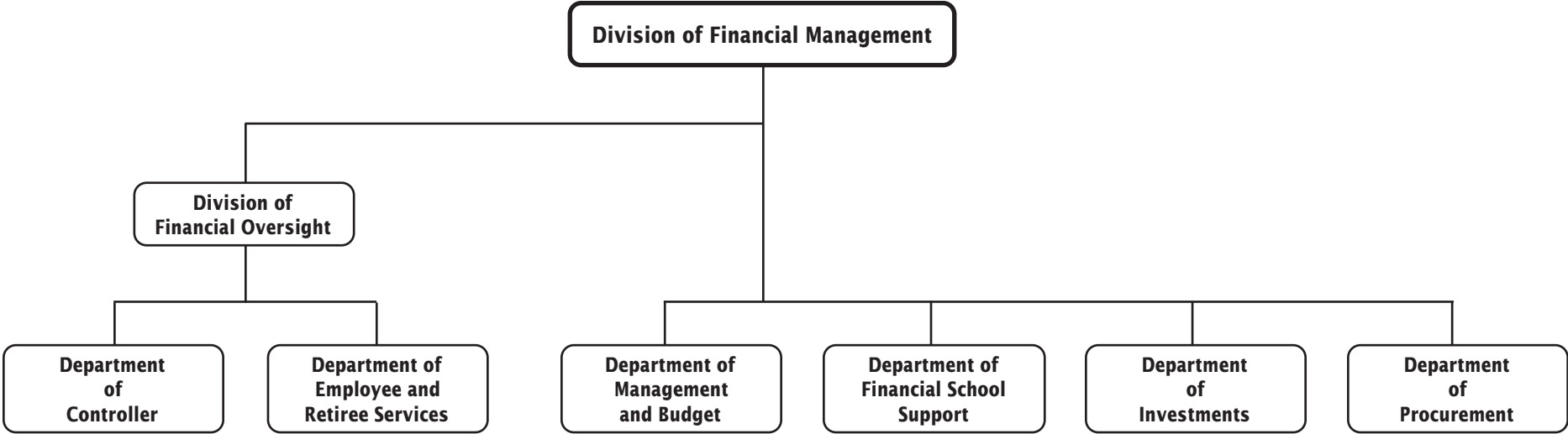
Department of Investments

Department of Procurement



Financial Management

Financial Management—Overview



CHAPTER 10 - 1 FINANCIAL MANAGEMENT

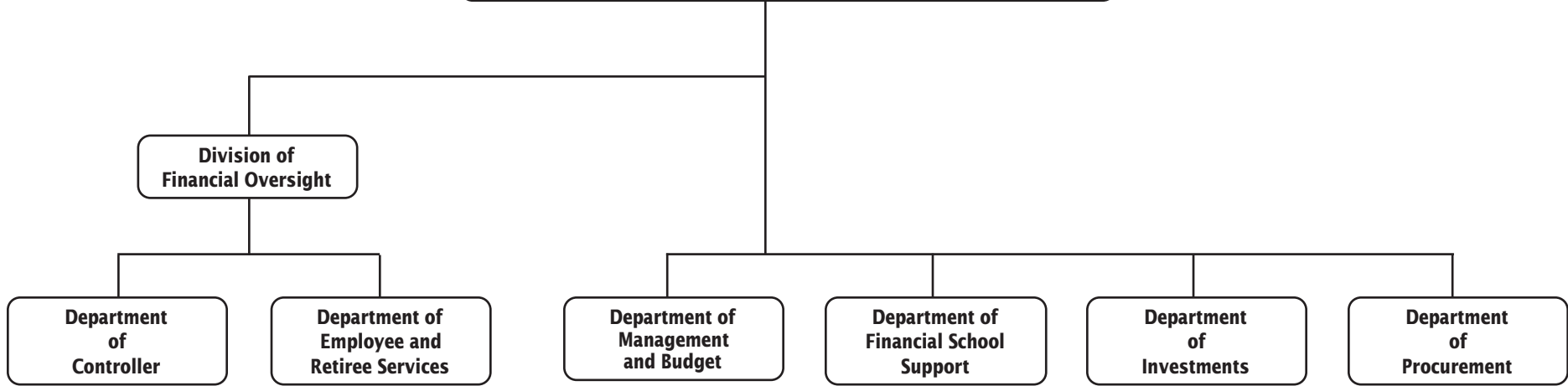
F.T.E. Positions 103.0

In addition, there are 20.0 positions funded by the Employee Benefits Trust Fund and 8.0 positions funded by the Employee Pension Fund. These non-operating budget positions are noted on other charts in this chapter.

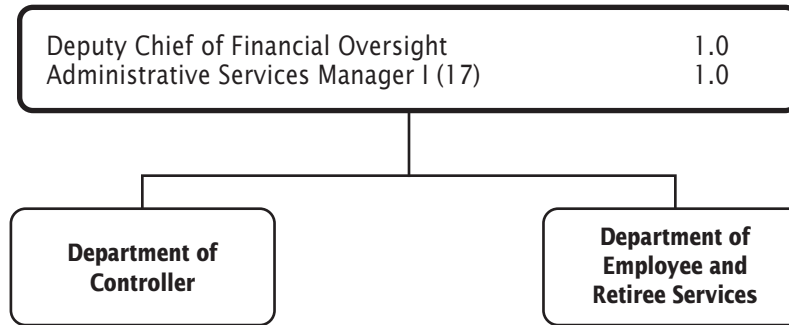
FY 2026 OPERATING BUDGET

Division of Financial Management

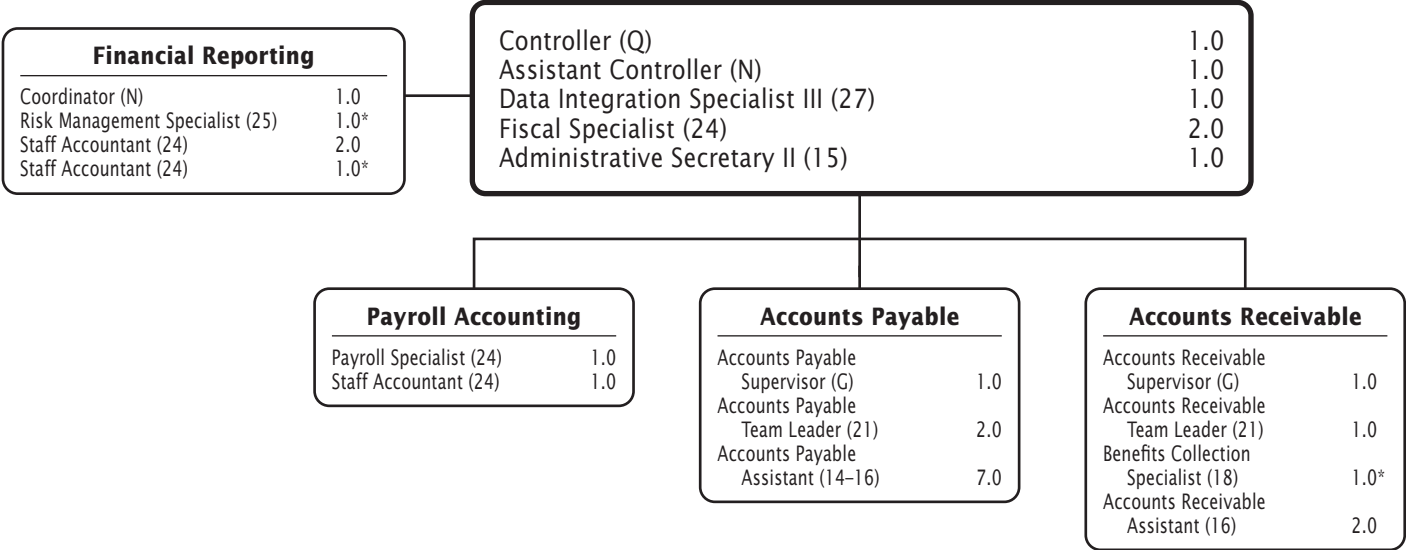
Chief Financial Officer	1.0
Executive Director (P)	1.0
Administrative Services Manager III (19)	1.0



Division of Financial Oversight



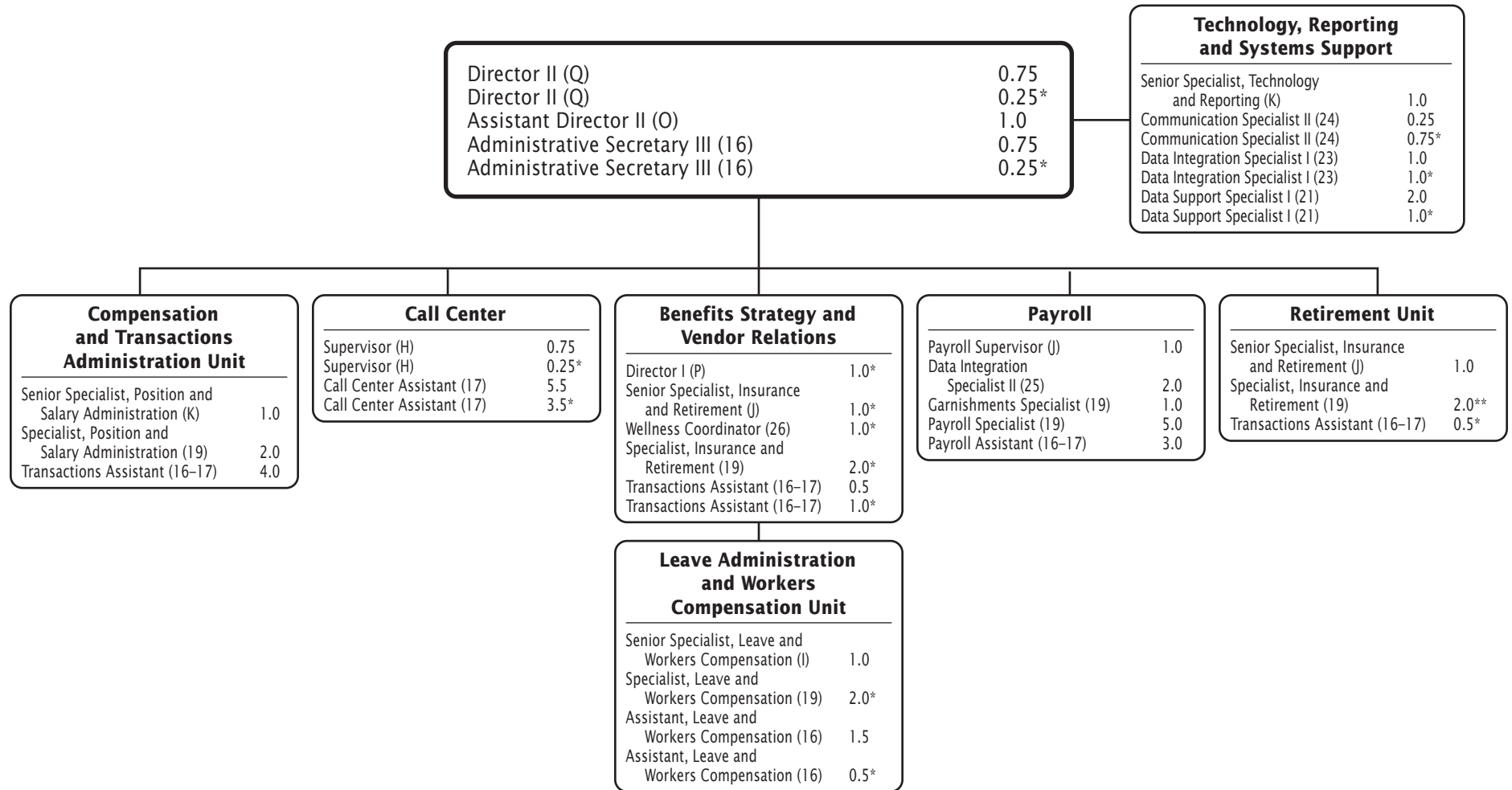
Department of Controller



F.T.E. Positions 28.0

*Positions funded by the Employee Benefits Trust Fund.

Department of Employee and Retiree Services

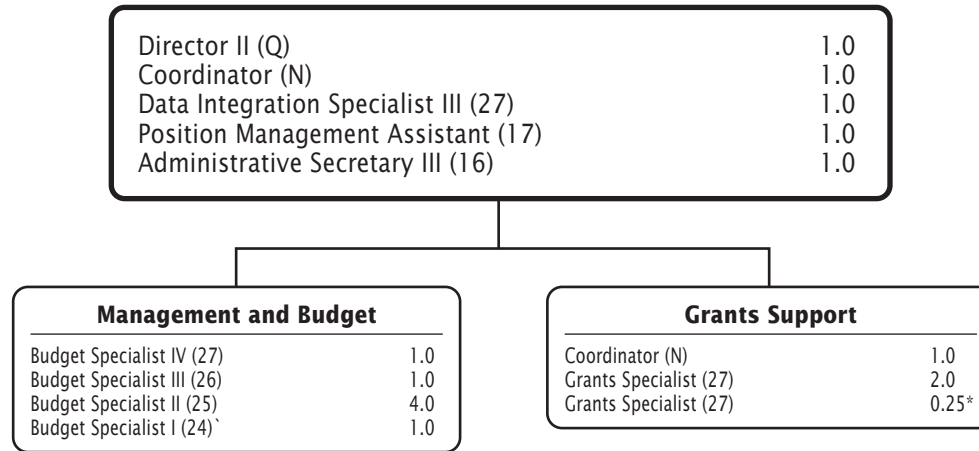


F.T.E. Positions 54.0

*Positions funded by the Employee Benefits Trust Fund.

**Positions funded by the Employee Pension Trust Fund.

Department of Management and Budget



F.T.E. Positions 15.25

*Position funded by the Title IV, Student Support and Academic Enrichment grant in Chapter 3, Teaching and Learning, is reflected on this chart.

FY 2026 OPERATING BUDGET

Department of Financial School Support

Director I (P)	1.0
Team Leader (M)	1.0
Fiscal Specialist (24)	1.0
Fiscal Assistant IV (18)	3.0

Department of Investments

Director I (P)	1.0*
Senior Manager (M)	2.0*
Investment Analyst (26)	1.0*
Fiscal Assistant V (22)	1.0*
Fiscal Assistant V (22)	1.0**
Administrative Secretary II (15)	1.0*

F.T.E. Positions 7.0

*Positions funded by the Employee Pension fund.

**Positions funded by the Employee Benefits Trust Fund.

Department of Procurement

Director I (P)	1.0
Senior Buyer (J)	1.0
Business Services Analyst (23)	1.0
Buyer II (22)	3.0
Contract Administrator (20)	2.0
Buyer I (18)	3.0
Data Management Coordinator (17)	1.0
Administrative Secretary II (15)	1.0
Buyer Assistant II (14)	3.0

Chapter 11

Community Engagement and Communications

Chief of Staff

Division of Family and Community Engagement

Department of Family Engagement

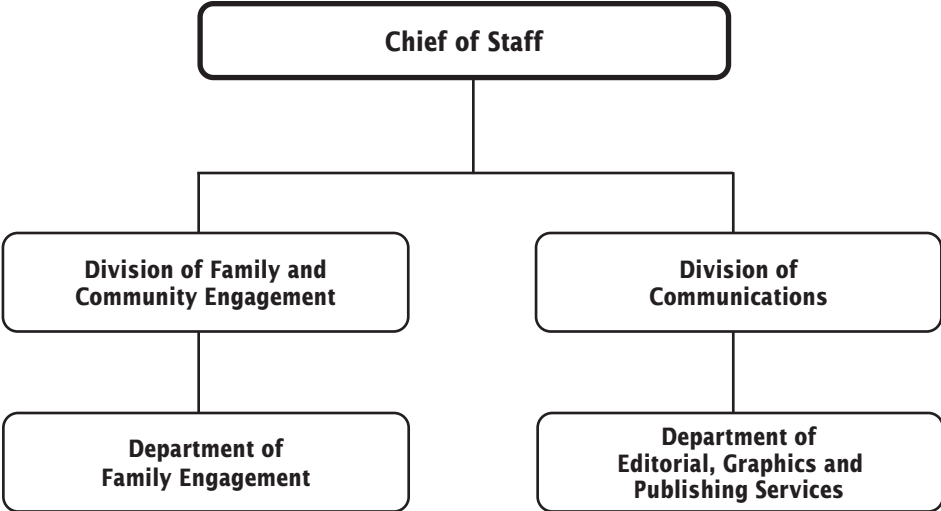
Division of Communications

Department of Editorial, Graphics and Publishing Services



Community Engagement and Communications

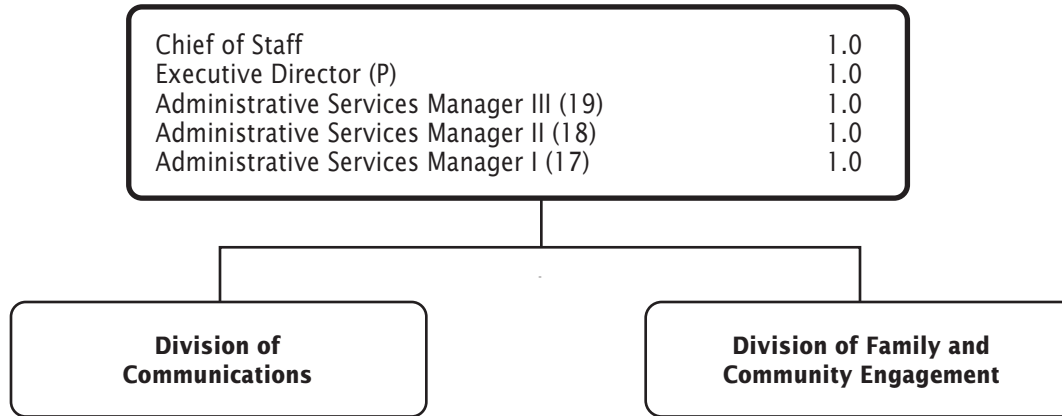
Community Engagement and Communications—Overview



F.T.E. Positions 101.0

In addition, there are 2.0 positions funded by the Capital Improvements Program budget.

Office of the Chief of Staff



Division of Family and Community Engagement

Deputy Chief of Staff for Community Engagement	1.0
Coordinator (N)	1.0
Instructional Specialist (B-D)	2.0
Administrative Services Manager I (17)	1.0

Department of Family Engagement	
Director I (P)	1.0
Instructional Specialist (B-D)	1.0
Parent Community Coordinator (20)	5.0
Administrative Secretary II (15)	1.0

Division of Communications

Deputy Chief of Staff for Communications	1.0
Administrative Services Manager I (17)	1.0

Montgomery County Public Schools Television	
Business Operations Supervisor (K)	1.0
TV Production Manager (25)	1.0
Multimedia Producer/Director (22)	1.0
Television Production Technician II (20)	1.0
Special Revenue Fund	
Multimedia Engineer (27)	1.0
Multimedia Designer (23)	1.0
Multimedia Producer/Director (22)	4.0
Television Production Technician II (20)	1.0
Program Director (18)	1.0
Associate Producer/Director (17)	3.0

Public Information and Web Services	
Director I (P)	1.0
Coordinator (N)	1.0
IT Systems Engineer (27)	1.0*
IT Systems Specialist (18-25)	1.0*
Communications Project Manager (24)	1.0
Communications Specialist II/ Photographer (24)	1.0
Communications Specialist/ Web Producer (21)	8.0
Communications Assistant (16)	1.0
Office Assistant IV (11)	2.0

Language Assistance Services Unit	
Language Services Supervisor (G)	1.0
Translation Specialist (21)	7.0
Administrative Secretary II (15)	1.0
Language Services Assistant (13)	4.0

Department of Editorial, Graphics, and Publishing Services	
---	--

CHAPTER 11 - 4 COMMUNITY ENGAGEMENT AND COMMUNICATIONS

F.T.E. Positions 47.0

*Positions are funded by the Capital Improvements Program Budget.

FY 2026 OPERATING BUDGET

Department of Editorial, Graphics, and Publishing Services

Director I (P)	1.0
Printing Supervisor (H)	1.0
Publications Supervisor (G)	1.0
Communications Specialist II (24)	1.0
Publications Art Director (23)	1.0
Communications Specialist/Web Producer (21)	1.0
Mechanical Systems Technical Supervisor (21)	1.0
Senior Graphic Designer (20)	1.0
Graphic Designer (18)	3.0
Printing Equipment Operator IV (18)	2.0
Customer Service Specialist (16)	2.0
Printing Equipment Operator III (16)	2.0
Copier Repair Technician (15)	5.0
Printing Equipment Operator II (14)	6.5
Printing Equipment Operator I (11)	3.5

Printing Services	
Printing Equipment Operator IV (18)	1.0
Customer Service Specialist (16)	1.0
Copier/Repair Technician (15)	1.0
Fiscal Assistant II (15)	1.0
Printing Equipment Operator I (11)	2.0

Chapter 12

Administration and Oversight

Board of Education

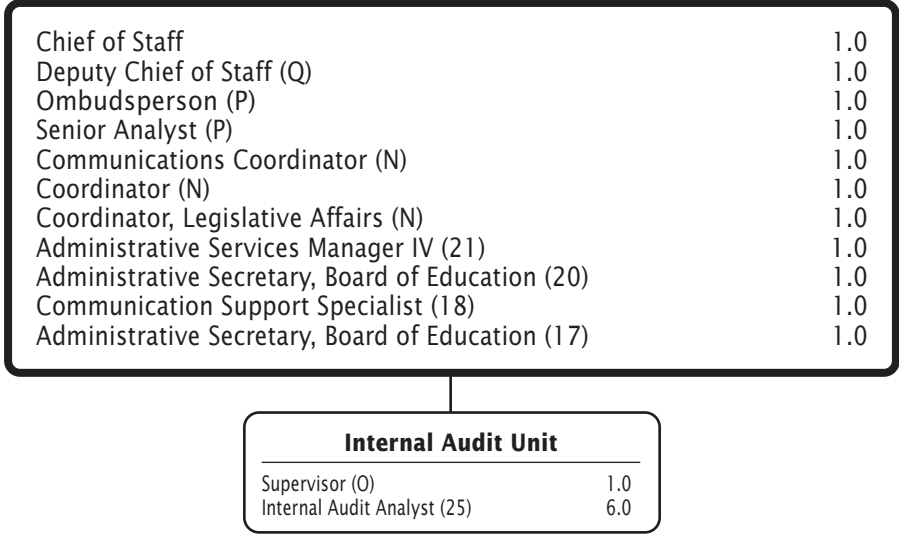
Office of the Superintendent of Schools

Legal Services



Administration and Oversight

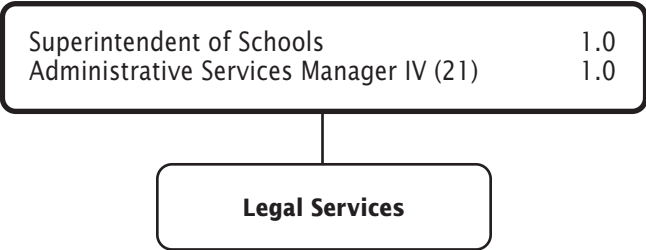
Board of Education



F.T.E. Positions 18.0

FY 2026 OPERATING BUDGET

Office of the Superintendent of Schools



Legal Services

