



The

Judy Center Early Learning Hub

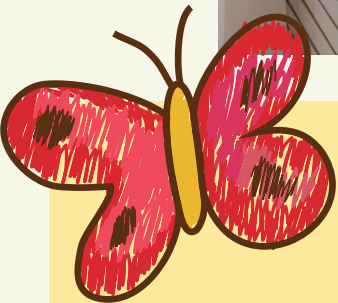
at Summit Hall Elementary School



Family Engagement

The Judy Center families will take their first field trip of the year to visit Imagination Stage in Bethesda for an interactive, toddler and sensory friendly performance of "Mouse on the Move".

Our SNAP-Ed partnership continues to support our families with parent/child cooking classes on Zoom. This month, families will have the opportunity to make a health Enchilada Casserole as well as a fabulous dish of Beans and Greens.



Winter Is Here!

The Judy Center is looking forward to all the Winter fun coming our way. We are now fully staffed and our new team members are excited to learn their new roles and all the ways the Judy Center Early Learning Hub provides support to the families and children in our community. Children and families can look forward to new experiences and learning opportunities for parents, caregivers and children in the winter season.

The winter weather has arrived early and we continue to accept donations of new or used coats for adults and children. Please contact us if you wish to donate.

Professional Development

Support for professional development activities will resume very soon. Please check your emails for the link to our Professional Development Needs Survey. Results will be compiled and used to identify the PD needs of our partners and stakeholders. If you need another link or would like to identify an alternate person, please contact Dr. Anderson so that they may be added to our mailing list.





Activities for Little Learners

Play and learn (PAL) | T, W, Th | 9:30 am Children and families will develop strategies to include singing, dancing, drama and other activities in their daily routine.

January 17, 18, 19, 23, 25, 31

My Gym @ Kentlands | Wednesday | 11:30 am A variety of movement games and gross motor exercises to promote body and spatial awareness in babies and toddlers.

January 17 & 31

Toddler Ballet | Thursday | 9:30am Music, movement, balance and basic dance steps are introduced in a fun, friendly and positive manner.

January 18, 25

Community Playgroup | Friday | 10:00am Community playgroup for select children from ITP and Judy Center.

January 5 & 26

SNAP-Ed Virtual Cooking Class | 10:00am Ingredients and recipes provided by Judy Center with instruction provided by Pam Hossimer, Nutrition Educator.

January 19

PreK Soccer Shots | Wednesday | 3:45pm Soccer Class for PreK Students at the SHES Gym.

January 17, 24, & 31

PreK Tiny Chefs | Tuesday | 3:30pm Healthy snack making class for PreK Students in the Judy Center.

January 16, 23, 30

Learning Opportunities for Parents

Judy Center parents continue to use the Ready Rosie online platform to learn new ways to engage their children in learning through everyday routines. In January we will introduce our first Virtual Ready Rosie Parent Workshop titled "You Can Make a Difference". Following each class, parents will receive learning materials for their children as well as be entered into a raffle to win a family prize.

Parents using Rosetta Stone English Language Classes continue to make progress. This month's check in will be on January 29th and rewards will be given for progressing to another level. Parents who are interested in in-person classes can be referred to the classes facilitated by the SHES Community School Liaison, Marga Aldiego.

Weekly Community Schools Parent Classes:

Monday | 9:15 | Beginner English
Monday | 2:30 | Spanish Literacy
Tuesday | 9:15 | Intermediate English
Thursday | ComCorner (Coffee and Conversation)
Friday | 9:15 | Advanced English
T/Th | 2:30 | Sewing Class

Congratulations!

Congratulations to Yesenia Huamani, December's Cooking Class Winner! Yesenia won a brand new Electric Griddle to use at home.



JUDY CENTER TEAM

Dr. Aprielle Anderson
Program Manager
aprielle_anderson-dickert@mcpsmd.org

Ruth Granados
Family Services Coordinator
ruth_m_granados@mcpsmd.org

Martha Bruno
Parent Community Coordinator
martha_t_bruno@mcpsmd.org

Emilia "Emy" Guerrero
Program Secretary
emilia_a_guerrero@mcpsmd.org

Teresa DelGadillo PreK/Head Start
Family Services Worker
teresa_delgadillo@mcpsmd.org