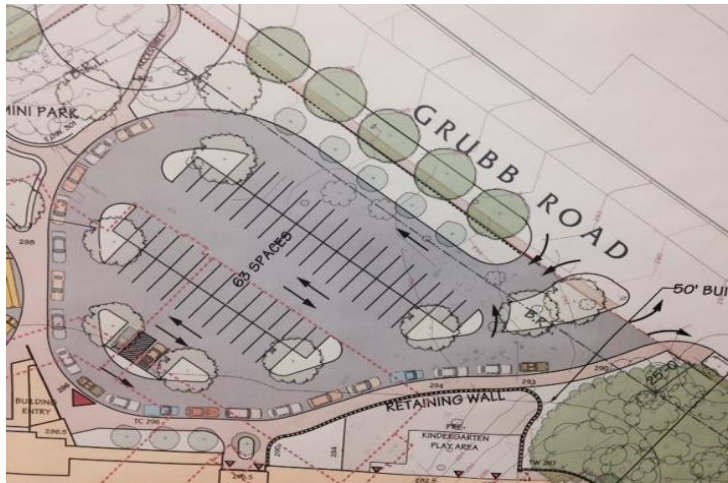


Rock Creek Forest Elementary School

CAR RIDER CONTRACT



Rock Creek Forest is fortunate to have a Car Rider Loop for drop-off and pick up. We need full cooperation from our families to ensure the safety of our students and smooth efficient operations. In order to use the Car Rider Loop, please read the important procedural details below and complete the contract below. By signing this document, you are agreeing to follow all of the expectations below.

- Please enter the drop off circle on **Grubb Road** and drive around the loop to the orange cone.
- There is **no drop off or pick up on Colston Drive** as it is not safe.
- Please ensure that backpacks and all school gear (instruments, lunchboxes, projects, etc...) are in the car and not the trunk so that the children can safely and quickly enter the school.
- Children exit and enter the car on the curbside of the car, **ONLY**.
- Please pull into a visitor parking space if you need to get out of your vehicle for any reason.
- Refrain from cell phone use.
- An adult will help your child out of the car in morning during drop-off from 9:10 -9:25 am. After 9:25am, please park in designated visitor spaces and escort your child to the office.
- Dismissal begins at 3:50pm. An adult will escort your child to the Car Rider Loop. Staff will look for your Number Placard in your windshield and ensure that your child gets into the car safely.

I understand and agree to follow the Rock Creek Forest Elementary school policies and procedures for the Car Rider Loop to ensure that it is safe and efficient. In addition, I will share this information with my childcare providers to ensure they fully understand the Car Rider Loop procedures.

Student: _____
 Parent/Guardian
 (Please print): _____

Teacher: _____
Signature: _____

Date _____

Please sign and return this contract to Rock Creek Forest ES.

Rock Creek Forest Elementary School

Car Rider Arrival and Dismissal



Rock Creek Forest is fortunate to have a Car Rider Loop for drop-off and pick up. We need full cooperation from our families to ensure the safety of our students and smooth efficient operations.

- Please enter the drop off circle on **Grubb Road** and drive around the loop to the orange cone.
- There is ***no drop off or pick up on Colston Drive*** as it is not safe.
- Please ensure that

backpacks and all school gear (instruments, lunchboxes, projects, etc...) are in the car and not the trunk so that the children can safely and quickly enter the school.

- Children exit and enter the car on the curbside of the car, **ONLY**.
- Please pull into a visitor parking space if you need to get out of your vehicle for any reason.
- Refrain from cell phone use.
- An adult will help your child out of the car in morning during drop-off from 9:10 -9:25 a.m. After 9:25am, please park in designated visitor spaces and escort your child to the office.
- Dismissal begins at 3:50pm. An adult will escort your child to the Car Rider Loop.