

10TH AND 11TH GRADE COLLEGE & CAREER PREP MEETING

COLLEGE APPLICATION TIMELINE | COLLEGE TESTING INFO | NAVIANCE
INFO | IMPORTANT DATES/WEBSITES | Q & A W/ STUDENT PANEL

OBJECTIVE

To make the college search and application process as smooth as possible,
and thus minimize senior year stress.

IN A PERFECT WORLD.....

100% of college applications would be completed before the first day of school
senior year

THE REALITY.....

50% - 75% of college applications are completed

ADMISSIONS FACTORS



WHAT MATTERS??

Admissions Test Scores
Grades in Core Courses
Demonstrated Interest
Teacher
Recommendations



WHAT MATTERS??

Strength of Curriculum
AP/IB Test Scores
Personal Essay /
Writing Sample
Counselor
Recommendation



WHAT MATTERS??

Class Rank
Personal Interview
Extracurricular Activities

NACAC STATE OF ADMISSIONS REPORT

TABLE 7. PERCENTAGE OF COLLEGES ATTRIBUTING DIFFERENT LEVELS OF IMPORTANCE TO FACTORS IN ADMISSION DECISIONS: FIRST-TIME FRESHMEN, FALL 2017

Factor	N	Considerable Importance	Moderate Importance	Limited Importance	No Importance
Grades in All Courses	173	80.9	10.4	5.8	2.9
Grades in College Prep Courses	171	70.8	17.5	8.8	2.9
Admission Test Scores (SAT, ACT)	172	52.3	30.8	14.5	2.3
Strength of Curriculum	170	51.2	29.4	12.9	6.5
Essay or Writing Sample	168	16.7	36.9	20.8	25.6
Counselor Recommendation	167	10.8	46.1	28.7	14.4
Student's Demonstrated Interest	168	15.5	21.4	34.5	28.6
Teacher Recommendation	168	7.1	46.4	29.2	17.3
Class Rank	172	9.3	27.9	36.0	26.7
Extracurricular Activities	169	3.6	34.9	40.8	20.7
Subject Test Scores (AP, IB)	166	4.2	28.9	28.3	38.6
Portfolio	167	5.4	7.2	27.5	59.9
Interview	168	3.6	14.3	29.2	53.0
Work	169	1.8	17.8	41.4	39.1
SAT II Scores	166	6.6	3.0	19.9	70.5
State Graduation Exam Scores	168	1.8	8.3	17.9	72.0

SOURCE: NACAC Admission Trends Survey, 2017–18.

APPLICATION TIMELINE

Take SAT, ACT, or both. (Several prep course options are available)

Naviance *Super Match College Search* to identify 5-10 *Collages I'm Thinking About*

Complete *College/Scholarship Recommendation Self Evaluation*

Sign up for college visits

**SPRING - SUMMER
JUNIOR, PRE-SENIOR YEAR**

**FALL - SPRING
JUNIOR YEAR**

Continue researching *Collages I'm Thinking About*

Continue college visits

Identify *Colleges I'm Applying To* and create an organizational system w/deadlines

Begin completing college applications (including The Common App)
on or about August 1

APPLICATION TIMELINE

Take SAT/ACT again if unhappy with scores

Continue college visits if necessary

Ask teachers for recommendations (1st few weeks of school or sooner)

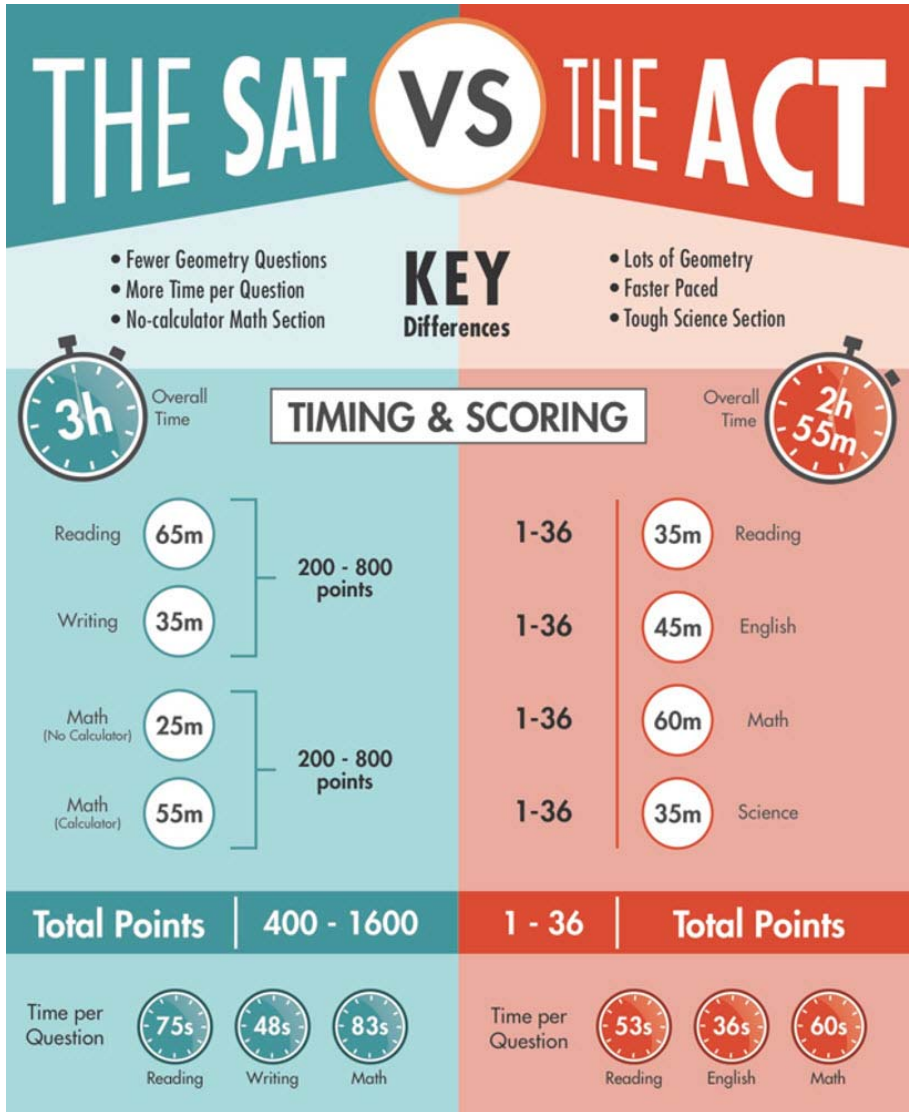
Submit Transcript Request form and list of “Colleges I’m Applying to”

Finalize and submit college applications (before Early Action deadlines)



**FALL
SENIOR YEAR**

TEST OPTIONS





TEST OPTIONS

CONTINUED.....

ACCUPLACER

- Tests knowledge of HS *content*. Arithmetic, College-Level Math, Elementary Algebra (75), Reading Comprehension (79), and Sentence Skills (90)
 - Multiple choice
 - Determines course *placement*, NOT admission
 - *Untimed*
- ⊙ Students should take at least one test before the end of junior year.
 - ⊙ Fee waivers are available - see Mrs. Leaman in the Career Center
 - ⊙ Prep classes offered at Einstein – there are also free online tools



**TEST
RESOURCES**

COLLEGEBOARD.ORG (SAT)

ACT.ORG (ACT)

PRINCETONREVIEW.COM

PETERSONS.COM

KHANACADEMY.ORG

WHAT IS NAVIANCE?

- ⊙ **A PROGRAM DESIGNED TO HELP STUDENTS AND PARENTS WITH THE COLLEGE AND CAREER SEARCH PROCESS.**
 - ⊙ **[HTTPS://STUDENT.NAVIANCE.COM/EINSTEIN](https://student.naviance.com/einstein)
(STUDENT NAVIANCE LOG-IN)**
- ⊙ **USER NAME AND PASSWORD = STUDENT ID #**
- ⊙ **PARENTS – CONTACT YOUR STUDENTS COUNSELOR TO HAVE YOUR ACCOUNT ACTIVATED**

FACTORS IN CHOOSING A COLLEGE



WHAT MATTERS??

Location

Major

Accreditation by major

Size

Cost



WHAT MATTERS??

Graduation rate

Activities/sports

Diversity

Campus Life

Disability Services



WHAT MATTERS??

Facilities

Housing

Retention rate

Alumni job placement

HOW MANY COLLEGES SHOULD I APPLY TO?

There is no magic number, however 5-9 schools are usually enough. This number should be a combination of reach (3), match (3), safe (2), and in-state (1) schools.



REACH SCHOOL

A college you have a chance of getting into, but your test scores and/or high school grades are lower than the scores on the school's profile



SAFE SCHOOL

A college you will *almost certainly* get into because your test scores and/or high school grades are well above the average when looking at the school's profile.



MATCH SCHOOL

A college you are *pretty likely* to get into because your test scores and /or high school grades fall right into the middle range when looking at the schools profile



IN-STATE SCHOOL

A college located in Maryland where students receive in-state tuition, and financial aide opportunities.



HELPFUL WEBSITES

- ⦿ [HTTPS://STUDENT.NAVIANCE.COM/EINSTEIN](https://student.naviance.com/einstein)
(STUDENT NAVIANCE LOG-IN)
- ⦿ [COLLEGEBOARD.COM](https://collegeboard.com)
- ⦿ [ACTSTUDENT.ORG](https://actstudent.org)
- ⦿ [COMMONAPP.ORG](https://commonapp.org)
- ⦿ [FINAID.ORG](https://finaid.org)
- ⦿ [FASTWEB.COM](https://fastweb.com)

To DO

Prepare for and take SAT and/or ACT

Answer 8 questions in the *Self Evaluation Survey* on Naviance

Conduct *Super Math College Search* and add 5-10 *Collages I'm Thinking About* in Naviance

Attend MCPS College Fair (April 1-2, 2019)

College Visits



**PRIOR TO THE END
OF JUNIOR YEAR**

To DO

Continue researching colleges and get organized

Continue to visit colleges / schedule campus tours

Begin college applications (including commonapp.org) which typically opens August 1st

Write personal essays for applications



**SUMMER BETWEEN
JUNIOR/SENIOR
YEAR**



**IMPORTANT
DATES**

⦿ **SPRING BREAK APRIL 17-22, 2019**

⦿ **COLLEGE FAIR APRIL 1-2, 2019**

⦿ **SAT/ACT TEST DATES SEE HANDOUT**



\$5 Each

Proceeds benefit the Class of 2019

On Sale on Main street during December

Questions? Gregory_J_Varner@mcpsmd.org, or room 216

INSIGHT FROM ADMISSIONS COUNSELORS



APPLICATIONS

- ⊙ # of applications and quality of pool has increased.
- ⊙ Student profile dictated by applicant pool.
- ⊙ Institutional needs have changed.



OTHER

- ⊙ Over-focused on athlete recruitment.
- ⊙ Heightened anxiety.
- ⊙ Use the admissions counselor for help. Don't be afraid to ask.



STUDENT PANEL